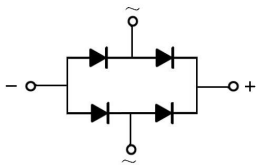


/ Descriptions

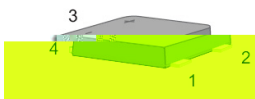
/ Features

/ Applications

/ Equivalent Circuit

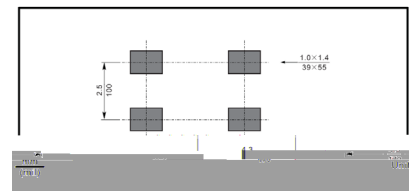


/ Pinning



PIN	DESCRIPTION
1	Input Pin (~)
2	Input Pin (~)
3	Output Anode (+)
4	Output Cathode (-)

The recommended mounting pad size



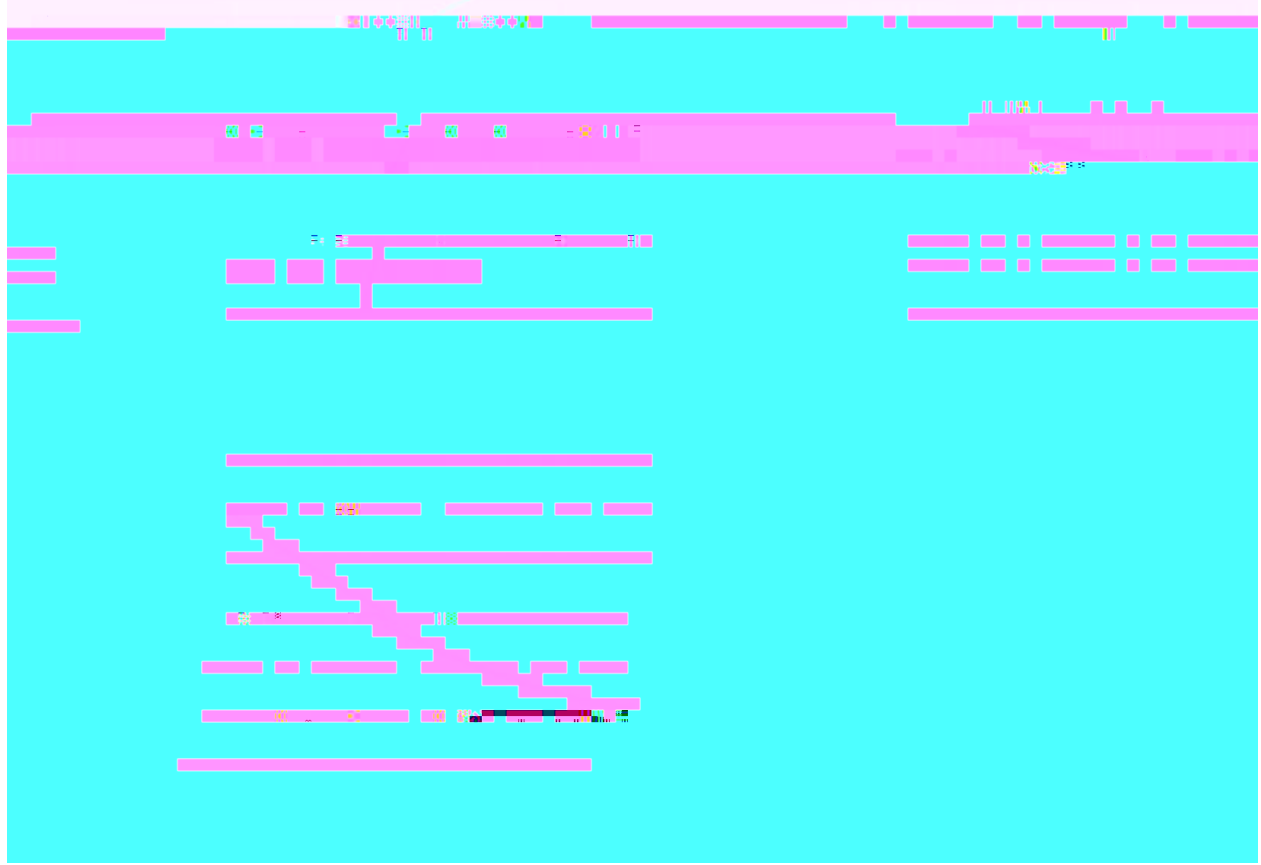
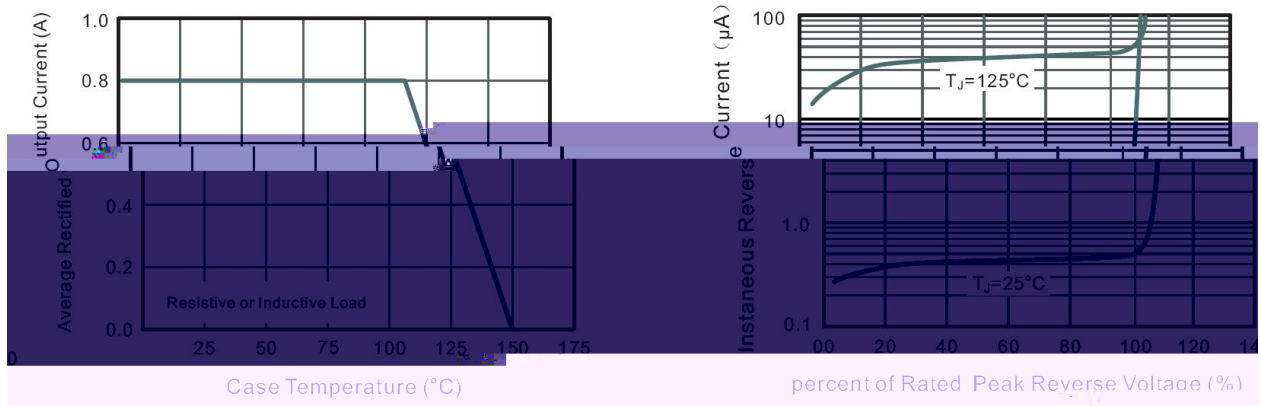
/ Marking

/ Absolute Maximum Ratings(Ta=25)

/ Electrical Characteristics(Ta=25)

				μ

/ Electrical Characteristic Curve

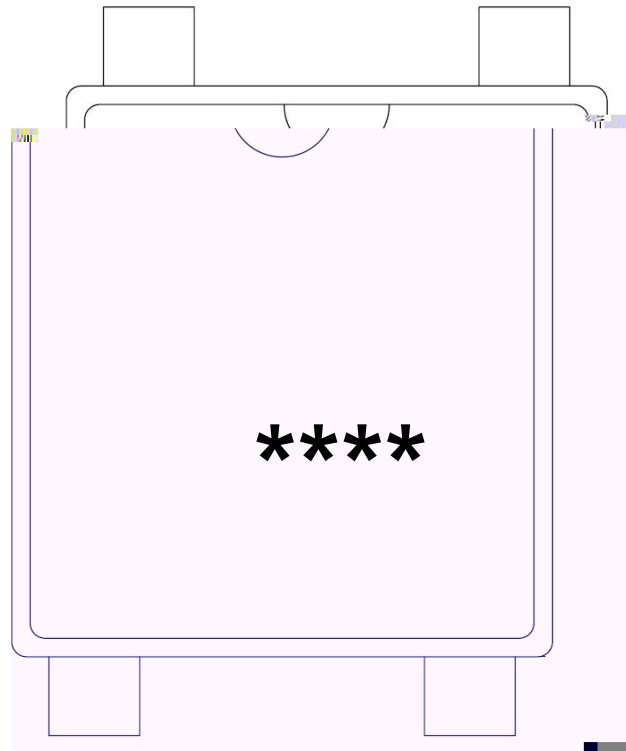


/ Package Dimensions

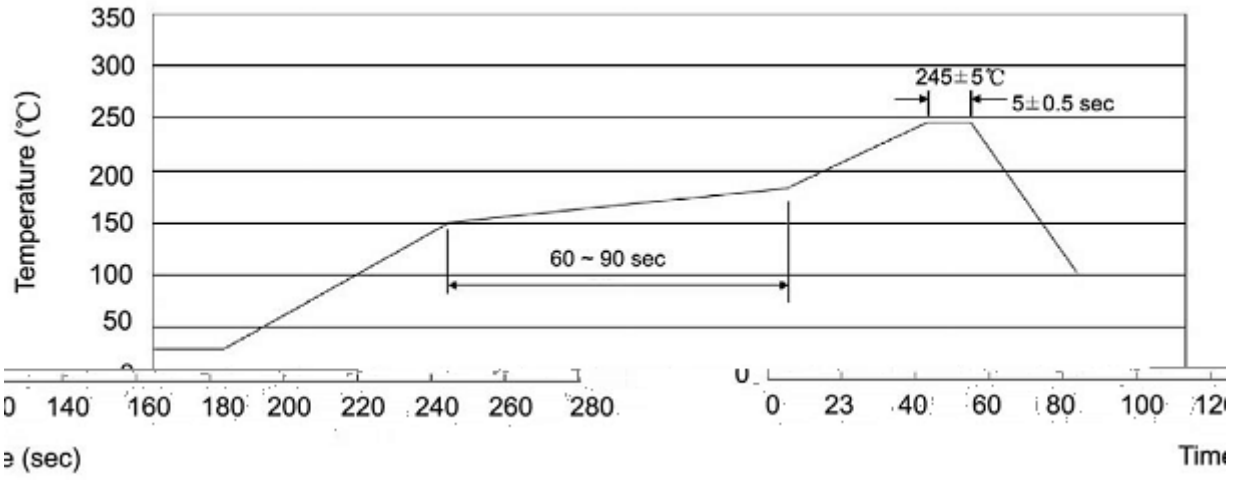


UM1B

/ Marking Instructions



() /



/ Resistance to Soldering Heat Test Conditions

/ Packaging SPEC.

	Units/Outer Box	Reel	Inner Box	Outer Box