

/ Descriptions

Surface Mount Schottky Barrier Rectifiers, Reverse Voltage 20 to 200V, Forward Current: 3.0A ,SMB package.

/ Features

Glass Passivated Chip Junction, Lead free in comply with EU RoHS 2011/65/EU directives, For surface mounted applications. HF product.

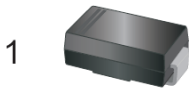
/ Applications

General purpose.

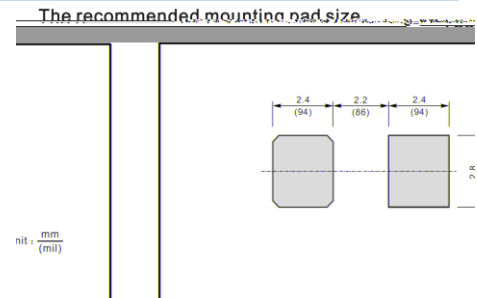
/ Equivalent Circuit



/ Pinning



PIN	DESCRIPTION
1	Cathode
2	Anode



/ Marking

See Marking Instructions.

SS32B~SS320B

Rev. B Dec.-2023

/ Electrical Characteristic Curve

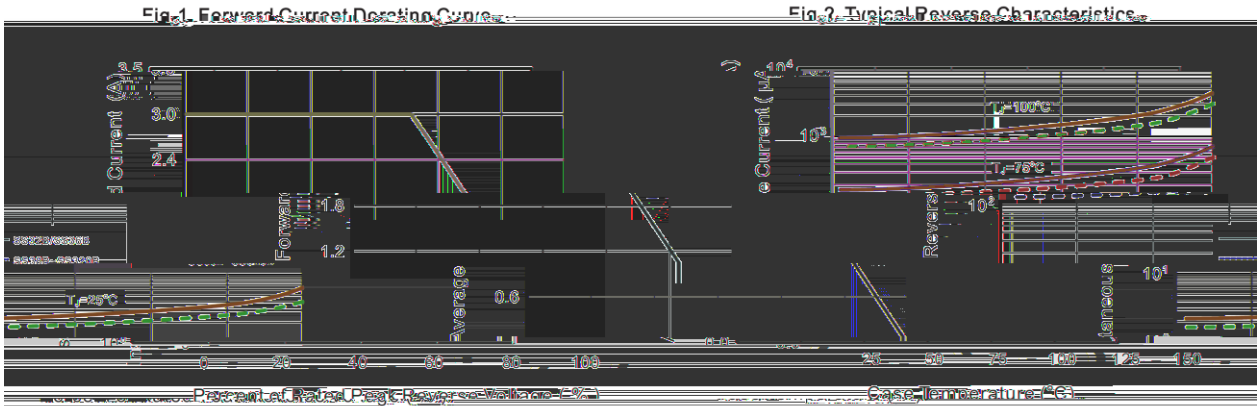
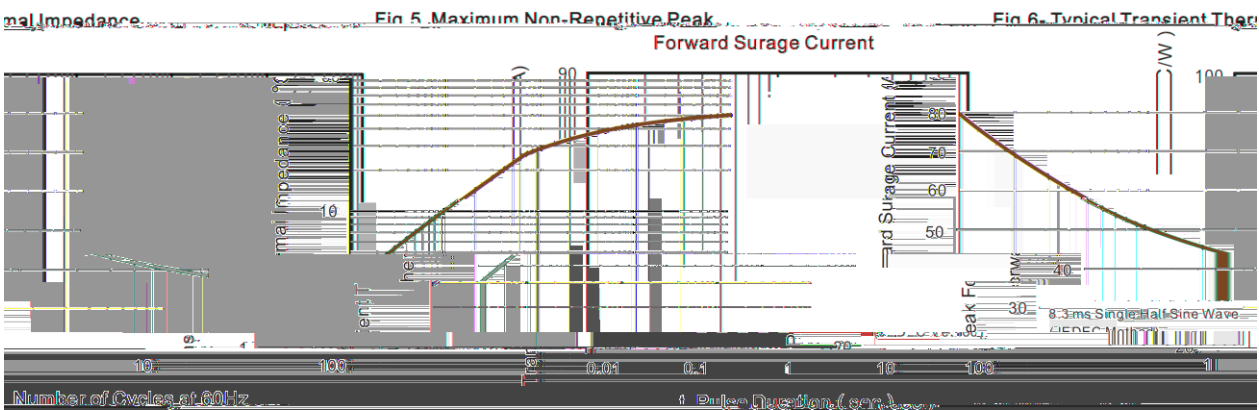
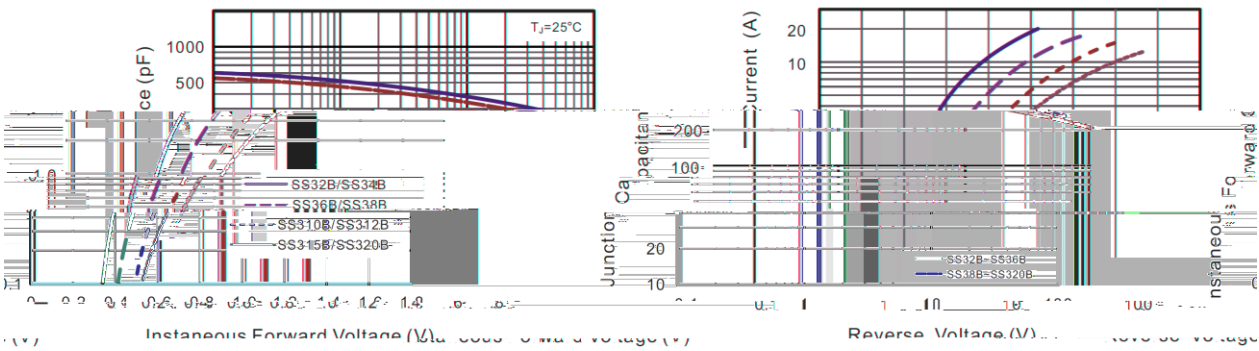


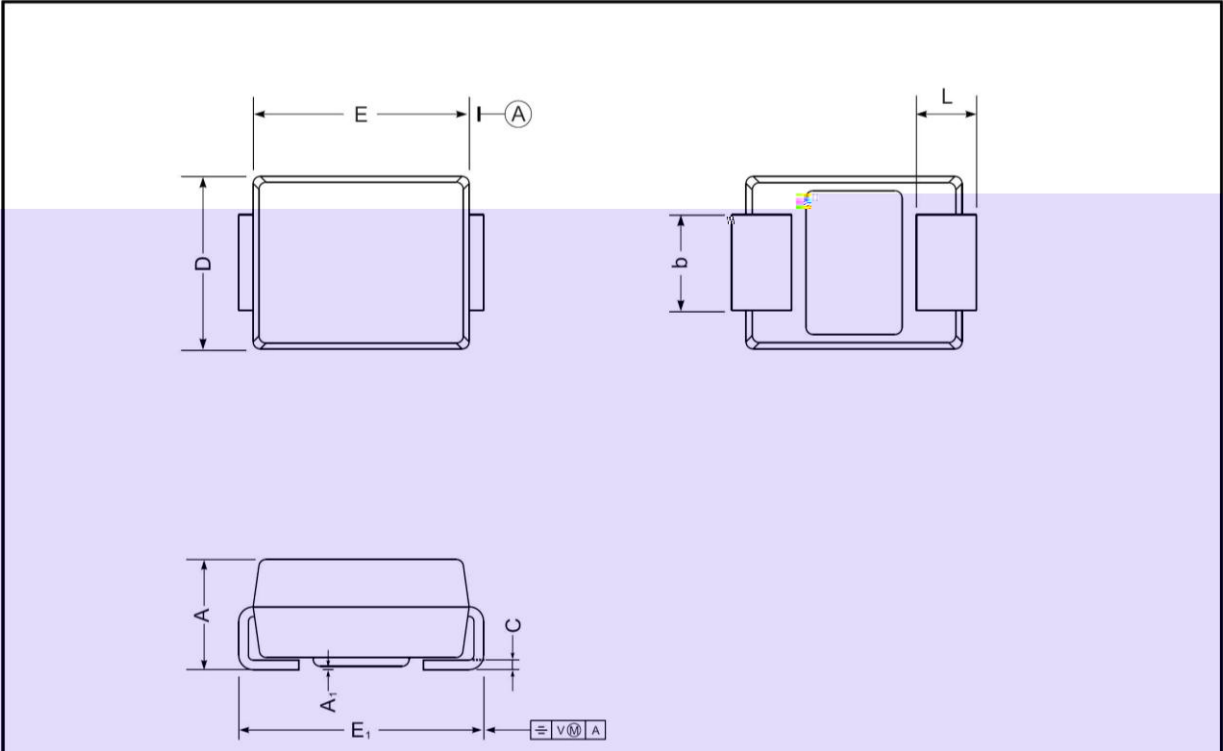
Fig. 4 Typical Junction Capacitance

Fig. 3 Typical Forward Characteristic



/ Package Dimensions

SMB



SMB mechanical data

UNIT		A	E	D	E ₁	A ₁	L	C	b
mm	max	2.44	4.70	3.94	5.59	0.20	1.5	0.305	2.2
	min	2.13	4.06	3.3	5.08	0.05	0.8	0.152	1.9
mil	max	96	185	155	220	7.9	59	12	87

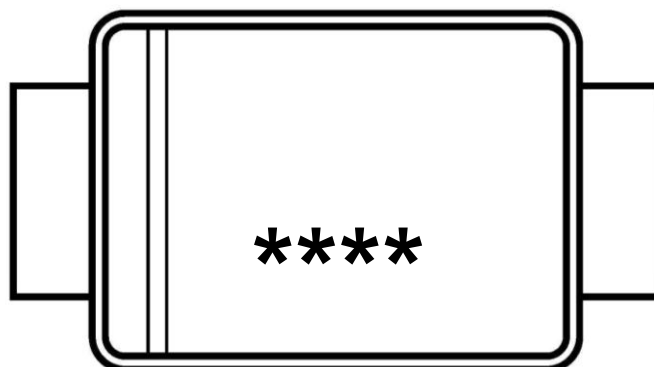
0.00	0.01	0.02	0.03	0.04	0.05	0.06	0.07	0.08	0.09
------	------	------	------	------	------	------	------	------	------

/ Marking Instructions

Marking

Type Number	Marking Reading
SS32B	SS32
SS34B	SS34
SS36B	SS36
SS38B	SS38
SS310B	SS310
SS312B	SS312
SS315B	SS315
SS320B	SS320

/ Marking Instructions

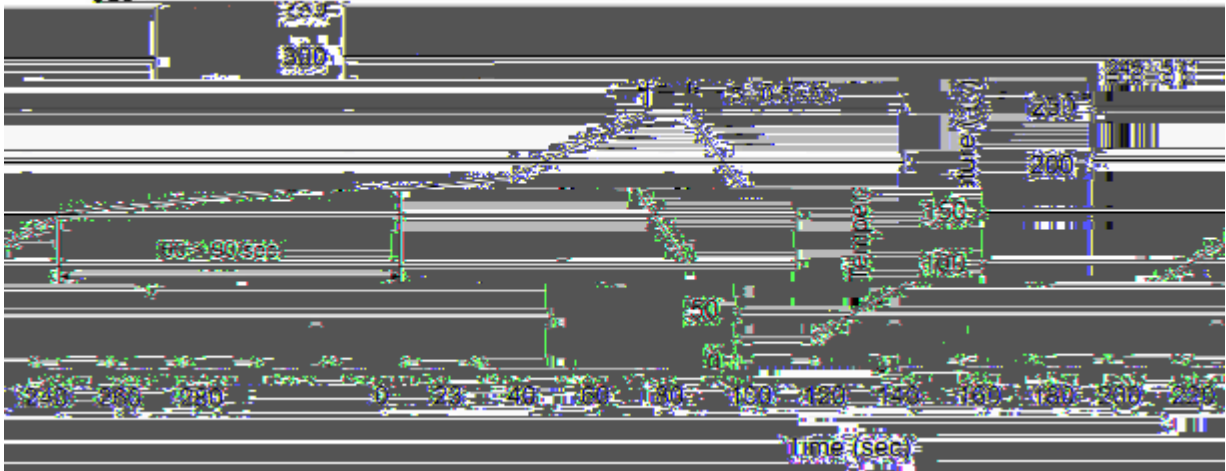


Note:

Product Type Code

Lot No. Code The 1st means:YM Code The last 3 means:little Lot No
Code

() /



Note:

- | | | | | | |
|---|-----|-----|----|----------|---|
| 1 | 25 | 150 | 60 | 90sec; | 1.Preheating:25~150 , Time:60~90sec. |
| 2 | 245 | 5 | 5 | 0.5sec; | 2.Peak Temp.:245 5 , Duration:5 0.5sec. |
| 3 | | | 2 | 10 /sec. | 3. Cooling Speed: 2~10 /sec. |

/ Resistance to Soldering Heat Test Conditions

260 5 10 1 sec. Temp.:260 5 Time:10 1 sec

/ Packaging SPEC.

/ REEL

Package Type 封装形式	Units 包装数量					Dimension 包装尺寸 (unit: mm ³)		
	Units/Reel 只/卷盘	Reels/Inner Box 卷盘/盒	Units/Inner Box 只/盒	Inner Boxes/Outer Box 盒/箱	Units/Outer Box 只/箱	Reel	Inner Box 盒	Outer Box 箱
SMB	3,000	2	6,000	7	42,000	13 ×12	336X336X40	380X335X366

/ Notices