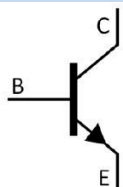


/ Descriptions

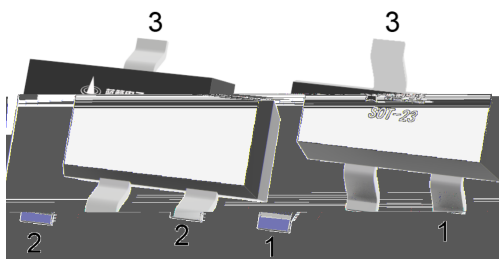
/ Features

/ Applications

/ Equivalent Circuit



/ Pinning



/ hFE Classifications & Marking

	~	~	~

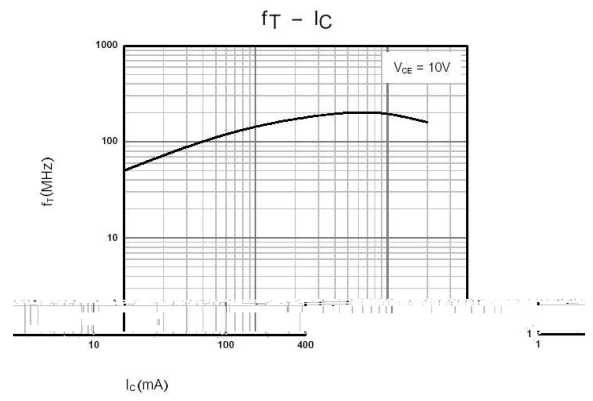
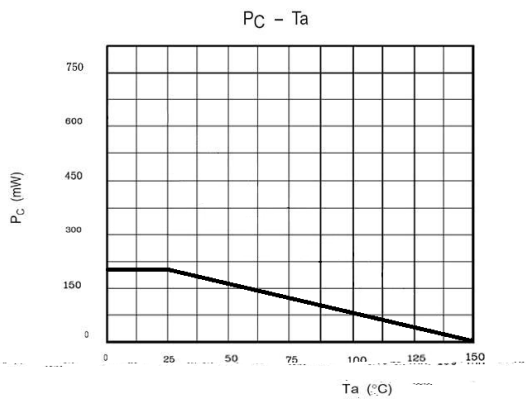
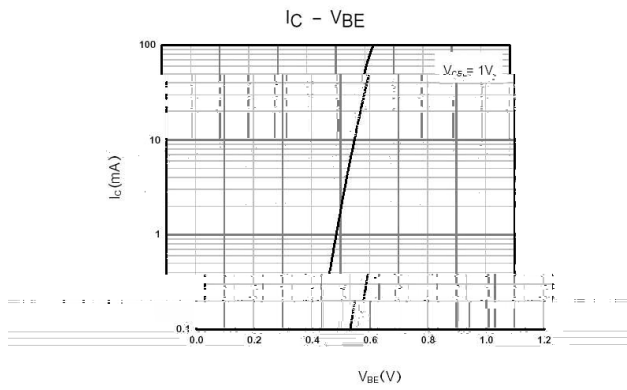
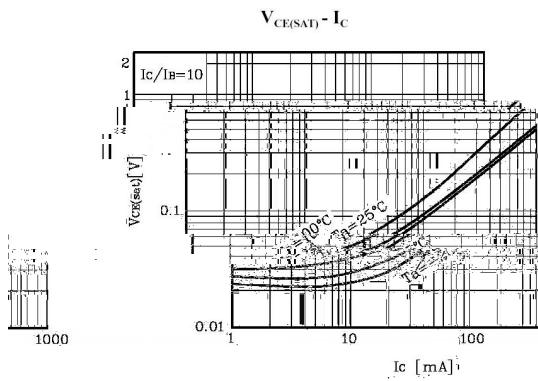
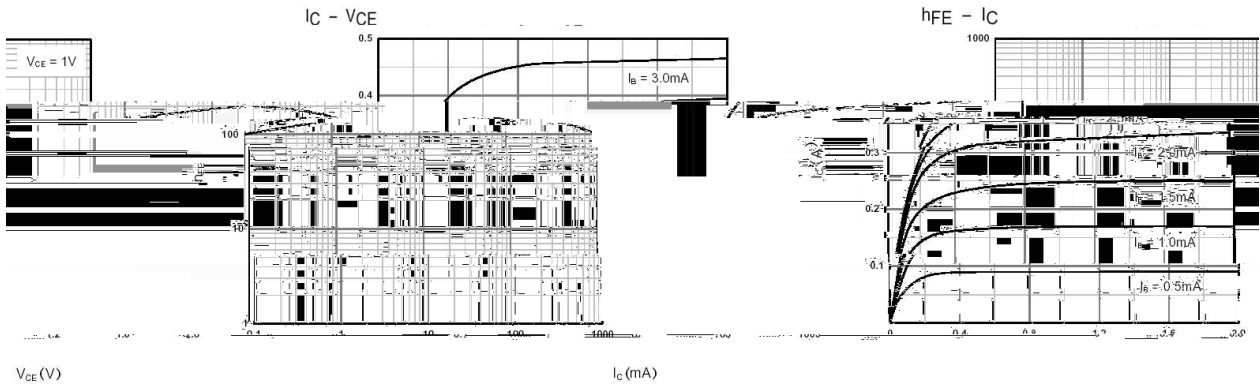
/ Absolute Maximum Ratings(Ta=25)

		~	

/ Electrical Characteristics(Ta=25)

						1
						1

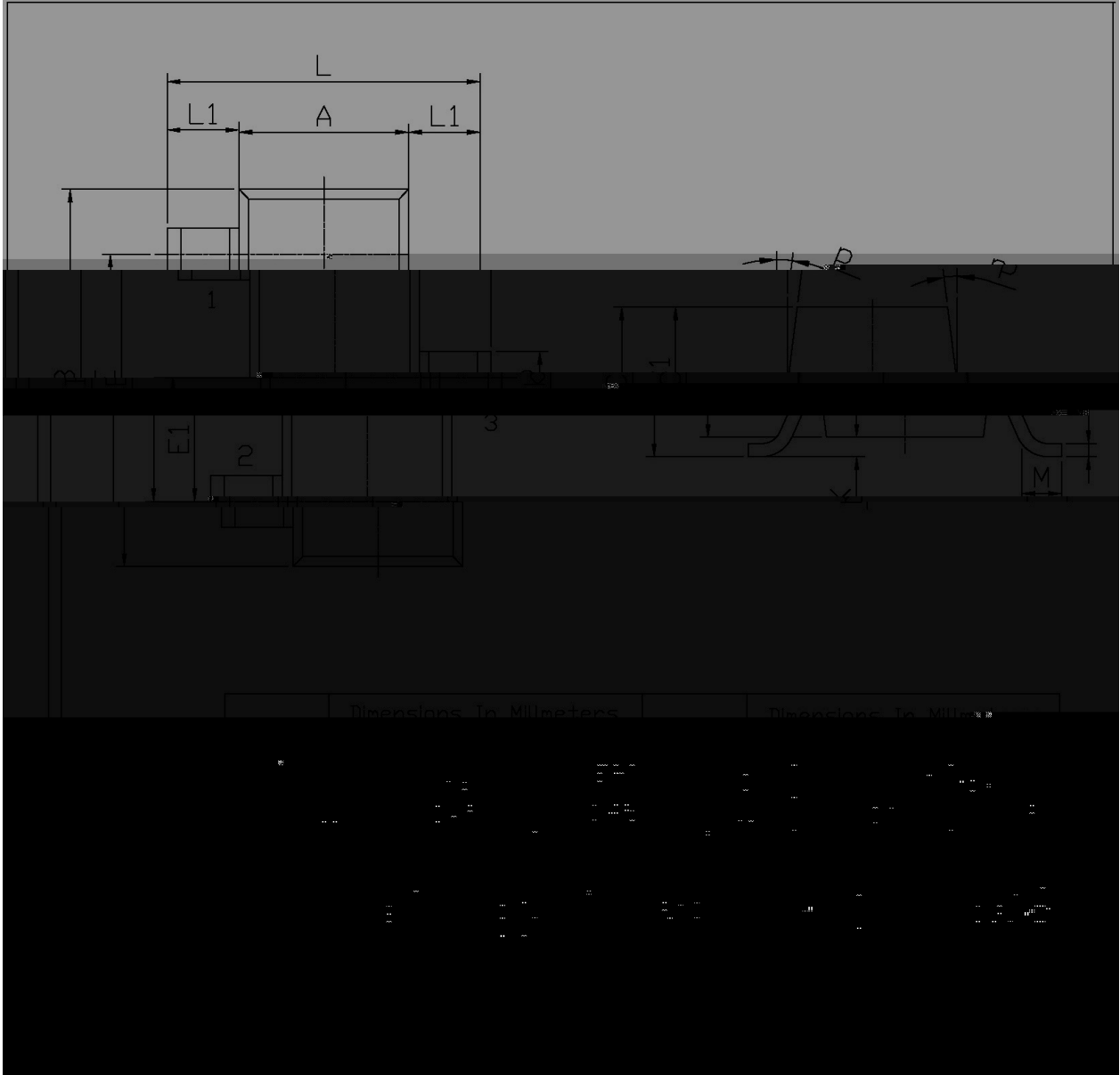
/ Electrical Characteristic Curve



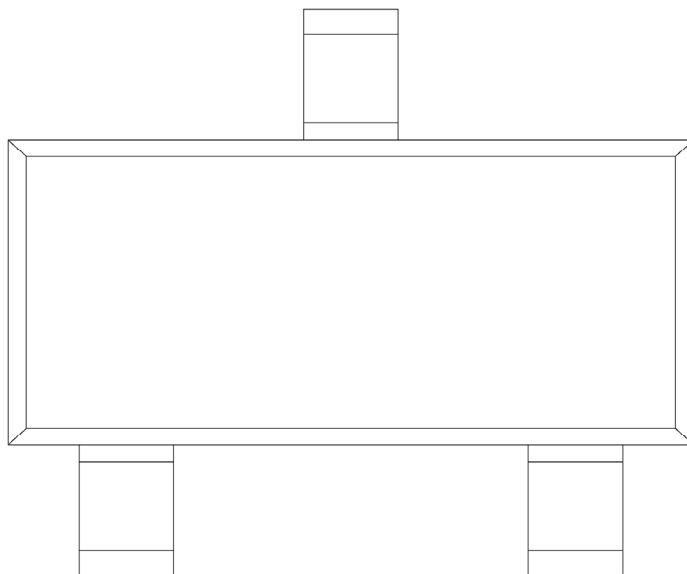
/ Package Dimensions

SOT-23

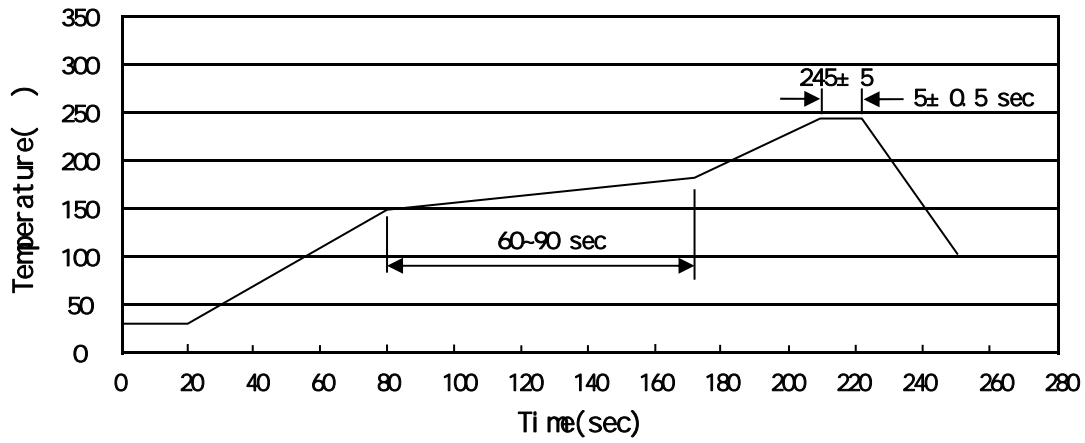
单位: mm



/ Marking Instructions



() / Temperature Profile for IR Reflow Soldering(Pb-Free)



/ Resistance to Soldering Heat Test Conditions

/ Packaging SPEC.

	Units/Reel	Reels/Inner Box	Units/Inner Box	Inner Boxes/Outer Box	Units/Outer Box	Reel	Inner Box	Outer Box
	/	/	/	/	/			

/ Notices