

Rev.B Jun.-2022

50V~1000V

2.0A

DO-15

Surface Mount General Purpose Silicon Rectifiers, Reverse Voltage: 50 to1000V, Forward Current: 2.0A, DO-15 axial package.

Plated axial lead, Low forward voltage drop, Low leakage current, High forward surge capability.

General purpose.



PIN1: Cathode PIN2:Anode

See Marking Instructions.



参数 Parameter	符号 Symbol	数值 Rating							单位 Unit
		RL201G	RL202G	RL203G	RL204G	RL205G	RL206G	RL207G	
Maximum Recurrent Peak Reverse Voltage	V_{RRM}	50	100	200	400	600	800	1000	V
Maximum RMS Voltage	V_{RMS}	35	70	140	280	420	560	700	V
Maximum DC Blocking Voltage	V_{DC}	50	100	200	400	600	800	1000	V
Maximum Average Forward Rectified Current at $T_a=65^{\circ}C$	$I_{F(AV)}$	2.0							A
Peak Forward Surge Current 8.3 ms Single Half Sine Wave Superimposed on Rated Load (JEDEC Method)	I_{FSM}	50							A
Typical Junction Capacitance ¹⁾	C_j	20							pF
Typical Thermal Resistance ²⁾	R_{JA}	40							$^{\circ}C/W$
Operating and Storage Temperature Range	T_j, T_{stg}	-55~+150							$^{\circ}C$

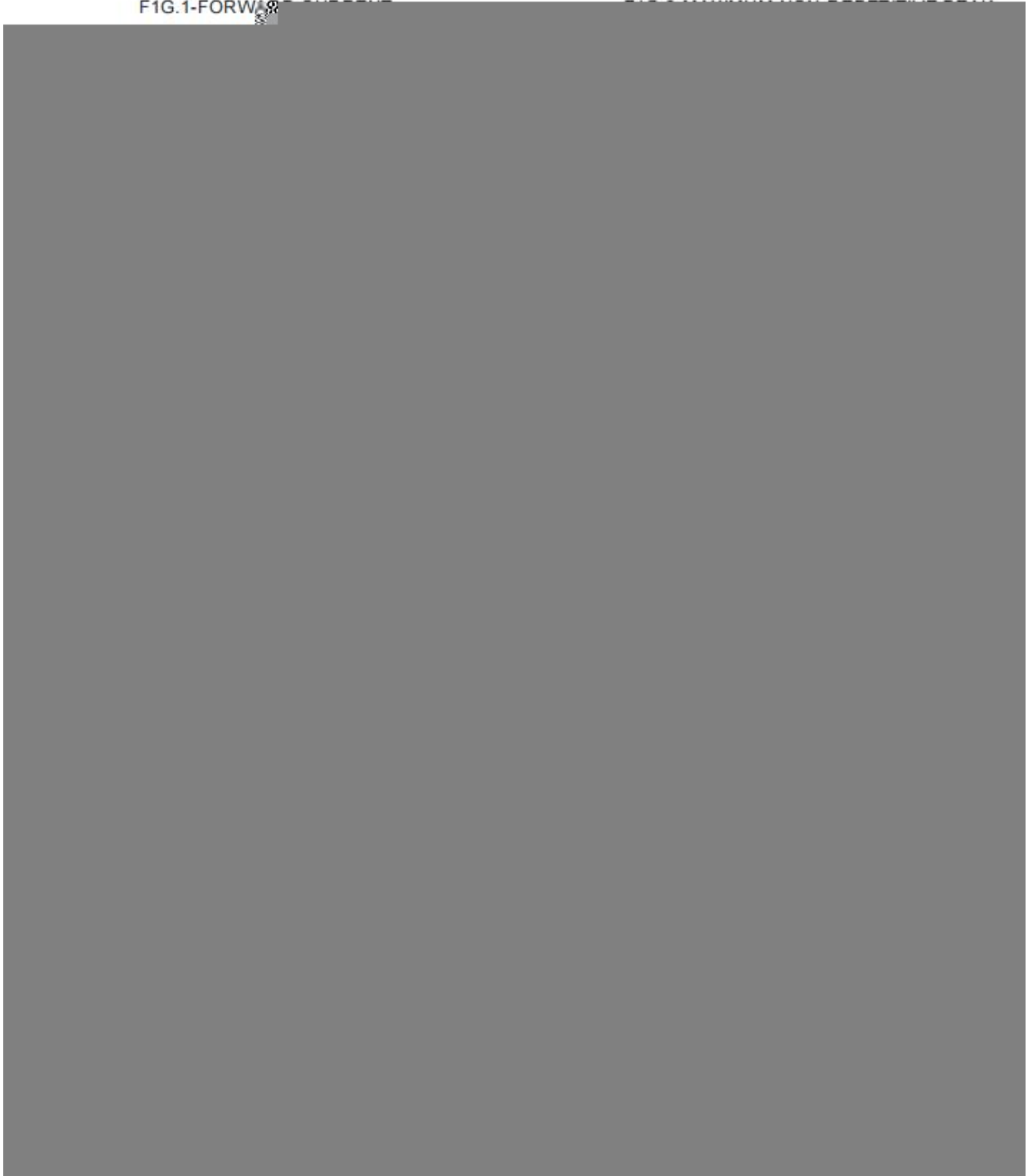
Note:

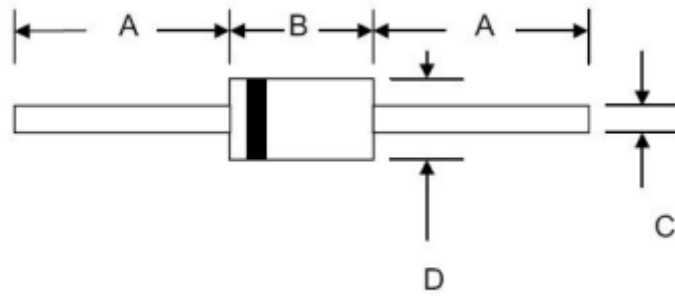
- 1) Measured at 1.0MHz and applied reverse voltage of 4.0 Volts.
- 2) Thermal Resistance from Junction to Ambient at. 1.8x1.8mm² copper pad areas.

参数 Parameter	符号 Symbol	测试条件 Test Conditions	数值 Rating						单位 Unit
			RL201G	RL202G	RL203G	RL204G	RL205G	RL206G	
Maximum Instantaneous Forward Voltage	V_F	$I_F=2.0A$	1.1						V
Maximum DC Reverse Current at Maximum DC Blocking Voltage	I_R	$T_a=25^{\circ}C$	5.0						μA
		$T_a=125^{\circ}C$	100						μA

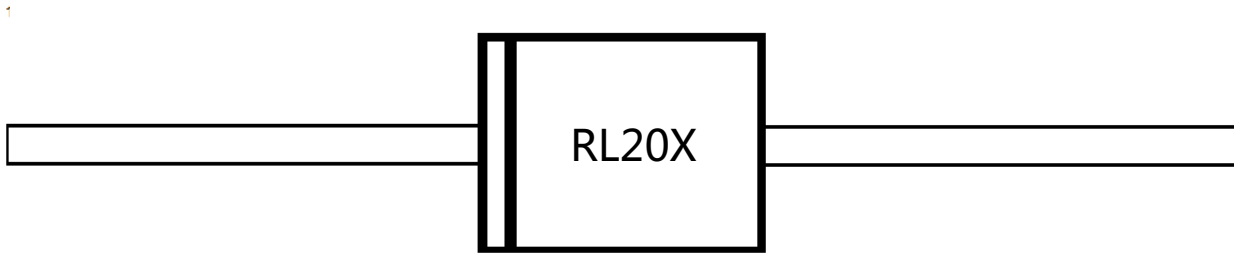


FIG.1-FORWARD





	Min.	Max.	Min.	Max.
A	25.4		1.0	
B	5.8	7.6	0.230	0.300
C	0.68	0.78	0.027	0.031
D	2.6	3.6	0.104	0.140



说明：

RL20X： 为型号代码

Note:

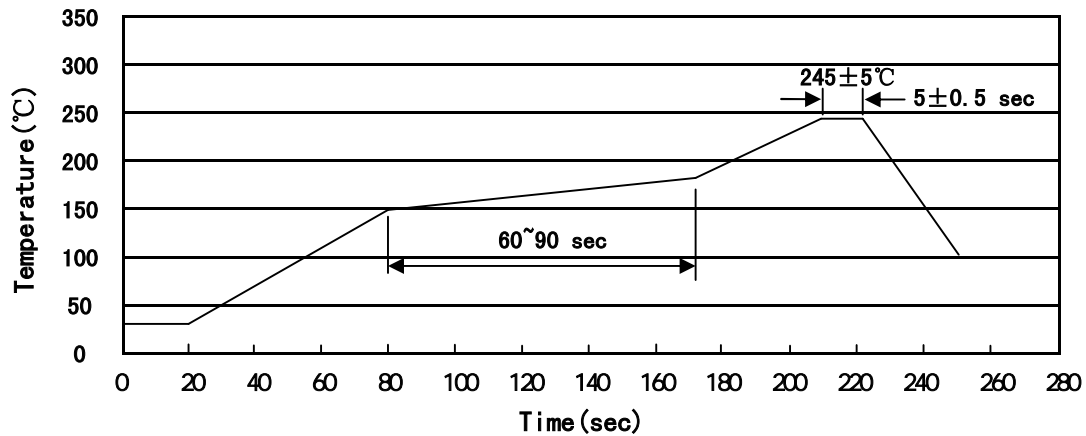
RL20X： Product Type Code

Marking

Type number	Marking code
RL201G	RL201
RL202G	RL202
RL203G	RL203
RL204G	RL204
RL205G	RL205
RL206G	RL206
RL207G	RL207



Temperature Profile for IR Reflow Soldering(Pb-Free)



Note:

- | | | | | | |
|---|-------|-----|----|-----------|--|
| 1 | 150 | 180 | 60 | 90sec; | 1.Preheating:150~180°C, Time:60~90sec. |
| 2 | 245±5 | | | 5±0.5sec; | 2.Peak Temp.:245±5°C, Duration:5±0.5sec. |
| 3 | | | 2 | 10°C/sec. | 3. Cooling Speed: 2~10°C/sec. |

260±5°C 10±1 sec. Temp.:260±5°C Time:10±1 sec

/ REEL

Package Type	Units					Dimension (unit mm ³)		
	Units/Reel /	Reels/Inner Box /	Units/Inner Box /	Inner Boxes/Outer Box /	Units/Outer Box /	Reel	Inner Box	Outer Box
DO-15	3000	1	3000	10	30000	7" x6	255X75X140	443X215X250