

/ Descriptions

Silicon PNP transistor in a SOT-23 Plastic Package.

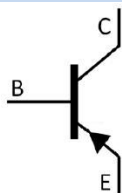
/ Features

Low $V_{CE(sat)}$, high current.

/ Applications

General purpose switching and muting, LCD back-lighting, supply line switching circuits.

/ Equivalent Circuit



/ Pinning



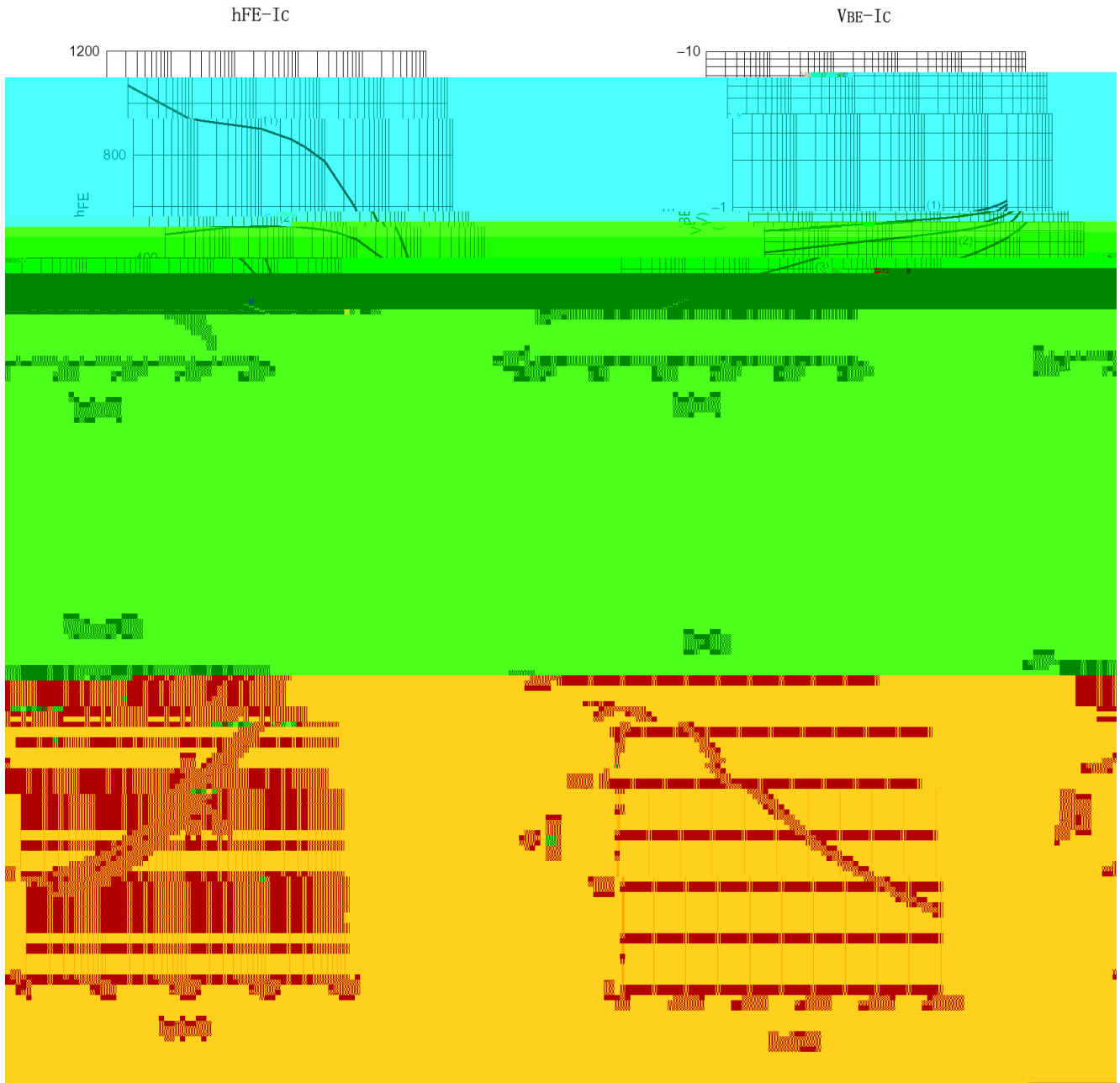
PIN 1 Base PIN 2 Emitter PIN 3 Collector

/ h_{FE} Classifications & Marking

h_{FE} Range	300 800
Marking	HP2H

Parameter	Symbol	Rating	Unit
Collector to Base Voltage	V_{CBO}	-40	V
Collector to Emitter Voltage	V_{CEO}	-40	V
Emitter to Base Voltage	V_{EBO}	-5.0	V
Collector Current	I_C	-1.0	A
peak collector current	I_{CM}	-2.0	A
peak base current	I_{BM}	-1.0	A

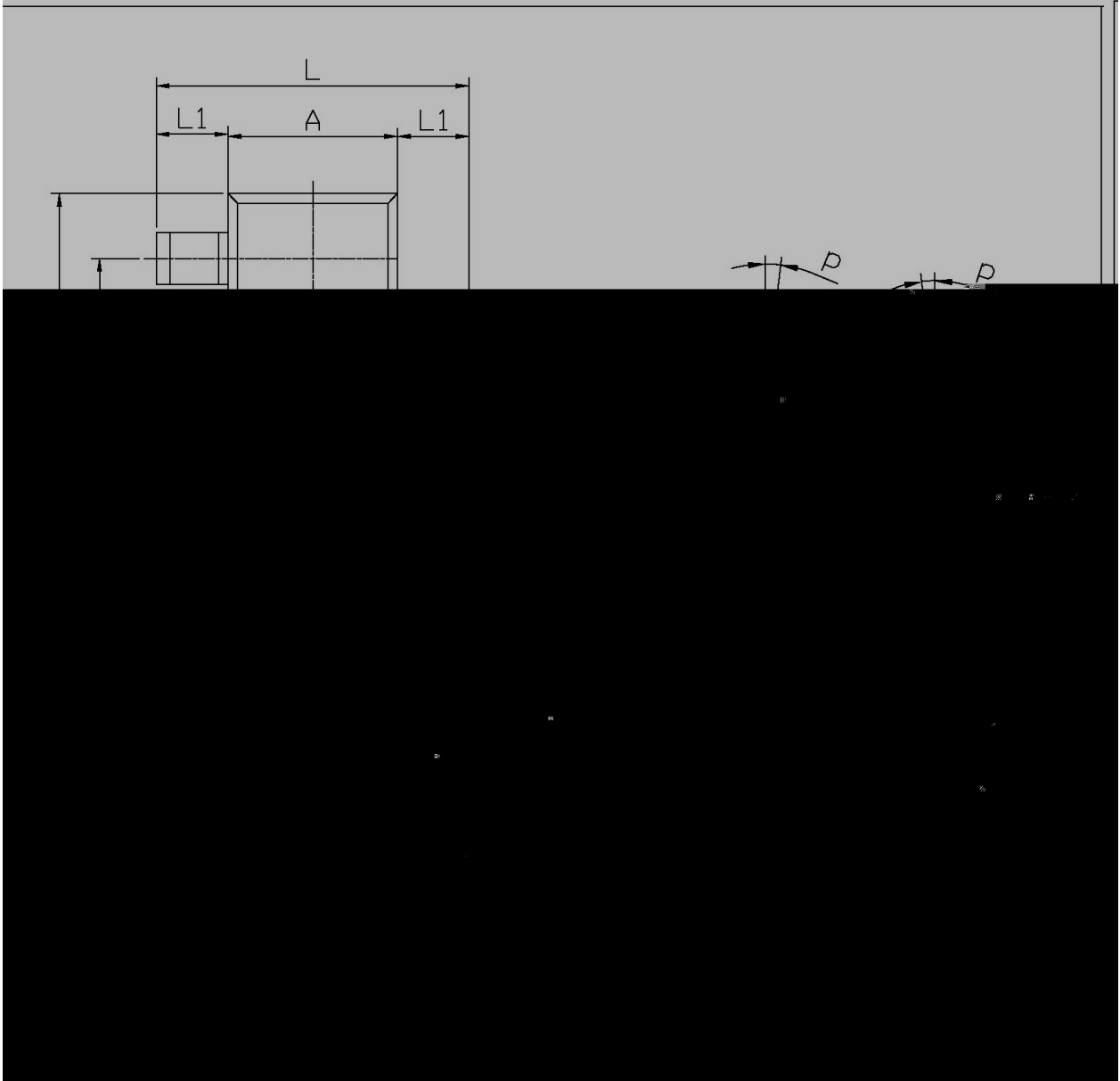
/ Electrical Characteristic Curve



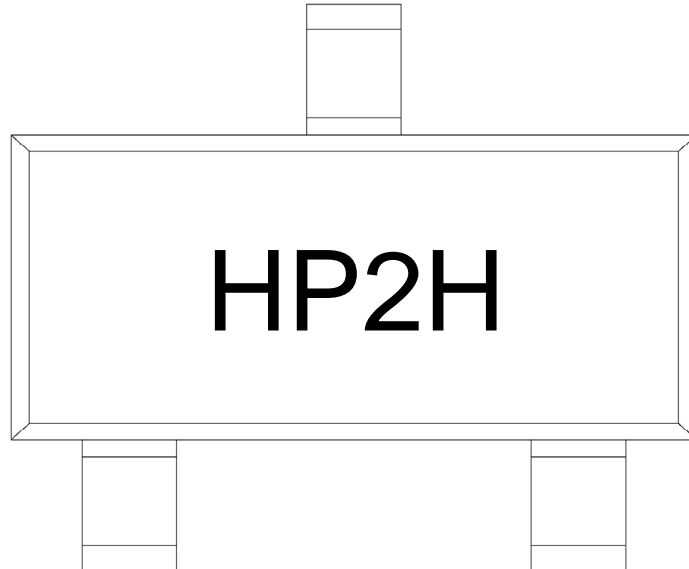
/ Package Dimensions

SOT-23

单位: mm



/ Marking Instructions



P2H

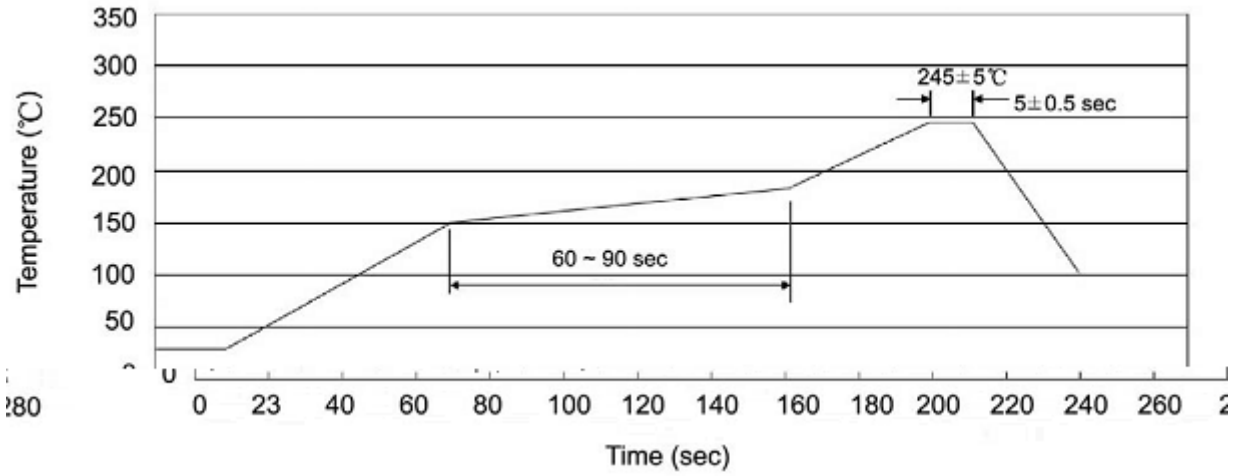
Note:

Company Code

P2H

Product Type

() /



Note:

- 1 25 150 60 90sec; 1.Preheating:25~150 , Time:60~90sec.
- 2 245 5 5 0.5sec; 2.Peak Temp.:245 5 , Duration:5 0.5sec.
- 3 2 10 /sec. 3. Cooling Speed: 2~10 /sec.

/ Resistance to Soldering Heat Test Conditions

260 5 10 1 sec. Temp.:260±5 Time:10±1 sec

/ Packaging SPEC.

/ REEL

Package Type 封装形式	Units 包装数量					Dimension 包装尺寸 (unit: mm ³)		
	Units/Reel 只/卷盘	Reels/Inner Box 卷盘/盒	Units/Inner Box 只/盒	Inner Boxes/Outer Box 盒/箱	Units/Outer Box 只/箱	Reel	Inner Box 盒	Outer Box 箱
SOT-23	3,000	10	30,000	6	180,000	7 ×8	180×120×180	390×385×205

/ Notices