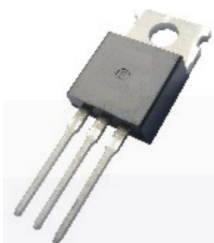


# MUR1220CT

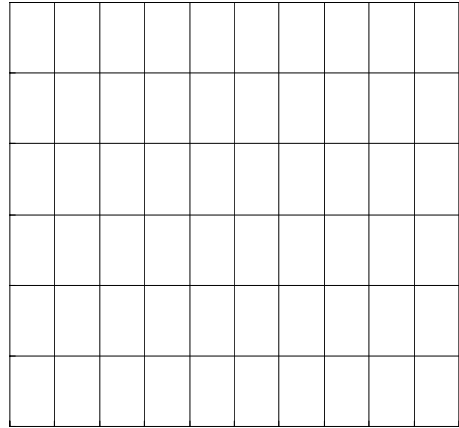
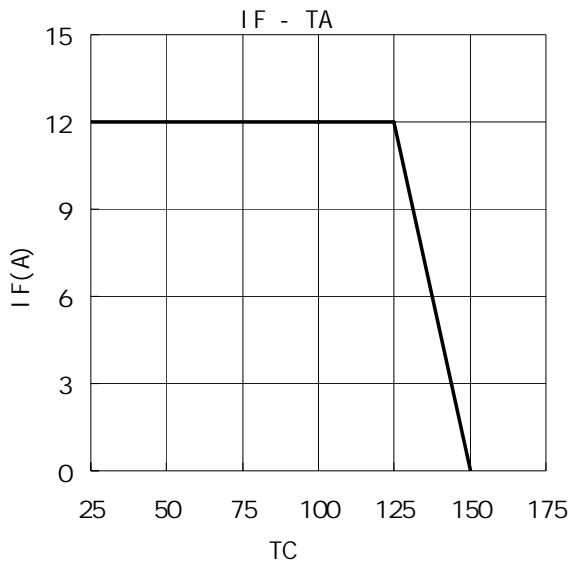
KF \$))'



## / $h_{FE}$ Classifications & Marking

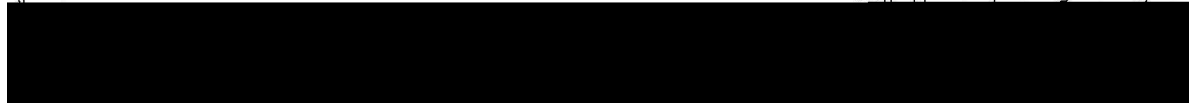
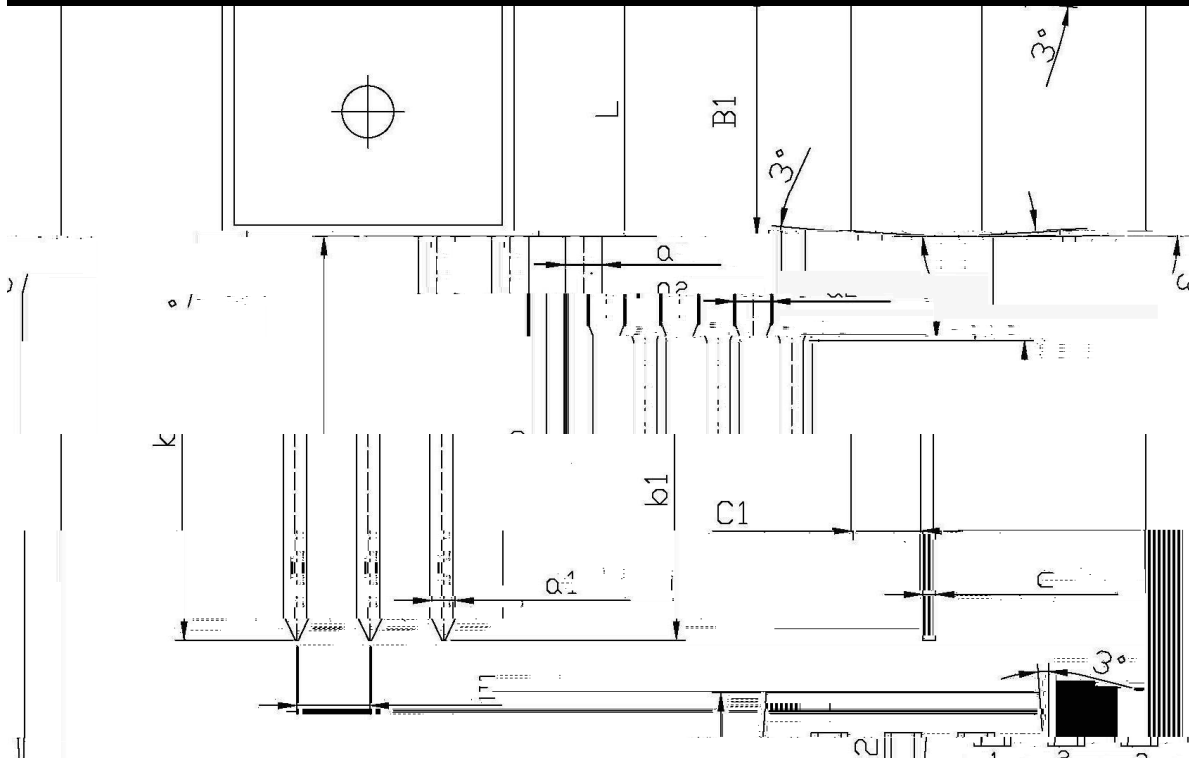
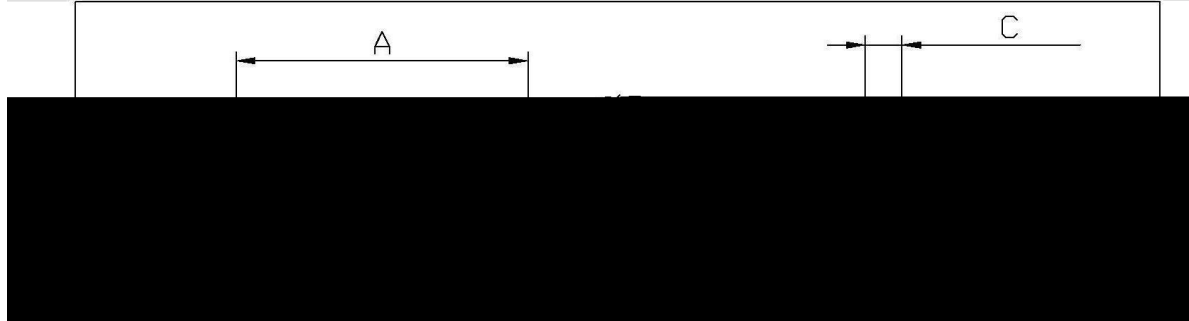


/ Electrical Characteristic Curve



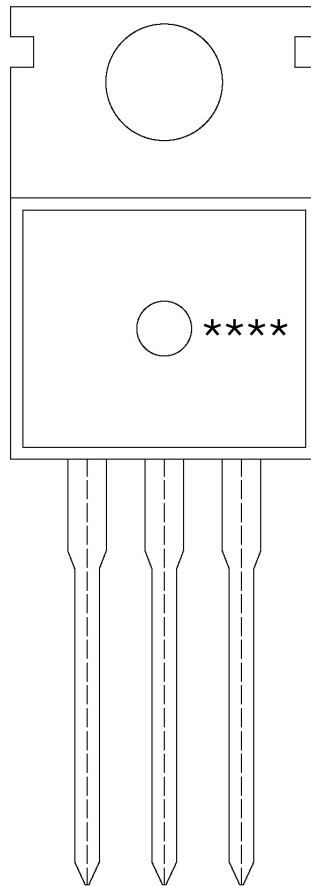
/ Package Dimensions

TO-220 单位: mm



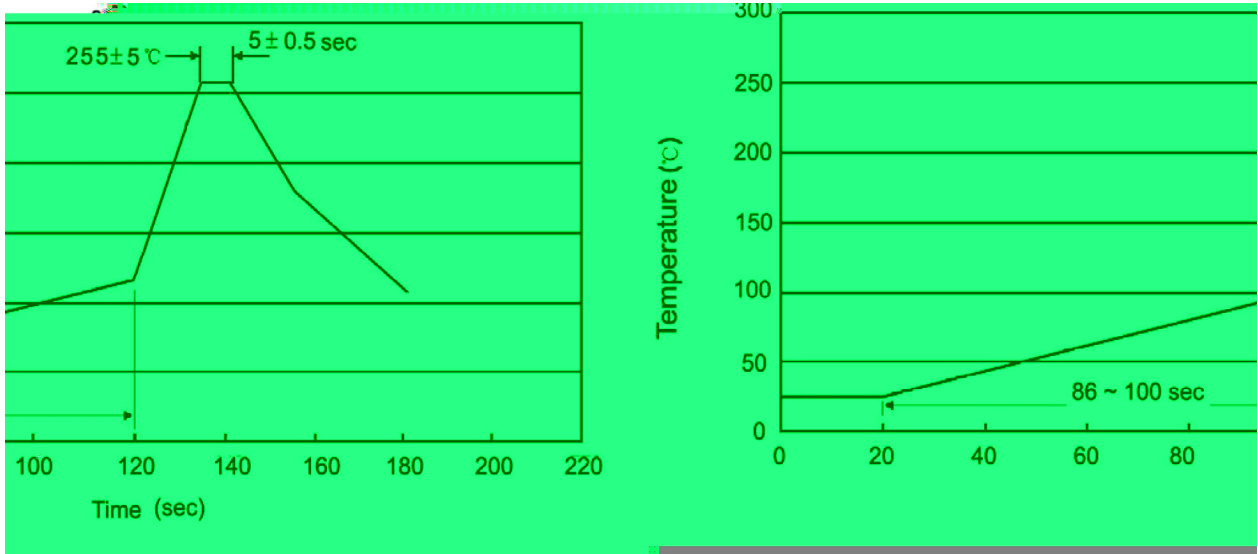
Symbol	Dimensions in milimeters		Symbol	Dimensions in millimeters	
	Min	Max		Min	Max
$\Delta$	9.8	10.2	C	1.2	1.4
R	3.56	3.64	B	6.3	6.7
B1	9.0	9.4		15.7	16.1
C1	2.2	2.6		12.6	13.6
a	0.9	1.0		10.4	10.6
C	0.4	0.6	a	1.22	1.32
				1.25	1.45

/ Marking Instructions



91  
DLI ( )  
: K1  
!!!!

( ) / Temperature Profile for Dip Soldering(Pb-Free)



... ..

/ Resistance to Soldering Heat Test Conditions

... ..

/ Packaging SPEC.

						Bag	Inner Box	Outer Box
	Units/Bag	Bags/Inner Box	Units/Inner Box	Inner Boxes/Outer Box	Units/Outer Box			
TO-220/F	200	10	2,000	5	10,000	135×190	237×172×102	560×245×195

						Tube	Inner Box	Outer Box
	Units/Tube	Tubes/Inner Box	Units/Inner Box	Inner Boxes/Outer Box	Units/Outer Box			
TO-220/F	50	20	1,000	5	5,000	532×31.4×5.5	555×164×50	575×290×180

/ Notices