

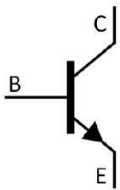
Rev.E May.-2016

TO-263 NPN Silicon NPN transistor in a TO-263 Plastic Package.

- - MJE15037B

High DC current gain, High V_{CE0} , High f_T . Complementary pair with MJE15037B.

Designed for us as high-frequency drivers in audio amplifiers.



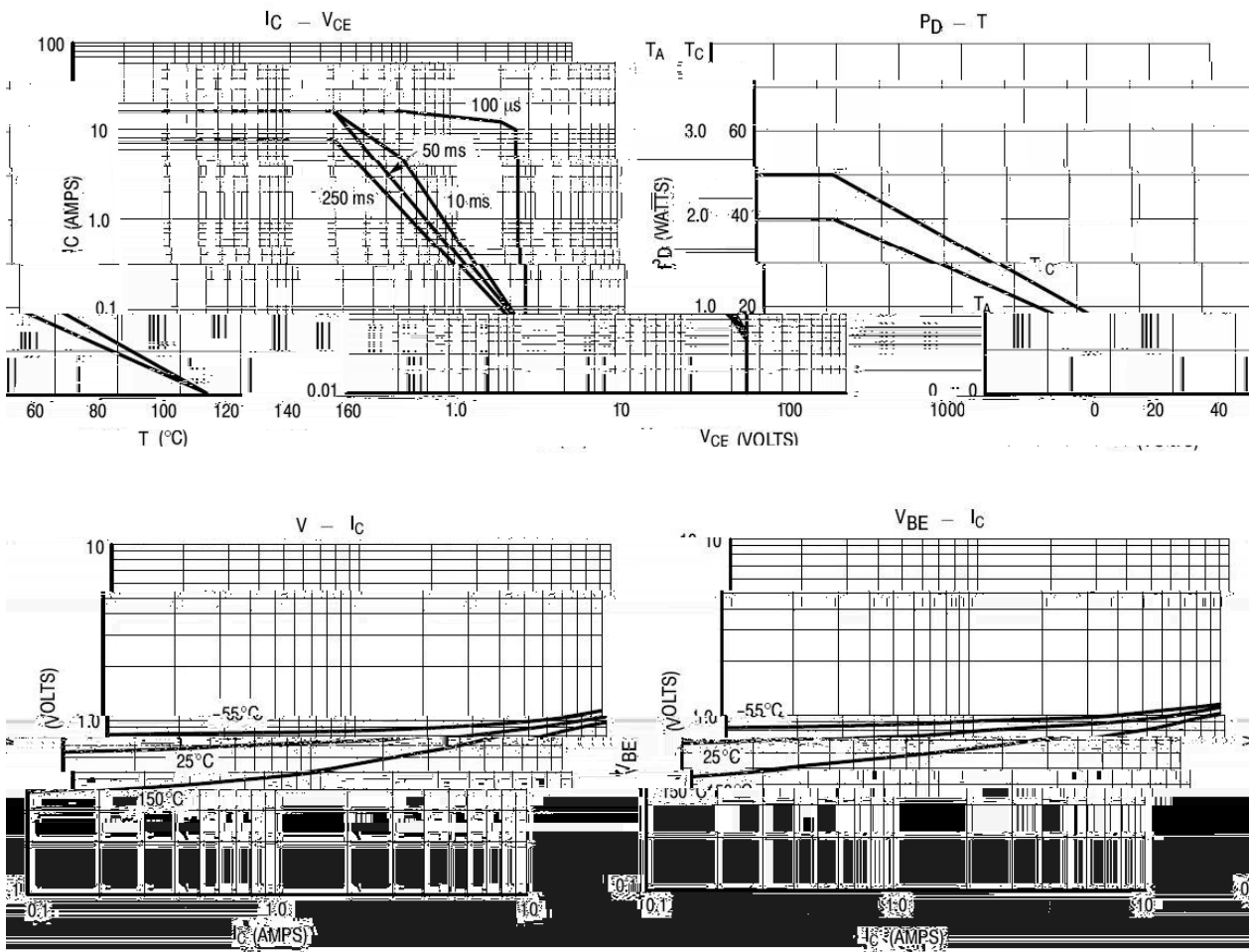
PIN1 Base PIN 2 4 Collector PIN 3 Emitter

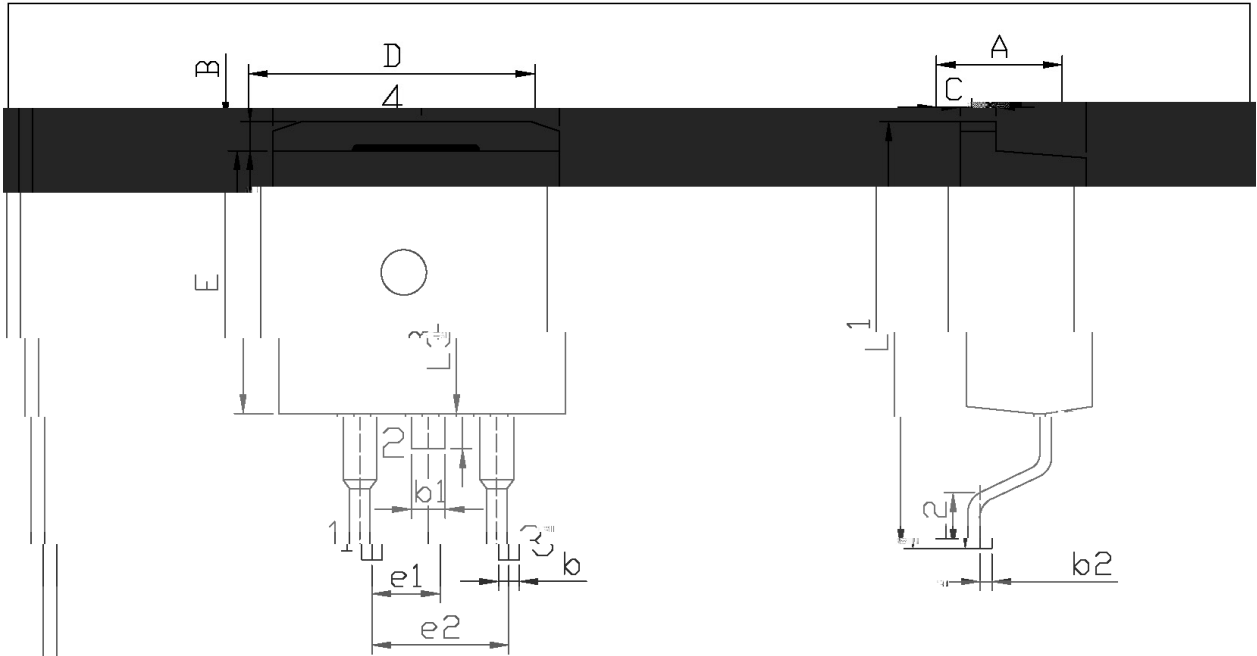
See Marking Instructions.

Parameter	Symbol	Rating	Unit
Collector to Base Voltage	V_{CBO}	250	V
Collector to Emitter Voltage	V_{CEO}	250	V
Emitter to Base Voltage	V_{EBO}	5	V
Collector Current - Continuous	I_C	8	A
Base current	I_B	2	A
Total power dissipation	P_D	2	W
	$P_D(T_C=25^\circ\text{C})$	50	W
Junction Temperature	T_j	150	
Storage Temperature Range	T_{stg}	-65 150	
Thermal Resistance Junction-case	$R_{\theta JC}$	2.5	/W
Thermal Resistance Junction-ambient	$R_{\theta JA}$	62.5	/W

Parameter	Symbol	Test Conditions	Min	Typ	Max	Unit
Collector to Emitter Breakdown Voltage	V_{CEO}	$I_C=10\text{mA}$ $I_B=0$	250			V
Collector Cut-Off Current	I_{CBO}	$V_{CB}=250\text{V}$ $I_E=0$			1.0	μA
Emitter Cut-Off Current	I_{EBO}	$V_{EB}=5.0\text{V}$ $I_C=0$			1.0	μA
DC Current Gain	* $h_{FE(1)}$	$V_{CE}=5.0\text{V}$ $I_C=1.0\text{A}$	5000			
	* $h_{FE(2)}$	$V_{CE}=5.0\text{V}$ $I_C=0.5\text{A}$	5000			
	* $h_{FE(3)}$	$V_{CE}=5.0\text{V}$ $I_C=2.0\text{A}$	3000			
Collector to Emitter Saturation Voltage*	* $V_{CE(sat)}$	$I_C=1.0\text{A}$ $I_B=0.1\text{A}$			1.0	V
Base to Emitter On Voltage*	* $V_{BE(on)}$	$V_{CE}=5.0\text{V}$ $I_C=1.0\text{A}$			1.5	V
Transition Frequency	f_T	$V_{CE}=10\text{V}$ $I_C=500\text{mA}$ $f=1.0\text{MHz}$	30			MHz

* $300\mu\text{s}$ 2% *Pulse Test: Pulse Width $\leq 300\mu\text{s}$, Duty Cycle $\leq 2\%$.

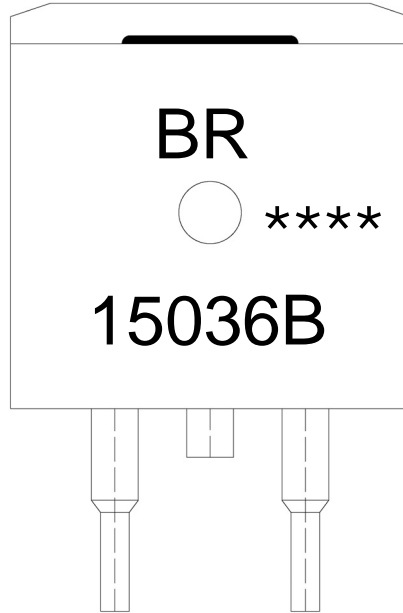




单位: mm

Symbol	Dimensions In Millimeters		Symbol	Dimensions In Millimeter	
	Min	Max		Min	Max
A	4.30	4.70	E	9.00	9.40
B	1.00	1.40	e1	2.34	2.74
b	0.70	0.90	e2	4.88	5.28





BR

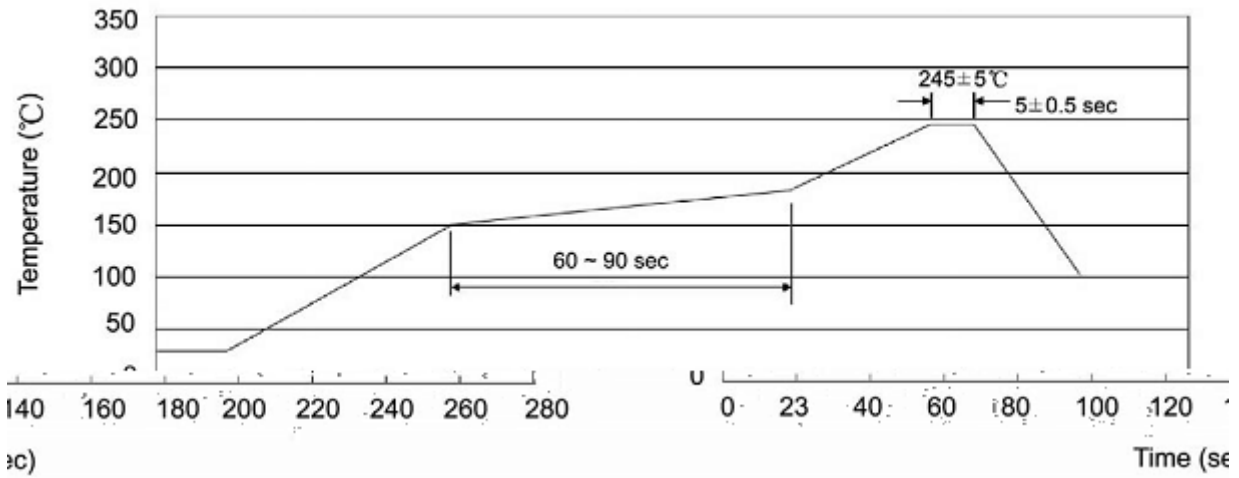
15036B

Note:

BR: Company Code

15036B: Product Type.

****: Lot No. Code, code change with Lot No.



Note:

- | | | | | | |
|---|-------|-----|----|-----------|---|
| 1 | 25 | 150 | 60 | 90sec; | 1.Preheating:25~150 , Time:60~90sec. |
| 2 | 245±5 | | | 5±0.5sec; | 2.Peak Temp.:245±5 , Duration:5±0.5sec. |
| 3 | | | 2 | 10 /sec. | 3. Cooling Speed: 2~10 /sec. |

 260 ± 5
 $10 \pm 1 \text{ sec.}$

 Temp.: 260 ± 5

 Time: $10 \pm 1 \text{ sec}$

/ REEL

Package Type	Units					Dimension (unit mm ³)		
	Units/Reel	Reels/Inner Box	Units/Inner Box	Inner Boxes/Outer Box	Units/Outer Box	Reel	Inner Box	Outer Box
TO-263	800	1	800	5	4,000	13 ×24	360×360×50	385×257×392

/ TUBE

Package Type	Units					Dimension (unit mm ³)		
	Units/Tube	Tubes/Inner Box	Units/Inner Box	Inner Boxes/Outer Box	Units/Outer Box	Tube	Inner Box	Outer Box
TO-263	50	20	1,000	5	5,000	532×33×7.0	555×164×50	575×290×180