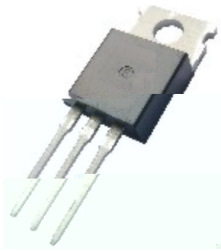
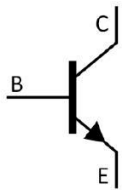


Silicon NPN transistor in a TO-220 Plastic Package.

High DC current gain, High V_{CE0} , High f_T , Complementary pair with MJE15037.

Designed for us as high-frequency drivers in audio amplifiers.

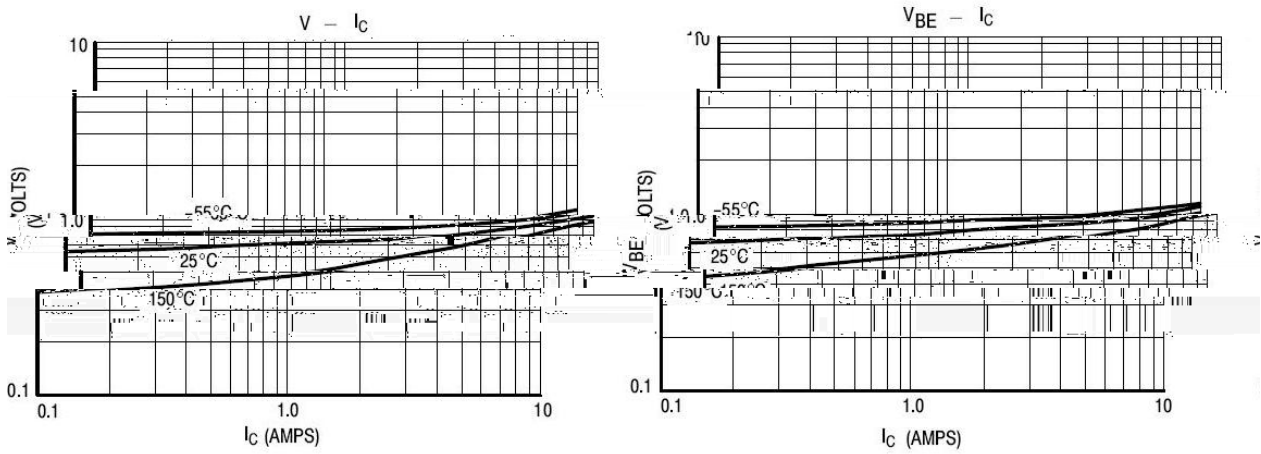
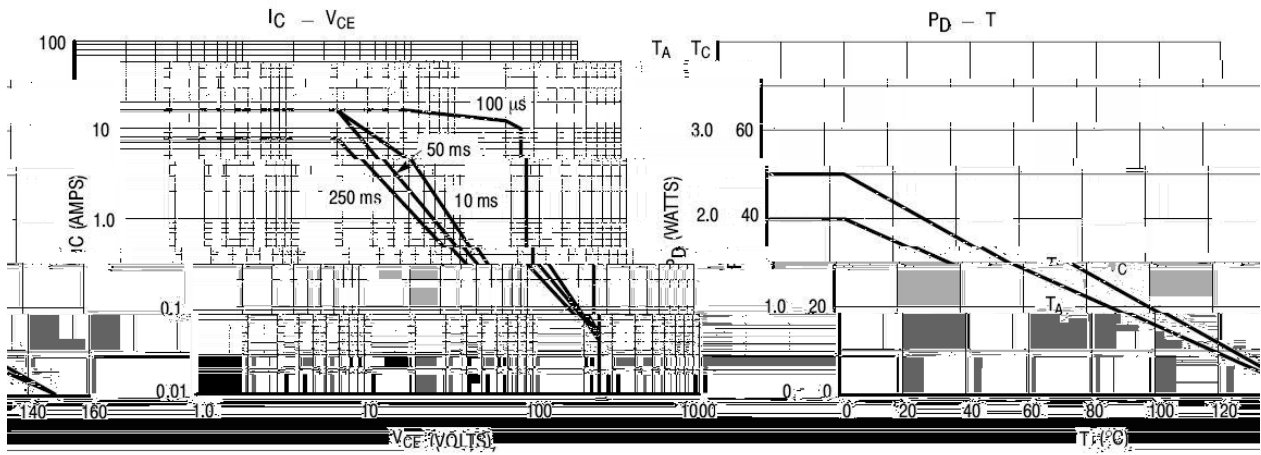


PIN1 Base PIN 2 Collector PIN 3 Emitter

See Marking Instructions.

Parameter	Symbol	Rating	Unit
Collector to Base Voltage	V_{CBO}	250	V
Collector to Emitter Voltage	V_{CEO}	250	V
Emitter to Base Voltage	V_{EBO}	5	V
Collector Current - Continuous	I_C	8	A
Base Current - Continuous	I_B	2	A
Collector Power Dissipation	P_D	2	W
	$P_D(T_C=25^\circ\text{C})$	50	W
Junction Temperature	T_j	150	
Storage Temperature Range	T_{stg}	-65 150	
Thermal Resistance, Junction to Case	R_{JC}	2.5	/W
Thermal Resistance, Junction to Ambient	R_{JA}	62.5	/W

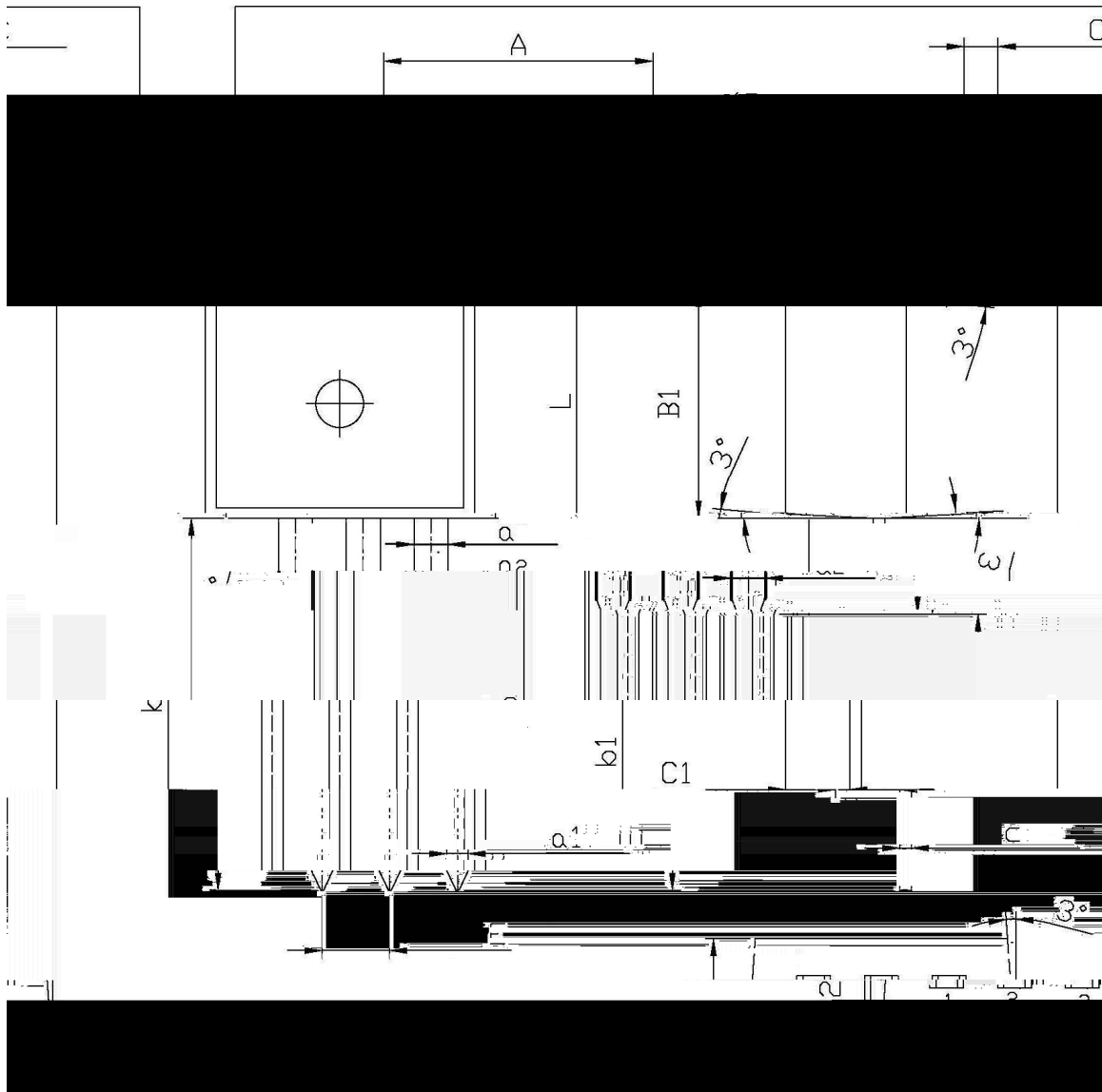
Parameter	Symbol	Test Conditions	Min	Typ	Max	Unit
Collector to Emitter Breakdown Voltage	$*V_{CEO}$	$I_C=10\text{mA}$ $I_B=0$	250			V
Collector Cut-Off Current	I_{CBO}	$V_{CB}=250\text{V}$ $I_E=0$			1	μA
Emitter Cut-Off Current	I_{EBO}	$V_{BE}=5\text{V}$ $I_C=0$			1	μA
DC Current Gain	$*h_{FE(1)}$	$V_{CE}=5\text{V}$ $I_C=1\text{A}$	5000			
	$*h_{FE(2)}$	$V_{CE}=5\text{V}$ $I_C=0.5\text{A}$	5000			
	$*h_{FE(3)}$	$V_{CE}=5\text{V}$ $I_C=2\text{A}$	3000			
Collector to Emitter Saturation Voltage	$*V_{CE(sat)}$	$I_C=1\text{A}$ $I_B=0.1\text{A}$			1.0	V
Base to Emitter On Voltage	$*V_{BE(on)}$	$V_{CE}=5\text{V}$ $I_C=1\text{A}$			1.5	V
Transition Frequency	f_T	$V_{CE}=10\text{V}$ $I_C=500\text{mA}$ $f=1\text{MHz}$				



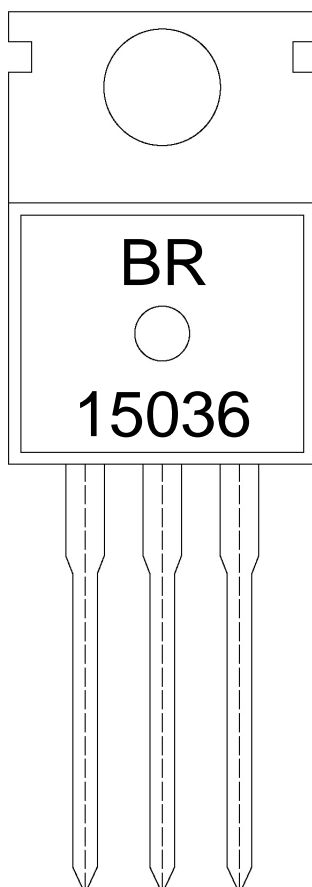
mm

TO-220

单位:



Symbol	Dimensions in millimeters		Symbol	Dimensions in millimeters	
	Min	Max		Min	Max
Δ	9.8	10.2	C	1.2	1.4
R	3.56	3.64	B	6.3	6.7
B1	9.0	9.4			15.7
	1.22	1.32			a
	0.4	0.6			0.2
	1.25	1.45			

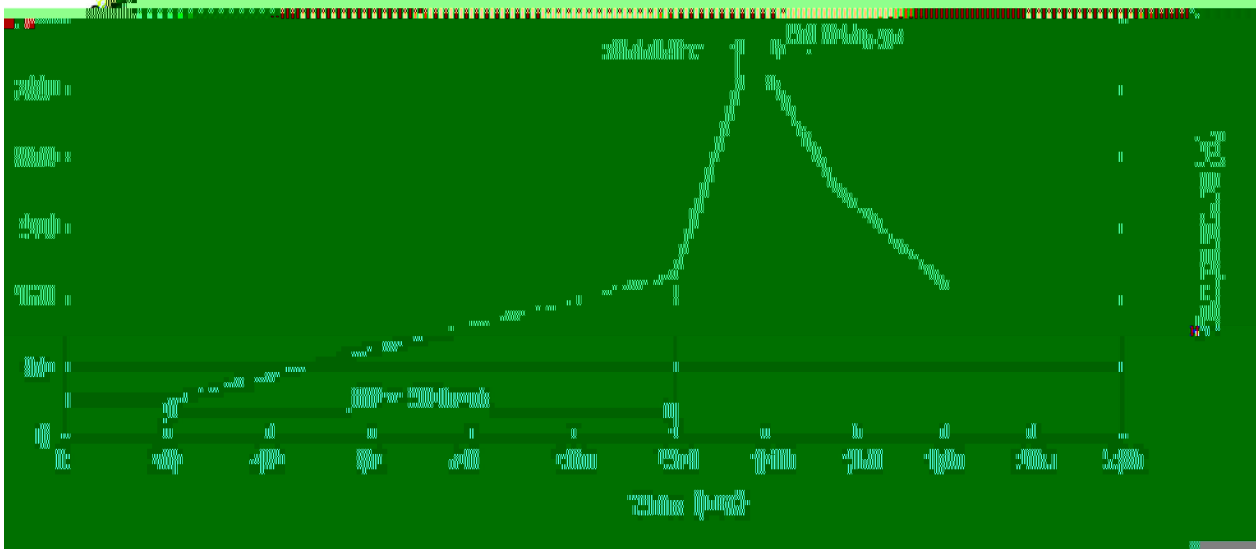


Note:

BR: Company Code

15036: Product Type.

***: Lot No. Code, code change with Lot No.


Note:

- | | | | | | |
|---|-----|-----|----|----------|---|
| 1 | 25 | 150 | 60 | 90sec; | 1.Preheating:25~150 , Time:60~90sec. |
| 2 | 255 | 5 | 5 | 0.5sec; | 2.Peak Temp.:255 5 , Duration:5 0.5sec. |
| 3 | | | 2 | 10 /sec. | 3. Cooling Speed: 2~10 /sec. |

270 5 10 1 sec. Temp.:270±5 Time:10±1 sec

/ BULK

Package Type	Units				Dimension (unit mm ³)		

/ TUBE

Package Type	Units				Dimension (unit mm ³)		