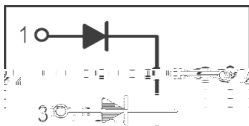


Schottky Barrier Diode in a TO-220 Plastic Package.

Low forward voltage drop, low power losses, High efficiency operation.

For use in high frequency inverters, switching power supplies, freewheeling diodes, OR-ing diode, dc-to-dc converters and reverse battery protection.



PIN1 Anode PIN 2 Cathode PIN 3 Anode

See Marking Instructions.

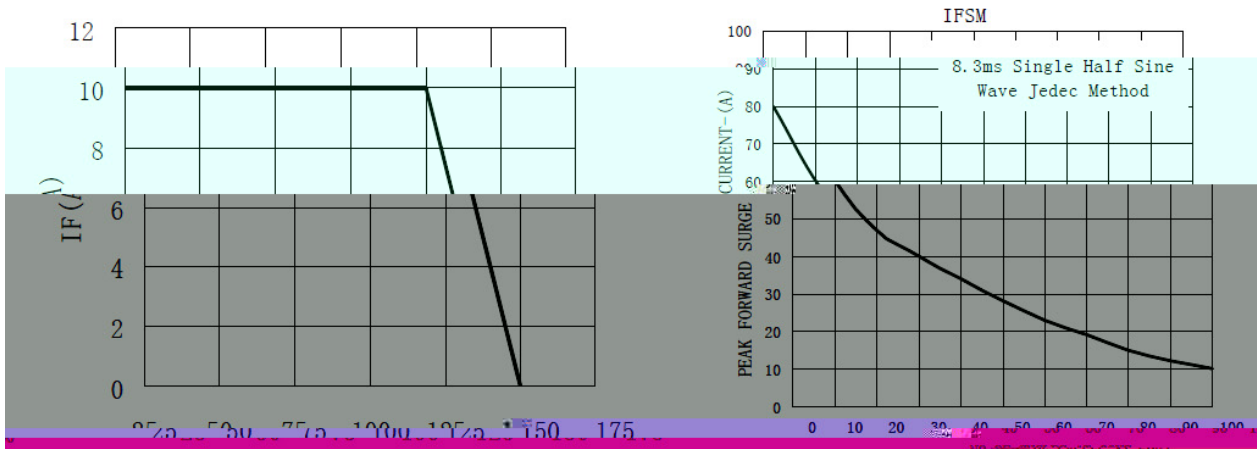
Parameter	Symbol	Rating	Unit
Peak Repetitive Reverse Voltage Working Peak Reverse Voltage DC Blocking Voltage	V_{RM} V_{RSM} V_{DC}	150	V
RMS Reverse Voltage	V_{RMS}	105	V
Average Rectified Output Current	$I_{F(AV)}$	2×5	A
Non Repetitive Peak Surge Current	I_{FSM}	80	A
Thermal Resistance Junction to Case	$R_{\theta Jc}$	3.0	$^{\circ}C/W$
Junction and Storage Temperature Range	T_j T_{stg}	-55~+150	$^{\circ}C$

Parameter	Symbol	Test Conditions	Min	Typ	Max	Unit
Breakdown Reverse Voltage	V_{BR}	$I_R=1mA(T_a=25^{\circ}C)$	150			V
Forward Voltage	V_F	$I_F=3A(T_a=25^{\circ}C)$		0.76	0.83	V
		$I_F=5A(T_a=25^{\circ}C)$		0.86	0.95	V
		$I_F=3A(T_a=125^{\circ}C)$		0.61		V
		$I_F=5A(T_a=125^{\circ}C)$		0.67	0.75	V
Instantaneous Reverse Current	I_R (Note 1)	$V_R=150V(T_a=25^{\circ}C)$			15	μA
		$V_R=150V(T_a=125^{\circ}C)$		1.0	5.0	mA

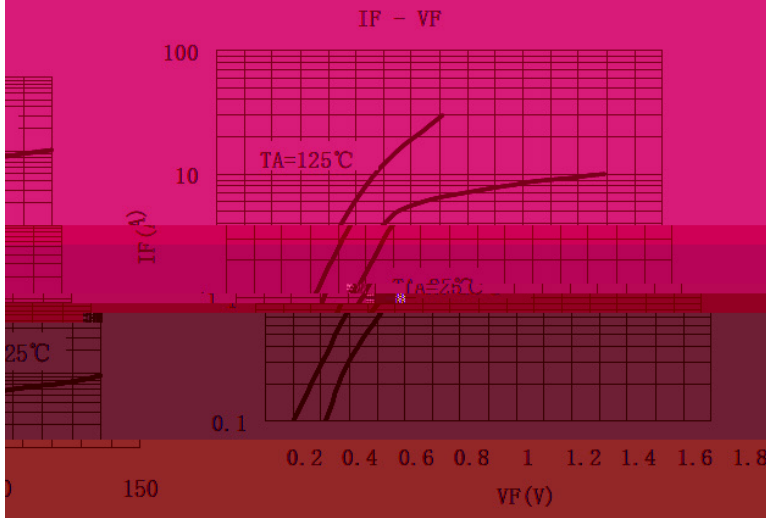
/Notes:

1. $I_{R(1)}$ /Short duration pulse test used to minimize self-heating effect.
2. $I_{R(2)}$ / Unless otherwise noted, values for the parameters of a single chip

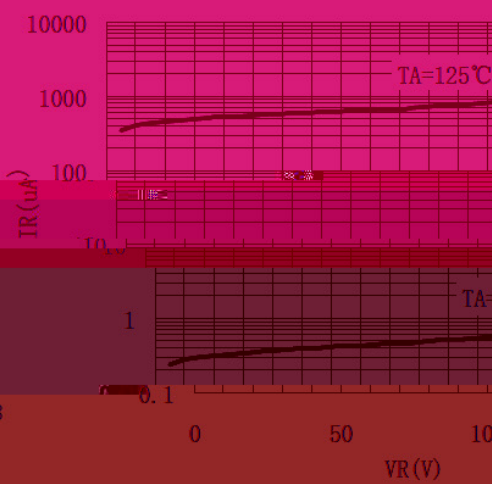
IF - TC



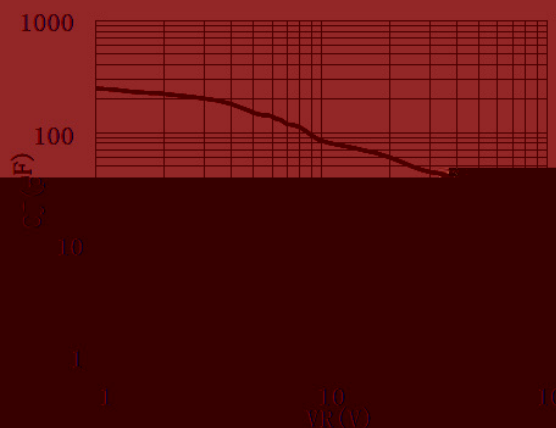
TC (°C)



IR - VR

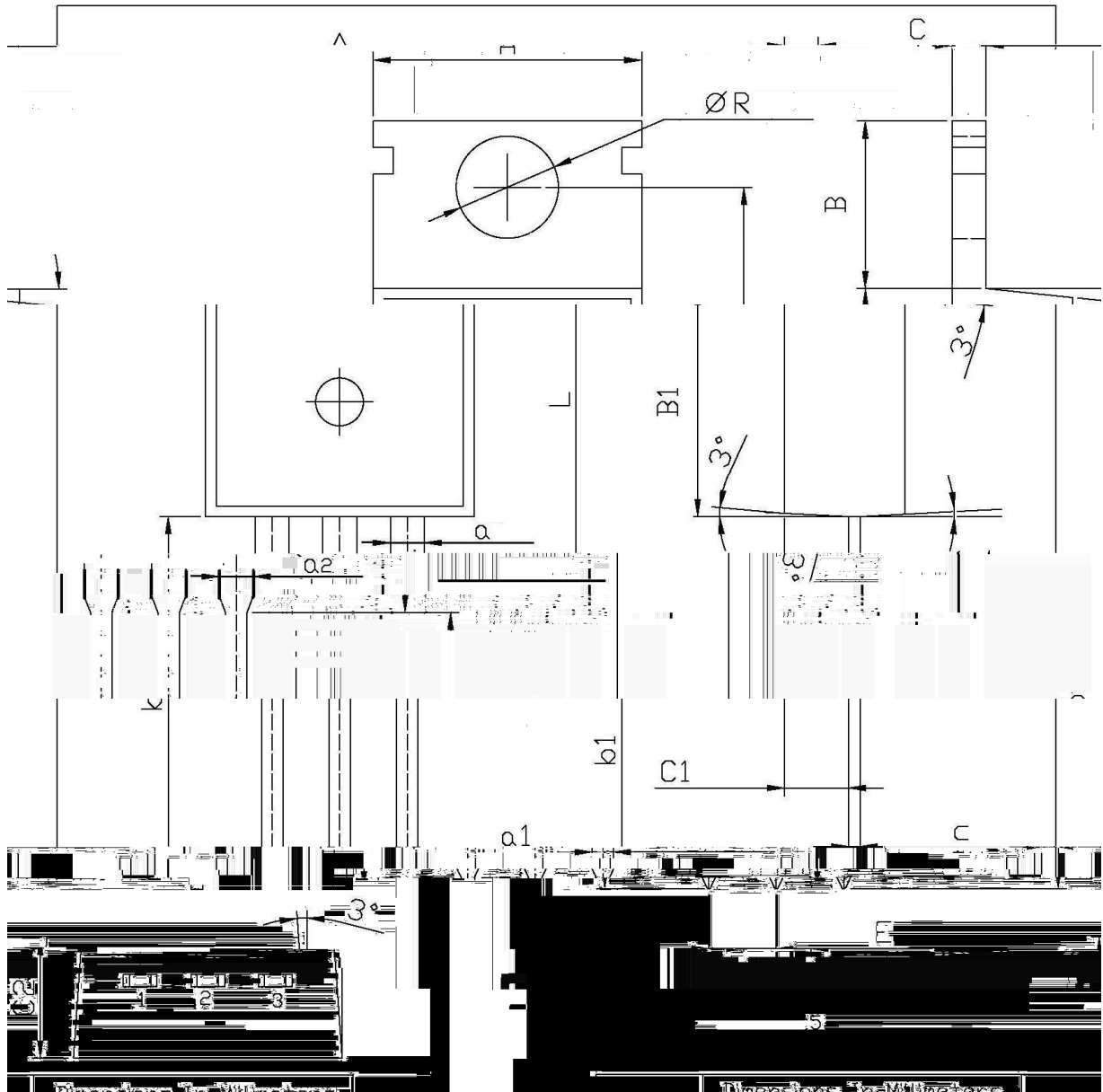


CJ - VR

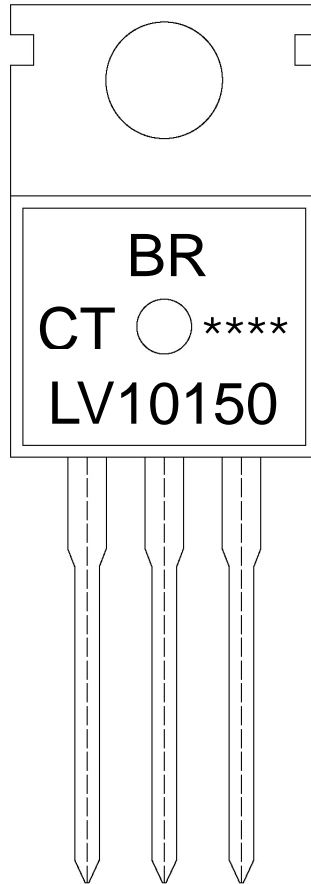


TO-220

单位: mm



Symbol	Min	Max	Symbol	Min	Max
R	3.56	3.64	B	6.3	6.7
L	15.7	16.1	B1	9.0	9.4
b	12.6	13.6	C1	2.2	2.6
c	0.4	0.6	a	1.2	1.22
c1	4.3	4.7	F	2.34	
1.25	1.45		1.02		



Note:

BR:

Company Code

LV10150

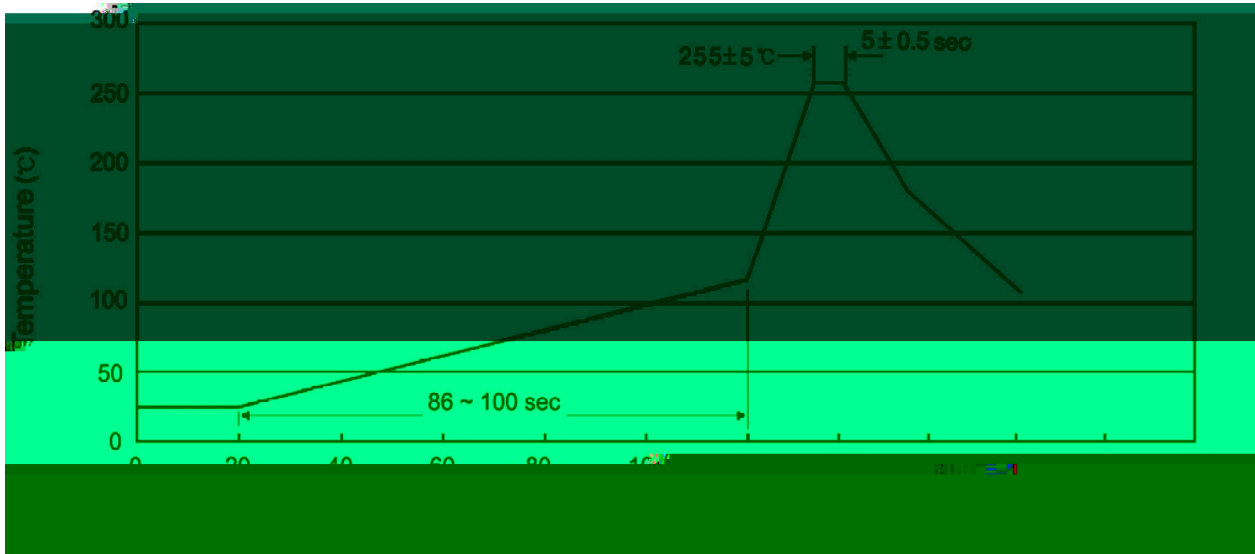
Product Type.

CT:

Internal Structure

****:

Lot No. Code, code change with Lot No.


Note:

- | | | | | | |
|---|-----|-----|----|----------|---|
| 1 | 25 | 150 | 60 | 90sec; | 1.Preheating:25~150 , Time:60~90sec. |
| 2 | 255 | 5 | 5 | 0.5sec; | 2.Peak Temp.:255 5 , Duration:5 0.5sec. |
| 3 | | | 2 | 10 /sec. | 3. Cooling Speed: 2~10 /sec. |

270 5 10 1 sec. Temp.:270±5 Time:10±1 sec

/ BULK

Package Type	Units					Dimension (unit mm ³)		
	Units/Bag /	Bags/Inner Box /	Units/Inner Box /	Inner Boxes/Outer Box /	Units/Outer Box /	Bag	Inner Box	Outer Box
TO-220/F	200	10	2,000	5	10,000	135×190	237×172×102	560×245×195