

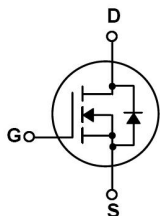
/ Descriptions

/ Features

/ Applications

DC/DC

/ Equivalent Circuit



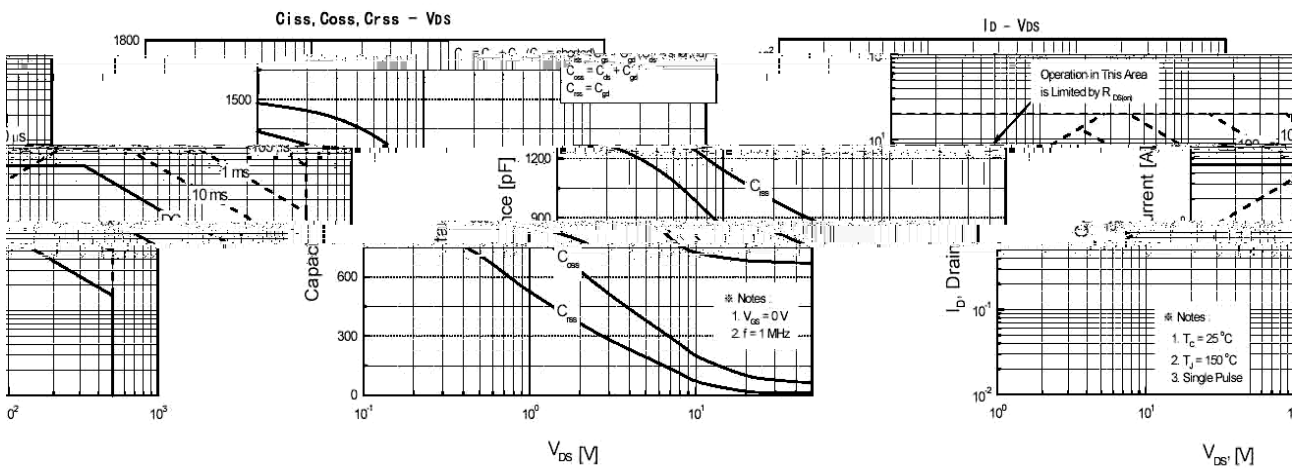
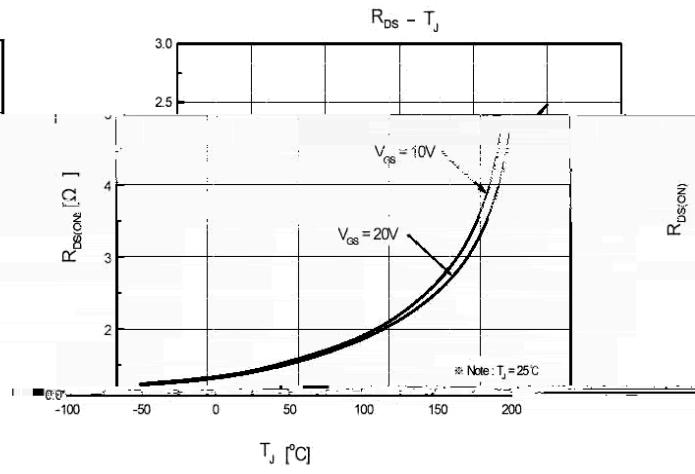
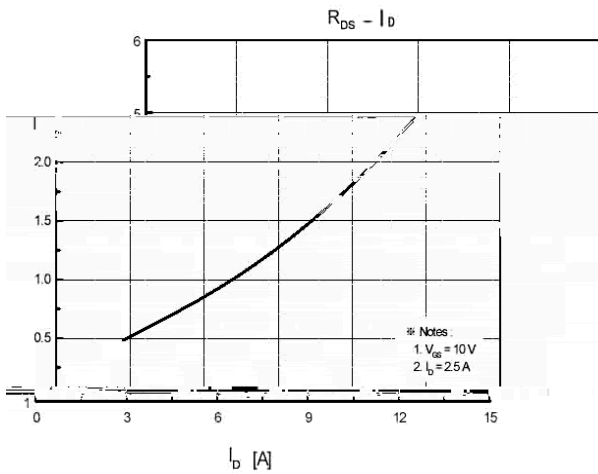
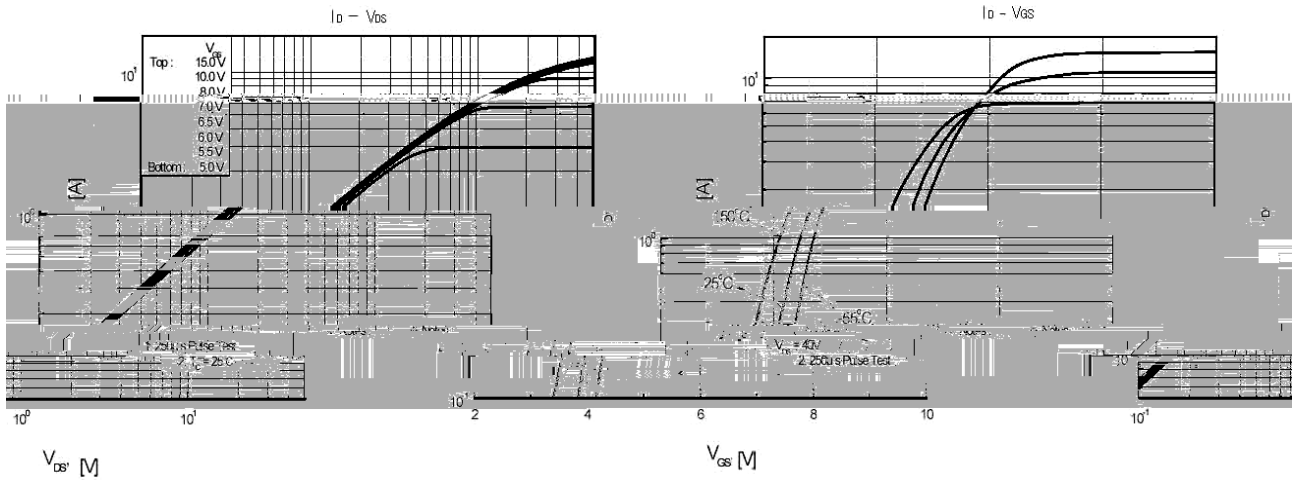
/ Pinning



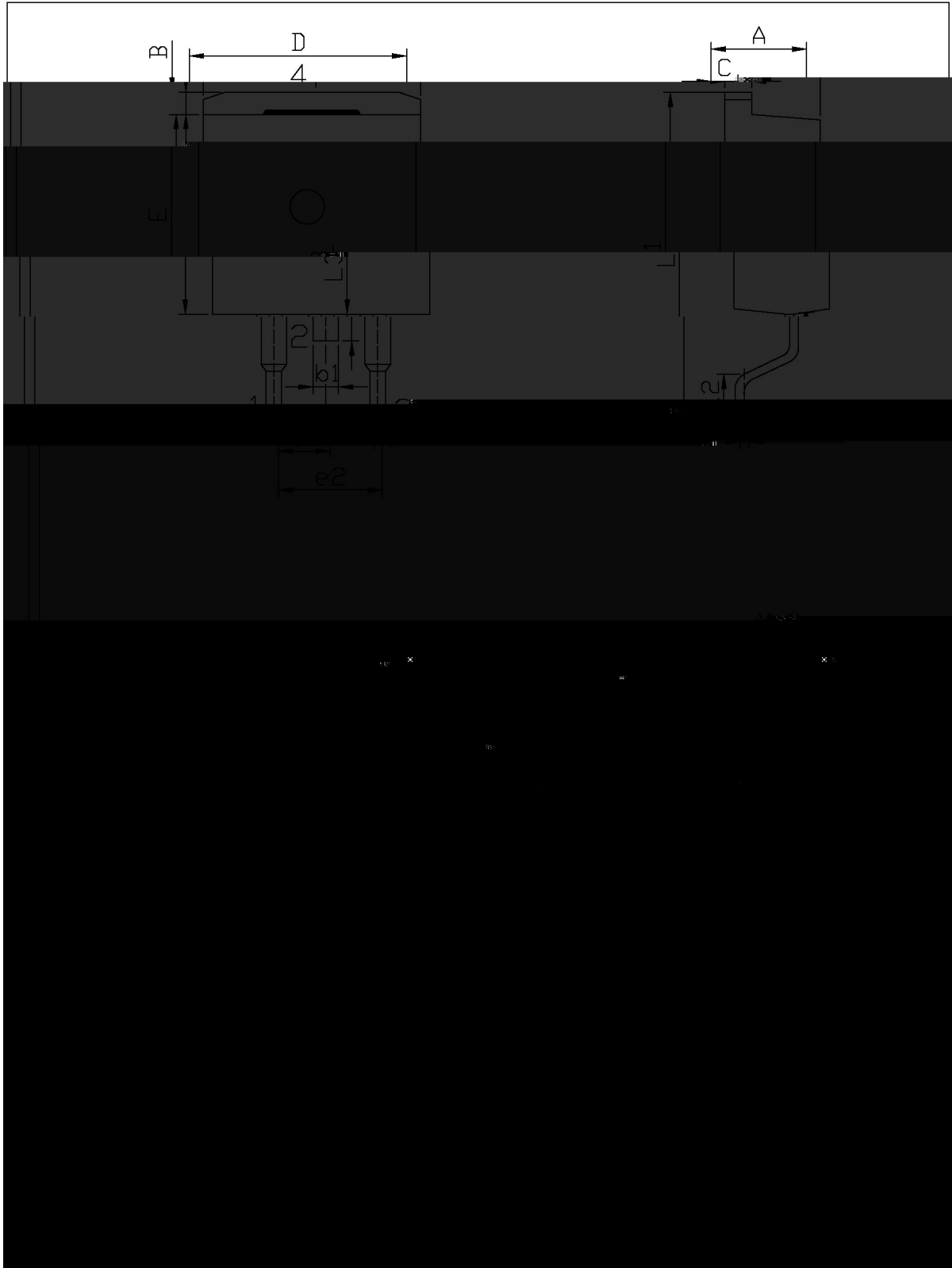
/ h_{FE} Classifications & Marking

	°C		
	°C		
	°C		

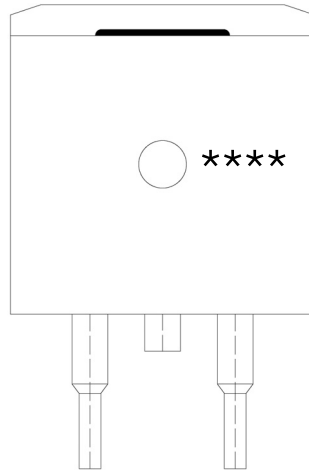
/ Electrical Characteristic Curve



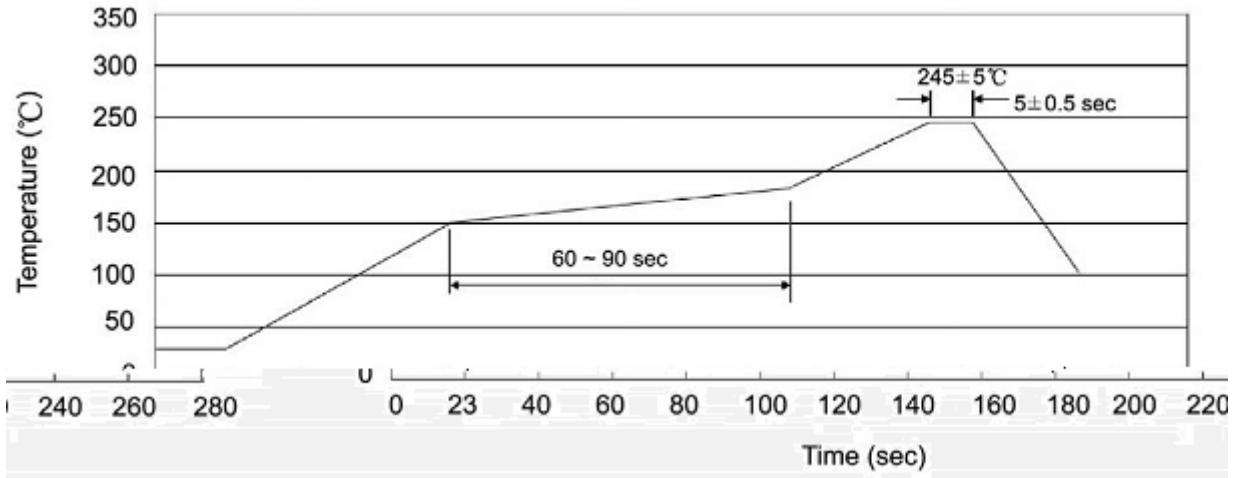
/ Package Dimensions



/ Marking Instructions



() / Temperature Profile for IR Reflow Soldering(Pb-Free)



± ± ± ±

/ Resistance to Soldering Heat Test Conditions

± ±

/ Packaging SPEC.

						Reel	Inner Box	Outer Box
	Units/Reel	Reels/Inner Box	Units/Inner Box	Inner Boxes/Outer Box	Units/Outer Box			
TO-263	800	1	800	5	4,000	13" ×24	360×360×50	385×257×392

						Tube	Inner Box	Outer Box
	Units/Tube	Tubes/Inner Box	Units/Inner Box	Inner Boxes/Outer Box	Units/Outer Box			
TO-263	50	20	1,000	5	5,000	532×33×7.0	555×164×50	575×290×180

/ Notices