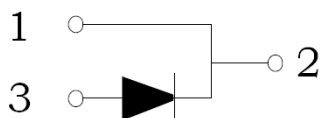


TO-220AC

Schottky Barrier Diode in a TO-220AC Plastic Package.

Low power loss,high efficiency .

For use in low voltage,high frequency inverters, free wheeling, and polarity protection applications.



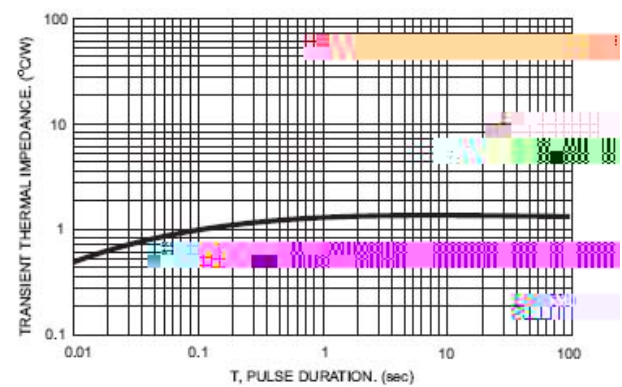
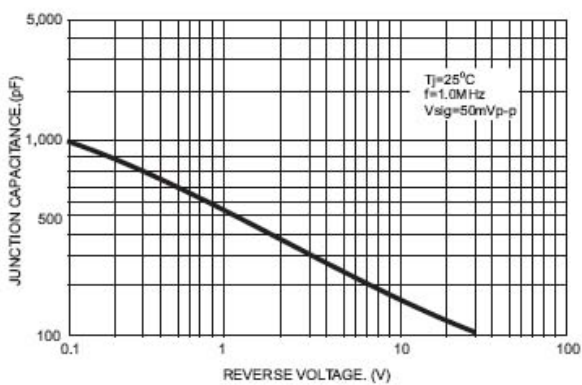
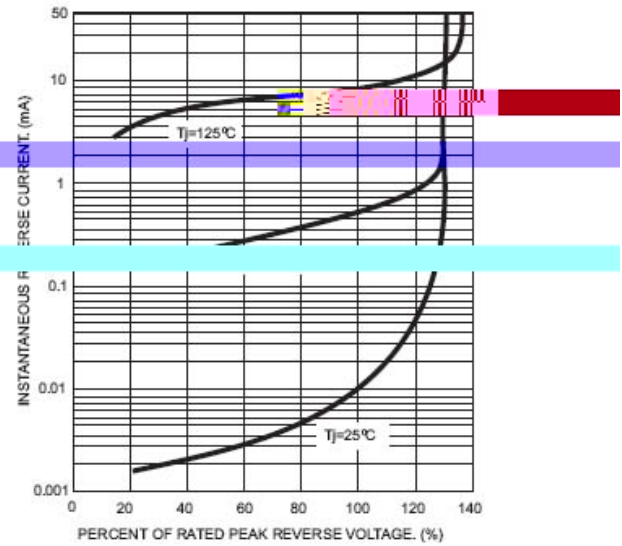
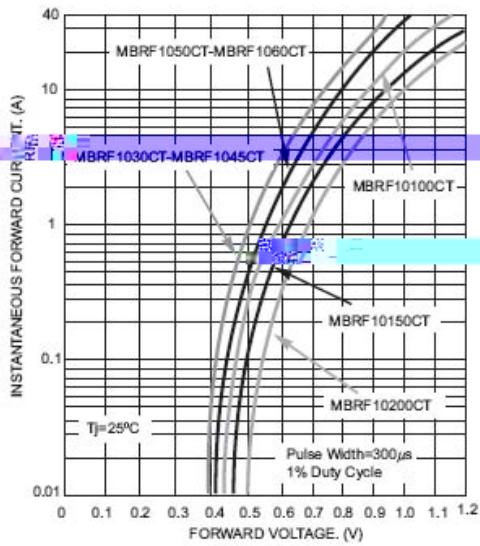
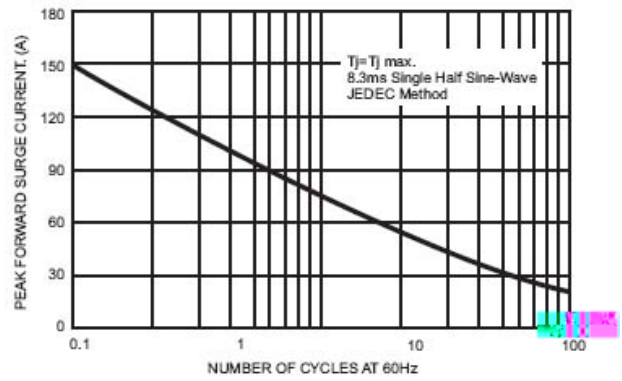
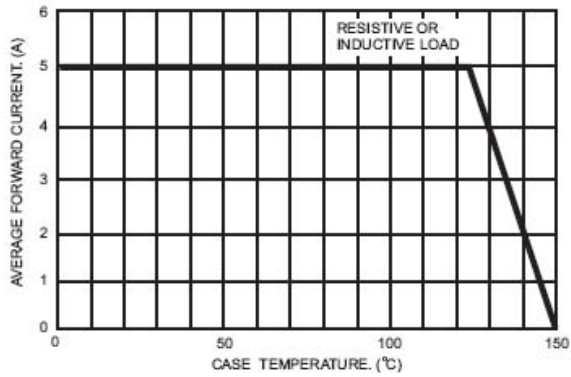
PIN1 2 Cathode

PIN 3 Anode

See Marking Instructions

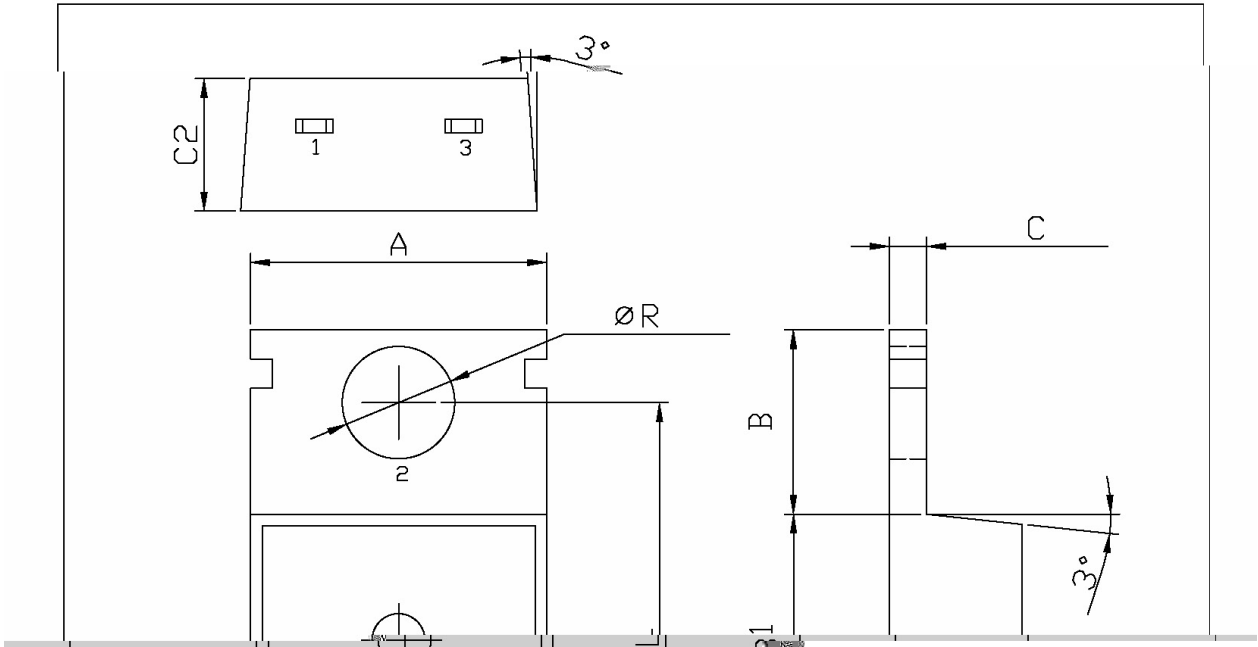
Parameter	Symbol	Rating	Unit
Peak Repetitive Reverse Voltage	V_{RRM}	200	V
Average Forward Rectified Current	$I_{F(AV)}$	10	A
Peak Repetitive Forward Current	I_{FRM}	10	A
Peak Forward Surge Current	I_{FSM}	150	A
Peak Repetitive Reverse Surge Current	I_{RRM}	0.5	A
Typical Thermal Resistance Junction to Case	$R_{\theta JC}$	2.5	$^{\circ}C/W$
Junction Temperature Range	T_j	150	$^{\circ}C$
Storage Temperature Range	T_{stg}	-55 150	$^{\circ}C$

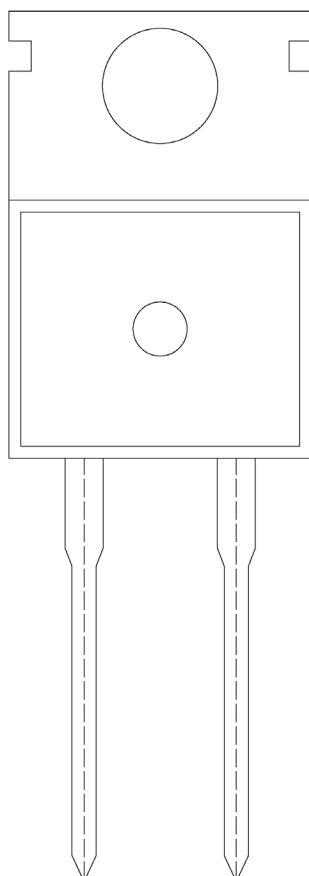
Parameter	Symbol	Test Conditions	Min	Typ	Max	Unit
Reverse Voltage	V_R		200			V
Forward Voltage	V_F	$I_F=5.0A$			0.99	V
		$I_F=5.0A \quad T_C=125$			0.87	V
Instantaneous Reverse Current	I_{RM}	$V_R=200V$			0.15	mA
		$V_R=200V \quad T_C=125$			150	mA
Voltage Rate of Change	dv/dt				10000	V/ μs



TO-220AC

Unit:mm





BR

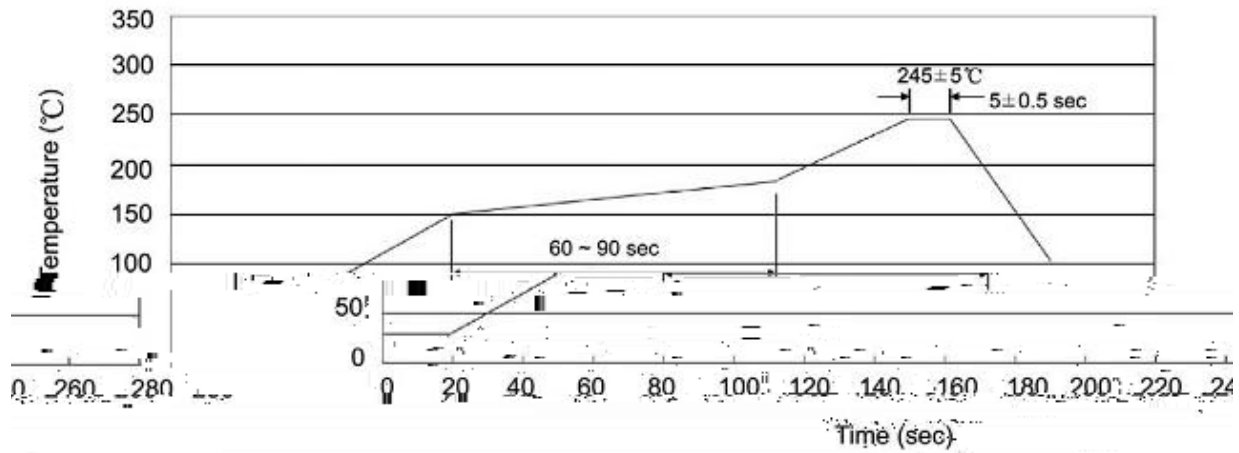
MBR10200

Note:

BR:

Company Code

MBR10200



Note:

- | | | | | | |
|---|-------|-----|-----------|--------|---|
| 1 | 150 | 180 | 60 | 90sec; | 1.Preheating:150~180 , Time:60~90sec. |
| 2 | 255±5 | | 5±0.5sec; | | 2.Peak Temp.:255±5 , Duration:5±0.5sec. |
| 3 | | 2 | 10 | /sec. | 3. Cooling Speed: 2~10 /sec. |

270±5

10±1 sec.

Temp.:270±5°C

Time:10±1 sec

/ BULK

Package Type 封装形式	Units 包装数量					Dimension 包装尺寸 (unit: mm ³)		
	Units/Bag 只/袋	Bags/Inner Box 袋/盒	Units/Inner Box 只/盒	Inner Boxes/Outer Box 盒/箱	Units/Outer Box 只/箱	Bag 袋	Inner Box 盒	Outer Box 箱
TO-220/F/AC	200	10	2,000	5	10,000	135×190	237×172×102	560×245×195

/ TUBE

Package Type 封装形式	Units 包装数量					Dimension 包装尺寸 (unit: mm ³)		
	Units/Tube 只/套管	Tubes/Inner Box 套管/盒	Units/Inner Box 只/盒	Inner Boxes/Outer Box 盒/箱	Units/Outer Box 只/箱	Tube 套管	Inner Box 盒	Outer Box 箱
TO-220/F/AC	50	20	1,000	5	5,000	532×31.4×5.5	555×164×50	575×290×180