

/ Descriptions

TO-251 N MOS
N-CHANNEL MOSFET in a TO-251 Plastic Package.

/ Features

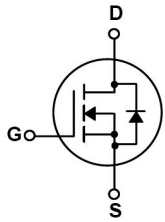
Low gate charge, low crss, fast switching, HF Product.

/ Applications

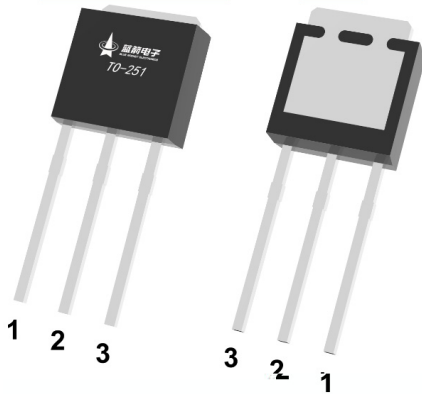
DC/DC

These devices are well suited for high efficiency switching DC/DC converters and switch mode power supplies.

/ Equivalent Circuit



/ Pinning



PIN1 G PIN 2 D PIN 3 S

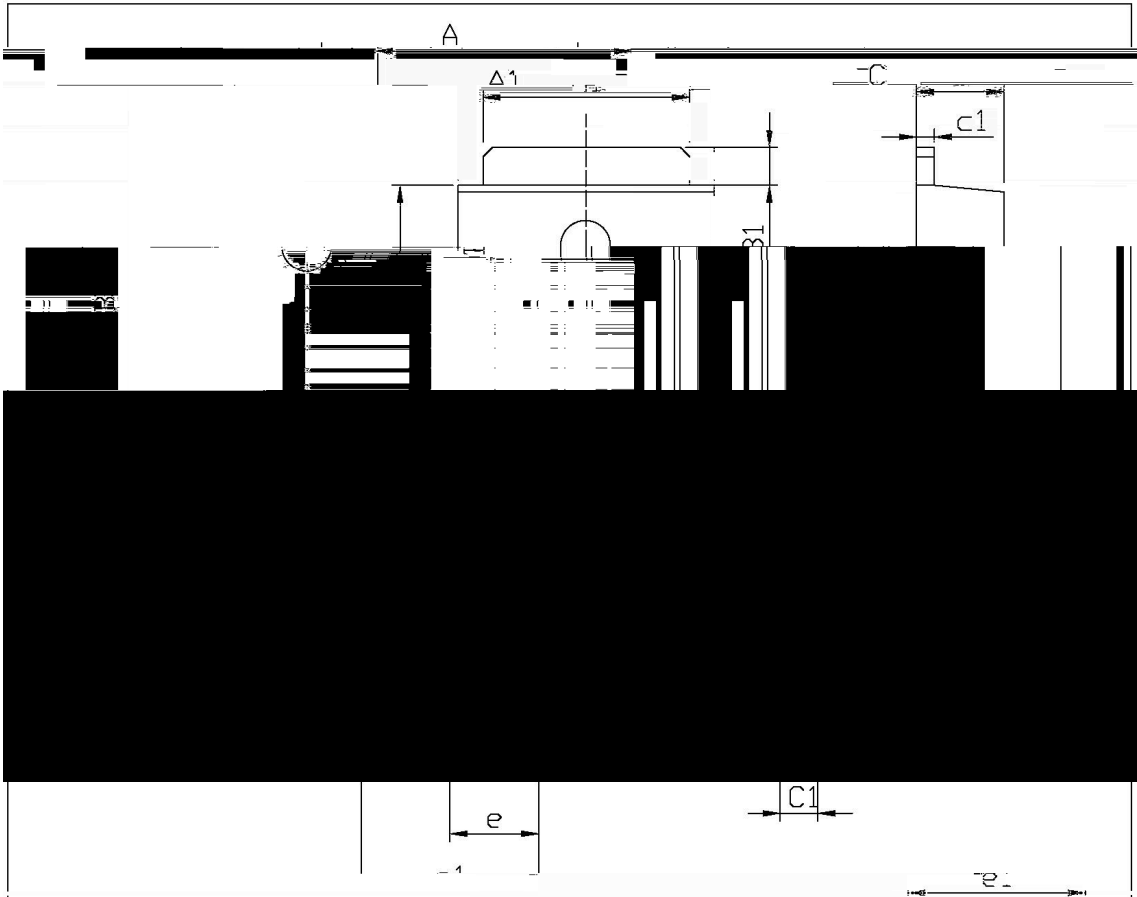
/ Marking

See Marking Instructions.

Parameter	Symbol	Rating	Unit
Drain-Source Voltage	V_{DSS}	400	V
Drain Current	$I_D(T_C=25^\circ C)$	10	A
	$I_D(T_C=100^\circ C)$	6.3	A
Pulsed Drain Current	I_{DM}	40	A
Gate-Source Voltage	V_{GSS}	± 30	V
Avalanche Current	I_{AR}	10	A
Single Pulsed Avalanche Energy	E_{AS}	450	mJ
Repetitive Avalanche Energy	E_{AR}	13.4	mJ

TTw(AR)Tj10.4958 0 0 102203501J JET55DTc=25ARARBT

/ Package Dimensions

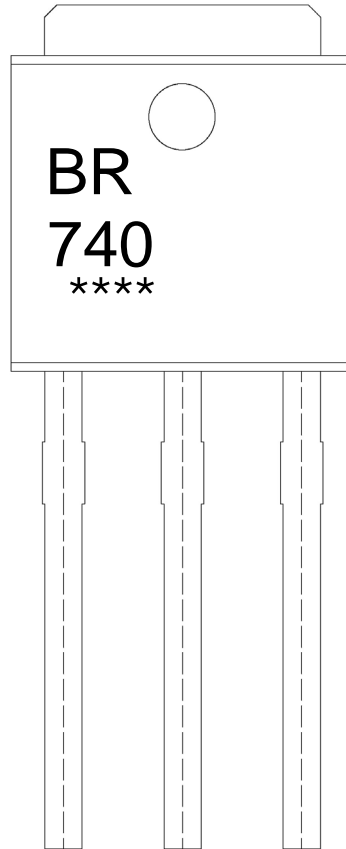


单位: mm

Symbol	Min	Max	Symbol	Min	Max
A	6.40	6.70	b	0.50	0.50
Δ1	5.10	5.50	c	0.45	0.55
B	5.95	6.25	c1	0.45	0.55
B1	0.95	1.25	e	2.24	2.34
C	2.20	2.40	a	0.95	1.15
e1	4.43	4.73			

TIO-251

/ Marking Instructions



BR

740

Note:

BR: Company Code

740: Product Type Code

****: Lot No. Code, code change with Lot No

|

|