

# BRGBJ3006SF

Rev.A Jan.-2018

## 描述 / Descriptions

G9J

Ultrafast Recovery rectifier bridge in a GBJ Plastic Package.

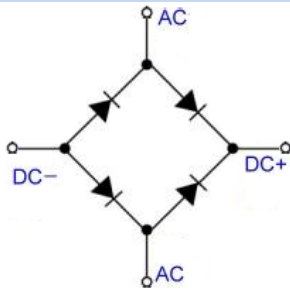
## 特征 / Features

Glass passivated process to produce Ultrafast Recovery rectifier bridge ,with low reverse leakage current and high reliability.

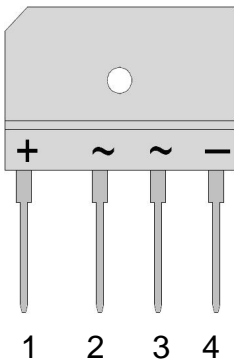
## 用途 / Applications

For high frequency, high voltage, high current rectifier diode, freewheeling diode.

## 内部等效电路 / Equivalent Circuit



## 引脚排列 / Pinning



PIN1 DC+      PIN2 AC      PIN3 AC      PIN4 DC-

## 放大及印章代码 / $h_{FE}$ Classifications & Marking

See Marking Instructions

# BRGBJ3006SF

Rev.A Jan.-2018

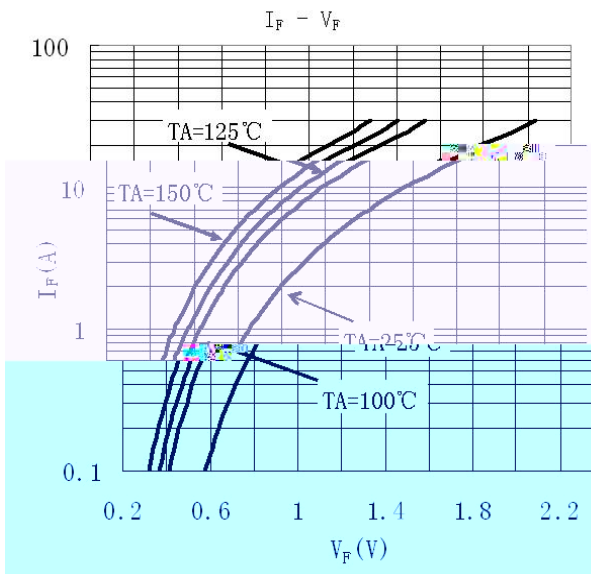
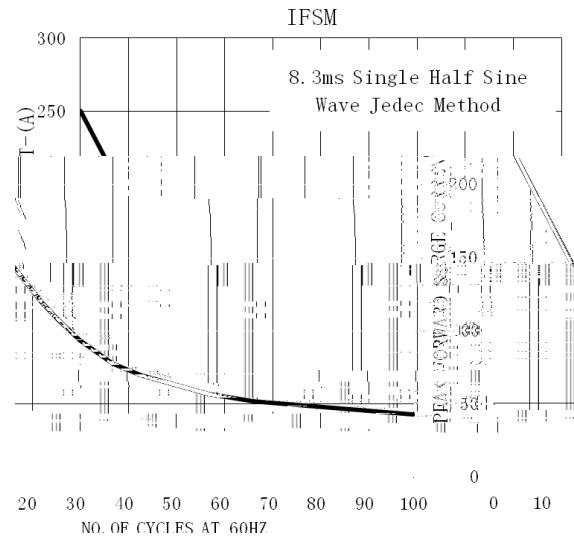
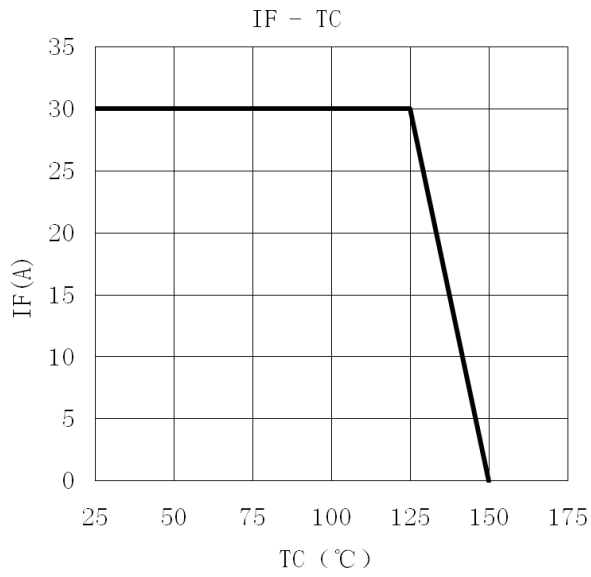


DATA SHEET

Parameter	Symbol	Rating	Unit
Peak Repetitive Reverse Voltage	$V_{RRM}$	600	V
Maximum RMS Voltage	$V_{RMS}$	420	V
Maximum DC Blocking Voltage	$V_{DC}$	600	V
Maximum Average Forward Current	$I_{(AV)}$	4×30	A
Peak forward surge current	$I_{FSM}$	250	A
Typical Thermal Resistance Junction to Case	$R_{Jc}$	0.6	/W
Junction Temperature Range	$T_j$	150	
Storage Temperature Range	$T_{stg}$	-55~150	

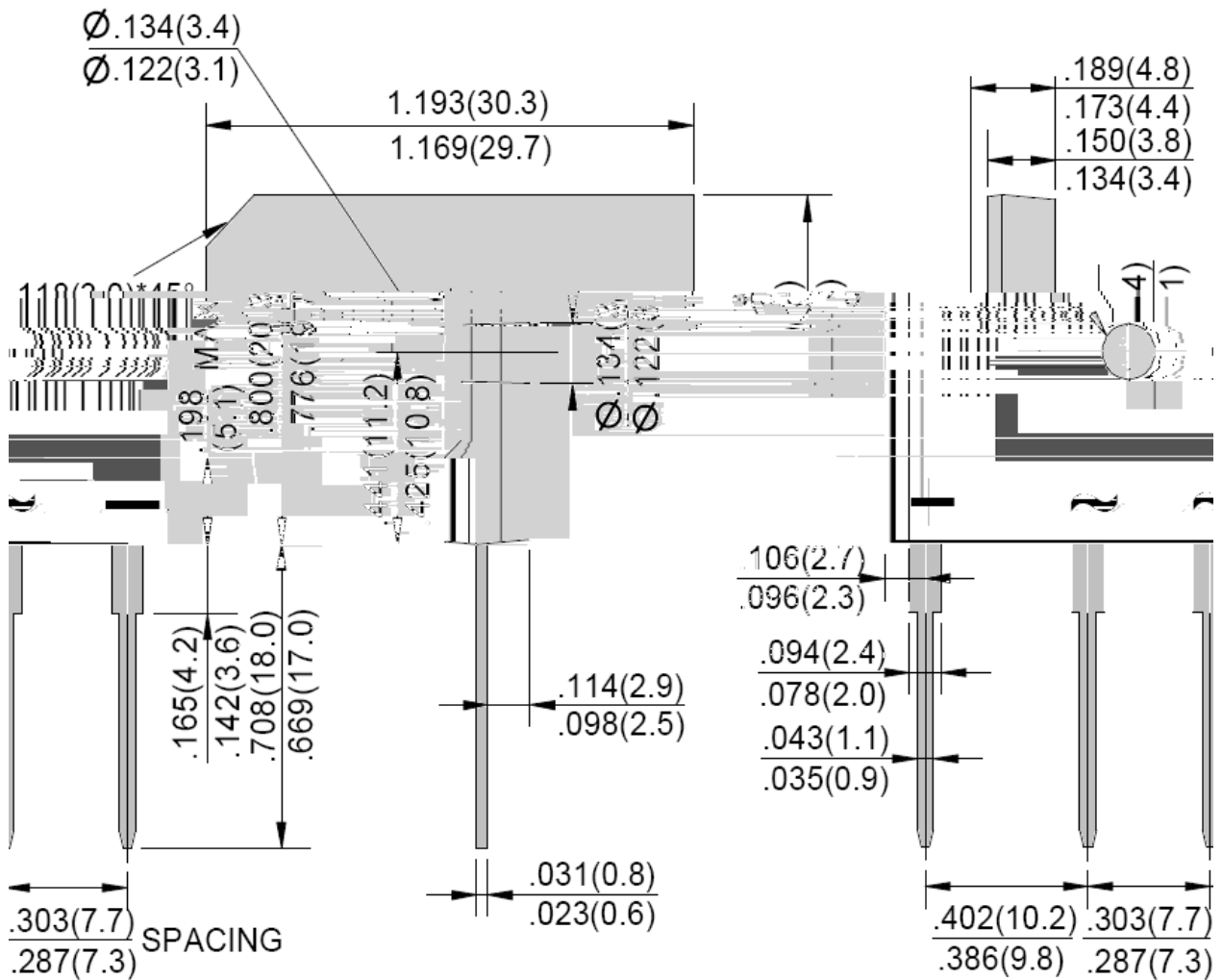
Parameter	Symbol	Test Conditions	Min	Typ	Max	Unit
Reverse Voltage	$V_R$	$I_R=1mA$	600	680		V
	$V_F$	$I_F=5A$ $T_C=25^\circ C$		1.32	1.45	V
		$I_F=5A$ $T_C=125^\circ C$		0.90	1.25	
		$I_F=15A$ $T_C=25^\circ C$		1.90	2.25	
		$I_F=15A$ $T_C=125^\circ C$		1.26	1.65	
		$I_F=30A$ $T_C=25^\circ C$		2.35	2.65	
		$I_F=30A$ $T_C=125^\circ C$		1.65	2.15	
Instantaneous Reverse Current	$I_R$ (Note 1)	$V_R=600V$ $T_a=25^\circ C$			10	$\mu A$
		$V_R=600V$ $T_a=125^\circ C$			500	
Reverse Recovery Time	$t_{rr}$	$I_F=0.5A$ $I_R=1.0A$ $I_{RR}=0.25A$		40	50	ns

## 电参数曲线图 / Electrical Characteristic Curve

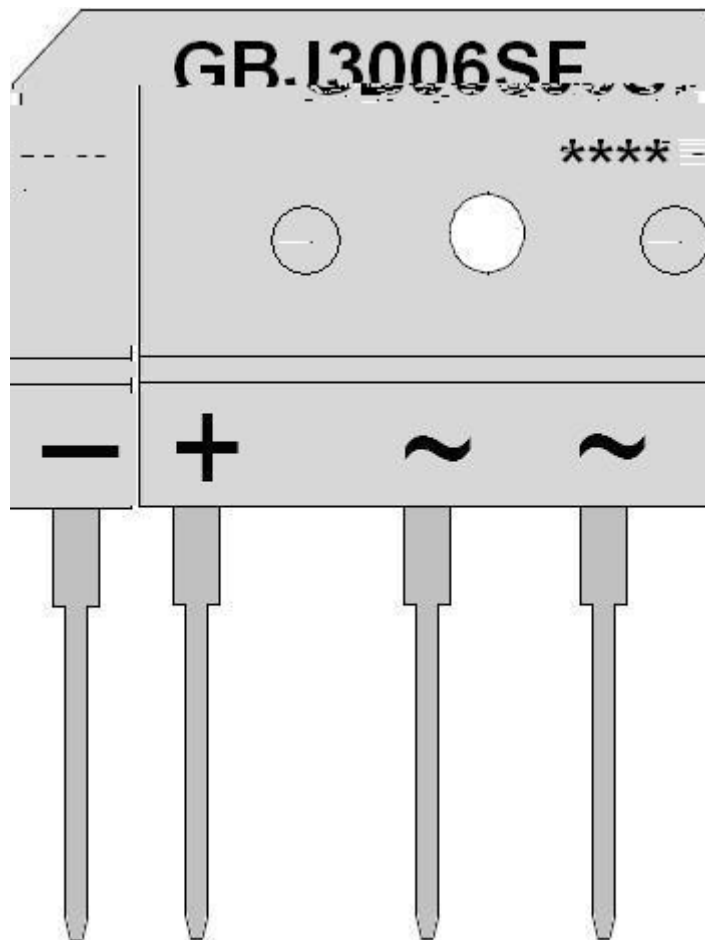


外形尺寸图 / Package Dimensions

**GBJ**



印章说明 / Marking Instructions



GBJ3006SF

\*\*\*\*

+ 8: -

Note:

GBJ3006SF

Product Type

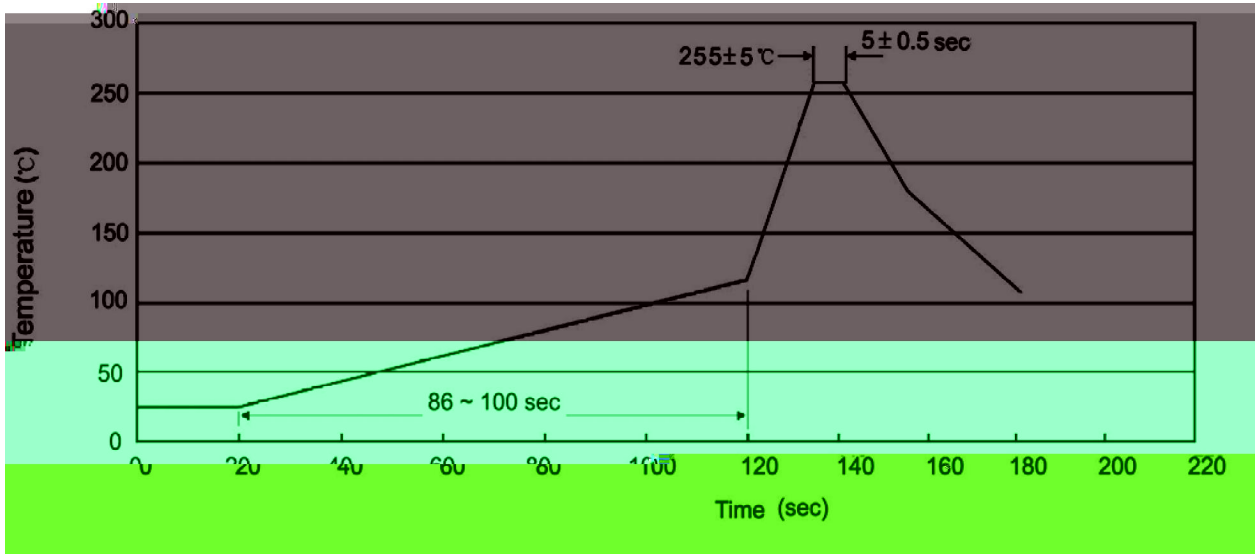
\*\*\*\*

Lot No. Code, code change with Lot No.

+ 8: -

Pie fl eckif e

**波峰焊温度曲线图(无铅) / Temperature Profile for Dip Soldering(Pb-Free)**



Note:

- |   |       |     |       |          |   |
|---|-------|-----|-------|----------|---|
| 1 | 25    | 150 | 60    | 90sec;   | 1.Preheating:25~150 , Time:60~90sec.    |
| 2 | 255±5 |     | 5±0.5 | sec;     | 2.Peak Temp.:255±5 , Duration:5±0.5sec. |
| 3 |       |     | 2     | 10 /sec. | 3. Cooling Speed: 2~10 /sec.            |

**耐焊接热试验条件 / Resistance to Soldering Heat Test Conditions**

270±5                      10±1 sec.                      Temp.:270±5                      Time:10±1 sec

**包装规格 / Packaging SPEC.**

/ PART		/ TUBE	
Package	Dimension	Units/Tube	Dimension

**使用说明 / Notices**