

# BRES24V0M2B3MAQ

## / Descriptions

SOT-23      TVS

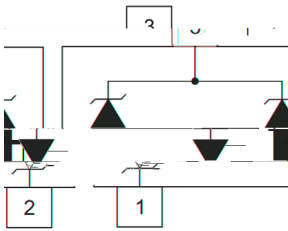
## / Features

AEC-Q101      1ns      30KV      IEC61000-4-2      4      ESD  
--

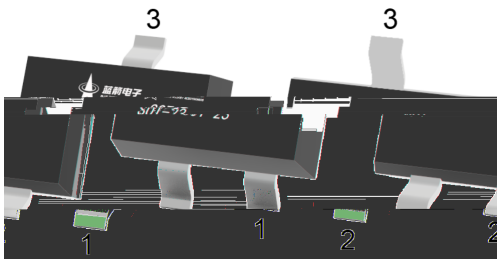
## / Applications

ESD      USB 2.0      IEC 61000-4-2(ESD)      ± 30kV ( )  
, ± 30kV ( )

## / Equivalent Circuit



## / Pinning



## / Marking

/ Absolute Maximum Ratings(Ta=25 )

	μ		
	μ		
			°C
			°C

/ Electrical Characteristics(Ta=25 )

						μ
			μ			
			μ			

/ Electrical Characteristic Curve

Fig.1 Non-Repetitive Pulse Power vs.Pulse Time

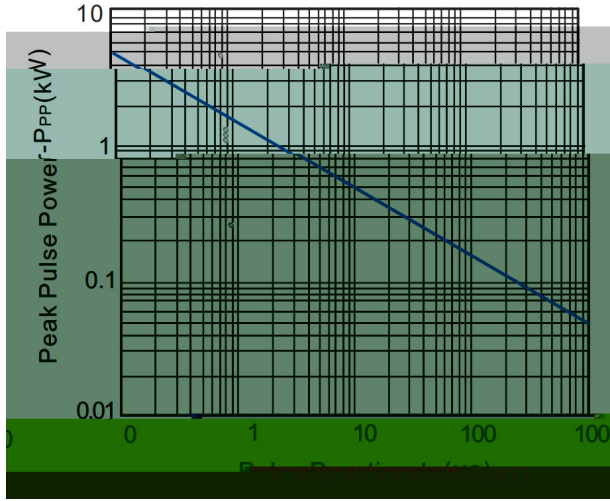
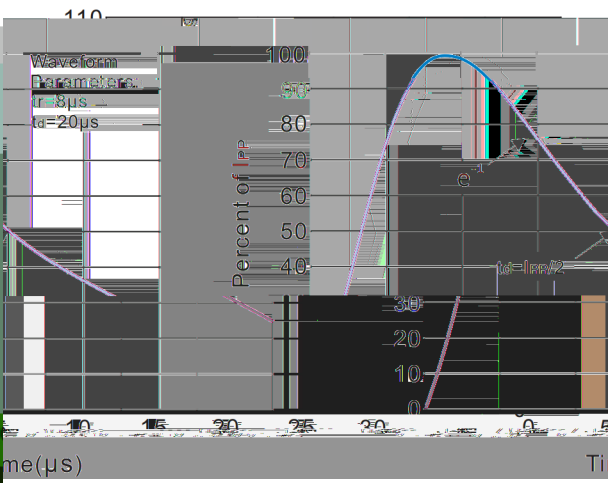


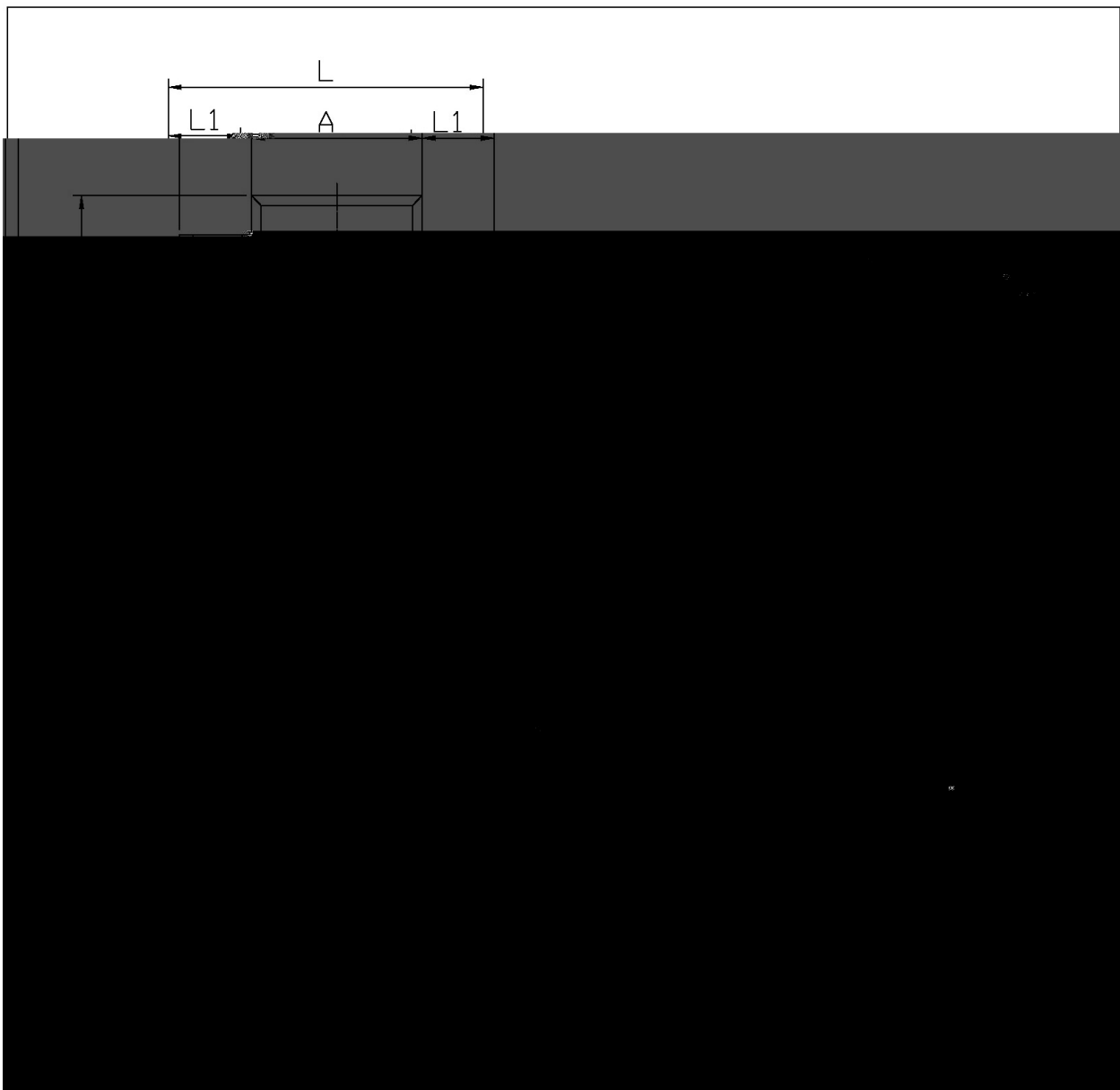
Fig.2 Pulse Waveform



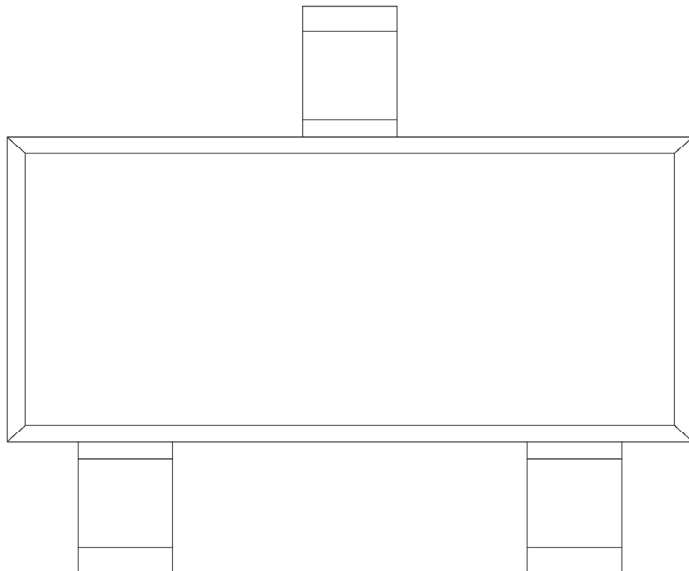
/ Package Dimensions

SOT-23

单位: mm

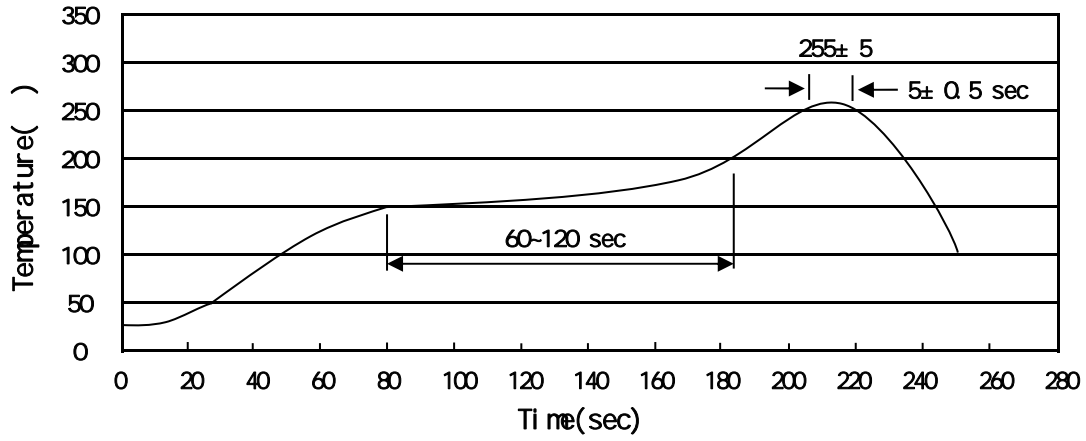


/ Marking Instructions



C24

( ) /



± ± ± ±

/ Resistance to Soldering Heat Test Conditions

± ±

/ Packaging SPEC.


/ Notices