

# BRDTA144EUAQ

Rev.A Mar.-2023



DATA SHEET

SOT-323

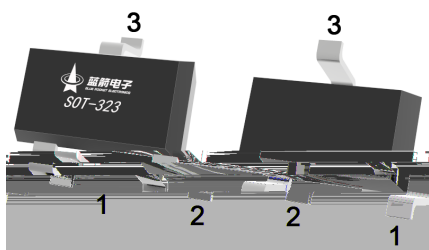
PNP

Silicon PNP Digital Transistor in a SOT-323 Plastic Package.

AEC-Q101

With built-in bias resistors, simplify circuit design, reduce a quantity of parts and manufacturing process, Qualified to AEC-Q101 Standards for High Reliability, HF Product.

Switching, Inverter circuit, Interface circuit and driver circuit applications, Meet the stringent requirements of automotive applications.



PIN 1

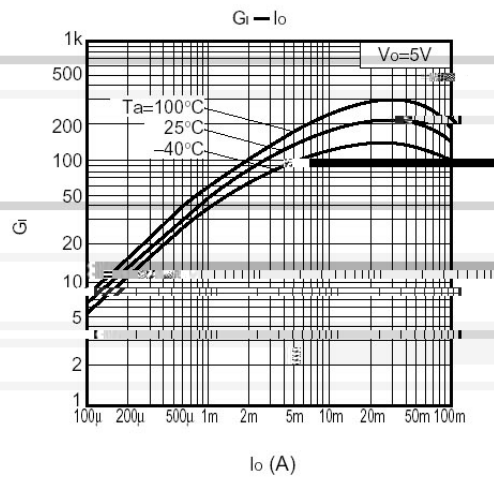
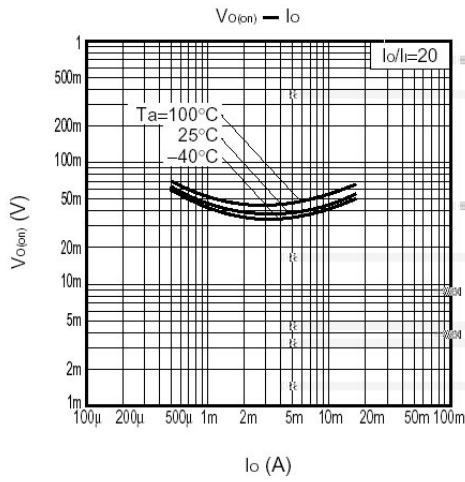
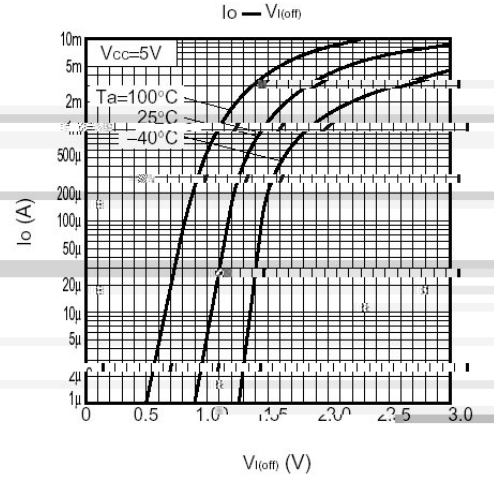
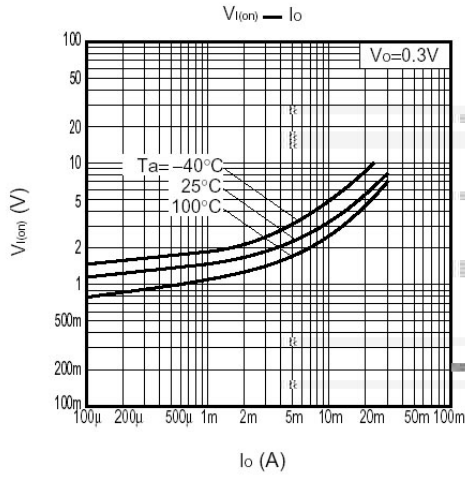
/ Absolute Maximum Ratings( $T_a=25$  )

Parameter	Symbol	Rating	Unit
Output Voltage	$V_{CC}$	-50	V
Input Voltage	$V_{IN}$	-40	V
		10	V
Output Current	$I_C$	-100	mA
	$I_O$	-30	mA
Collector Power Dissipation	$P_C$	200	mW
Junction Temperature	$T_j$	150	
Storage Temperature Range	$T_{stg}$	-55~150	

/ Electrical Characteristics( $T_a=25$  )

Parameter	Symbol	Test Conditions	Min	Typ	Max	Unit
Input Voltage	$V_{I(off)}$	$V_{CC}=-5.0V$ $I_O=-100\mu A$			-0.5	V
	$V_{I(on)}$	$V_O=-0.3V$ $I_O=-2.0mA$	-3.0			V
Output Voltage	$V_{O(on)}$	$I_O=-10mA$ $I_I=-0.5mA$		-0.1	-0.3	V
Input Current	$I_I$	$V_I=-5.0V$			-0.18	mA
Output Cut-off Current	$I_{O(off)}$	$V_{CC}=-50V$ $V_I=0V$			-0.5	$\mu A$
DC Current Gain	$G_I$	$V_O=-5.0V$ $I_O=-5.0mA$	68			
Transition Frequency	$f_T$	$V_{CE}=-10V$ $I_E=5.0mA$ $f=100MHz$		250		MHz
Resistance1	$R_1$		32.9	47	61.1	K
Resistance Ratio	$R_2/R_1$		0.8	1.0	1.2	

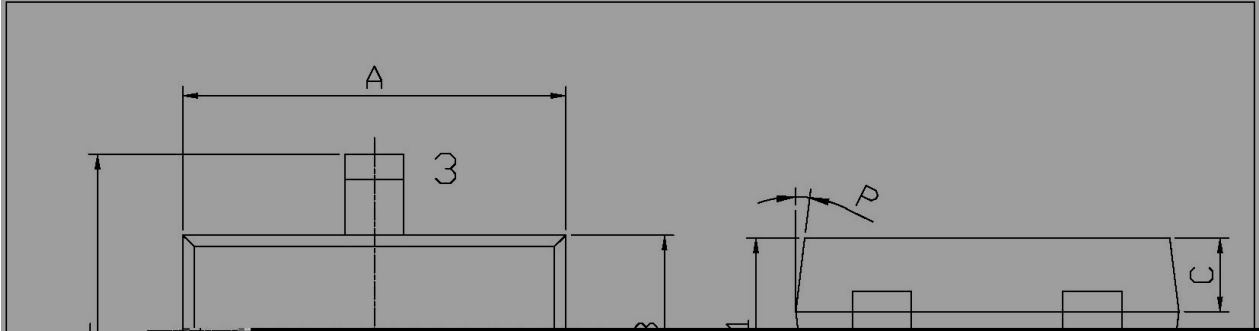
**/ Electrical Characteristic Curve**



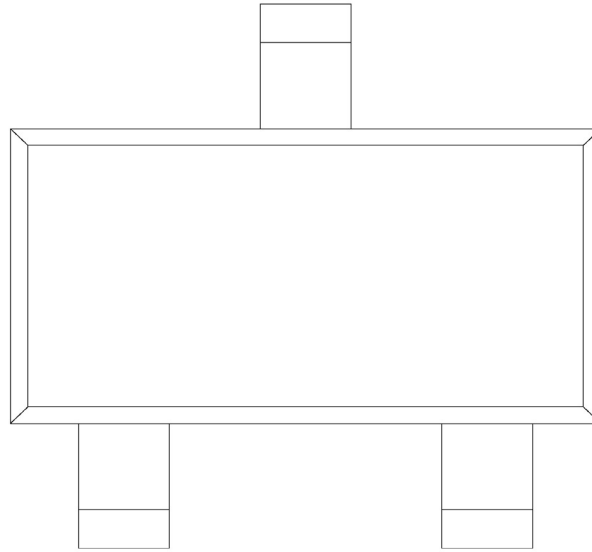
/ Package Dimensions

SOT-323

单位:  $\mu\text{m}$



/ Marking Instructions



Q

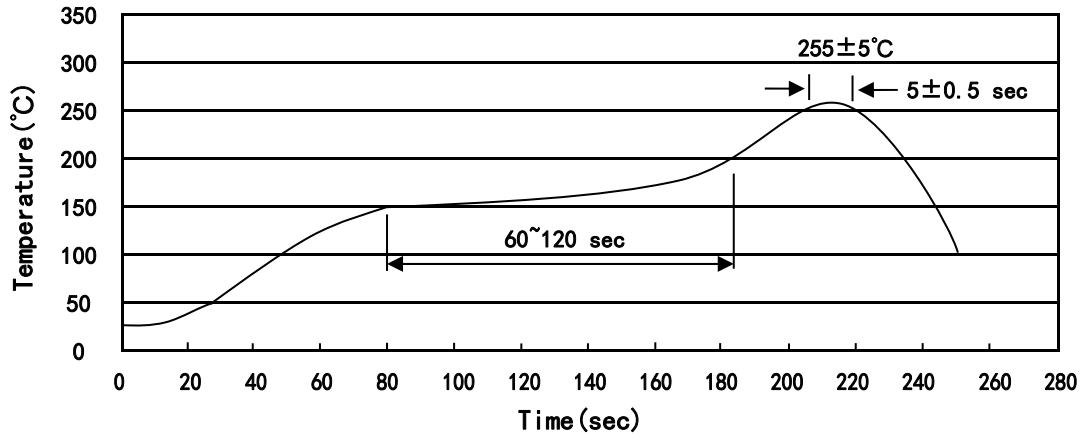
16

Note:

Q: Automobile halogen-free product Code

16

( ) / Temperature Profile for IR Reflow Soldering(Pb-Free)



Note:

- 1            150 200            60 120sec;    1.Preheating:150~200 , Time:60~120sec.
- 2            255±5                    5±0.5sec;    2.Peak Temp.:255±5 , Duration:5±0.5sec.
- 3                            2 10 /sec.            3. Cooling Speed: 2~10 /sec.

/ Resistance to Soldering Heat Test Conditions

260±5                    10±1 sec.                    Temp:260±5                    Time:10±1 sec

/ Packaging SPEC.

/ REEL

Package Type 封装形式	Units 包装数量					Dimension 包装尺寸 (unit: mm <sup>3</sup> )		
	只卷盘	卷盘盒	只盒	盒箱	只箱		盒	箱
SOT-323	3,000	10	30,000	6	180,000	7" x8	180x120x180	390x385x205

/ Notices