

/ Descriptions

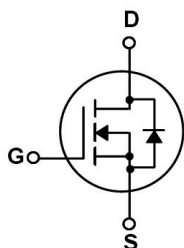
/ Features

$\leq \Omega$ Ω

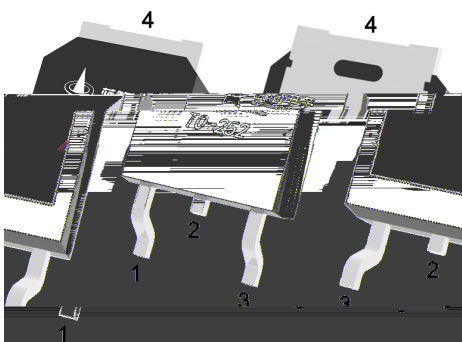
/ Applications

LED

/ Equivalent Circuit

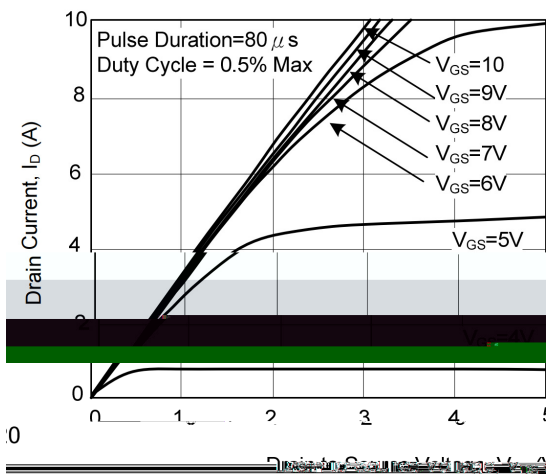
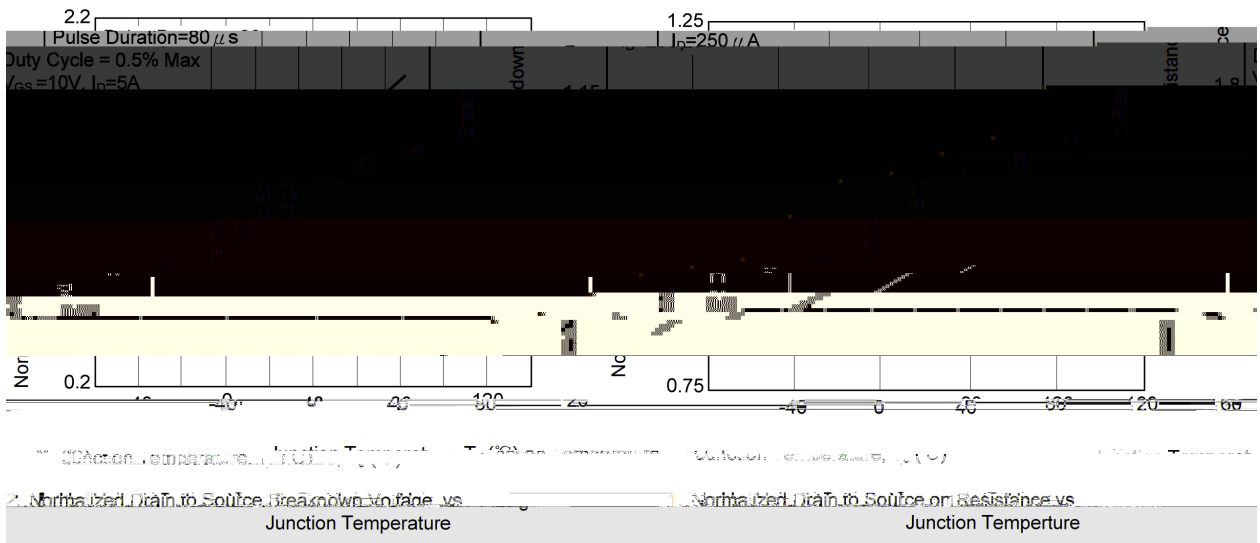


/ Pinning

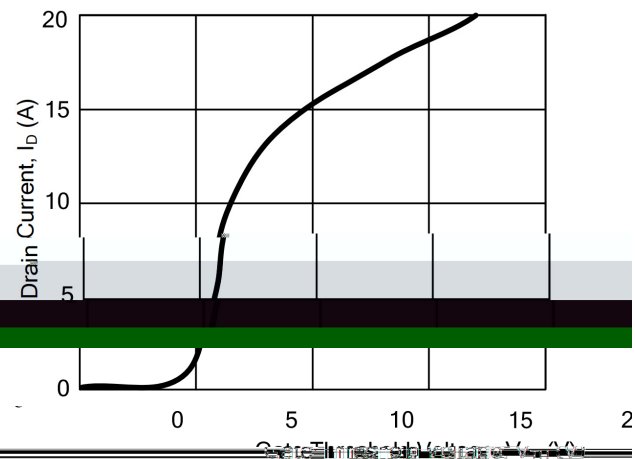


/ Marking

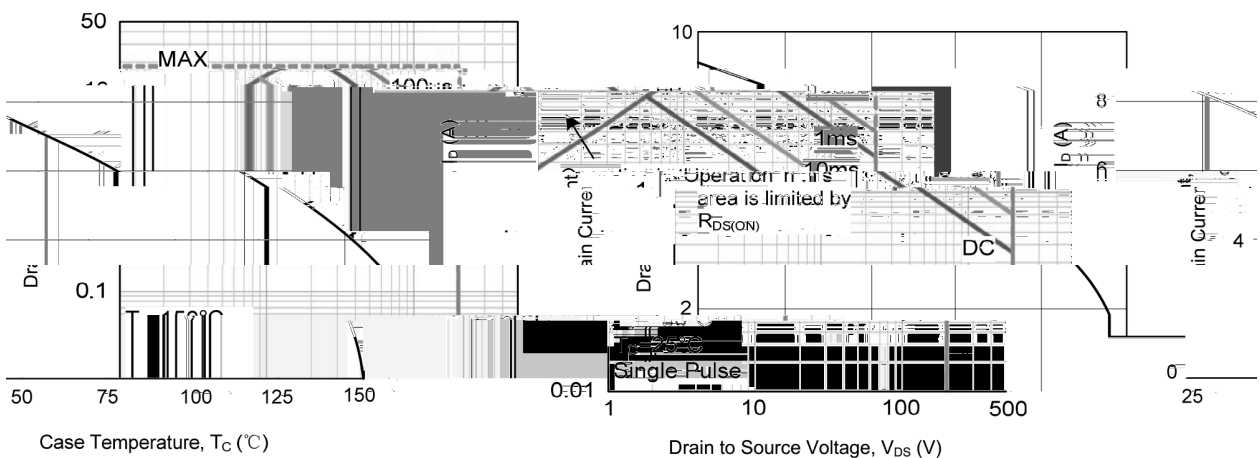
/ Electrical Characteristic Curve



3. Saturation Characteristics



4. Drain Current vs. Gate Threshold Voltage

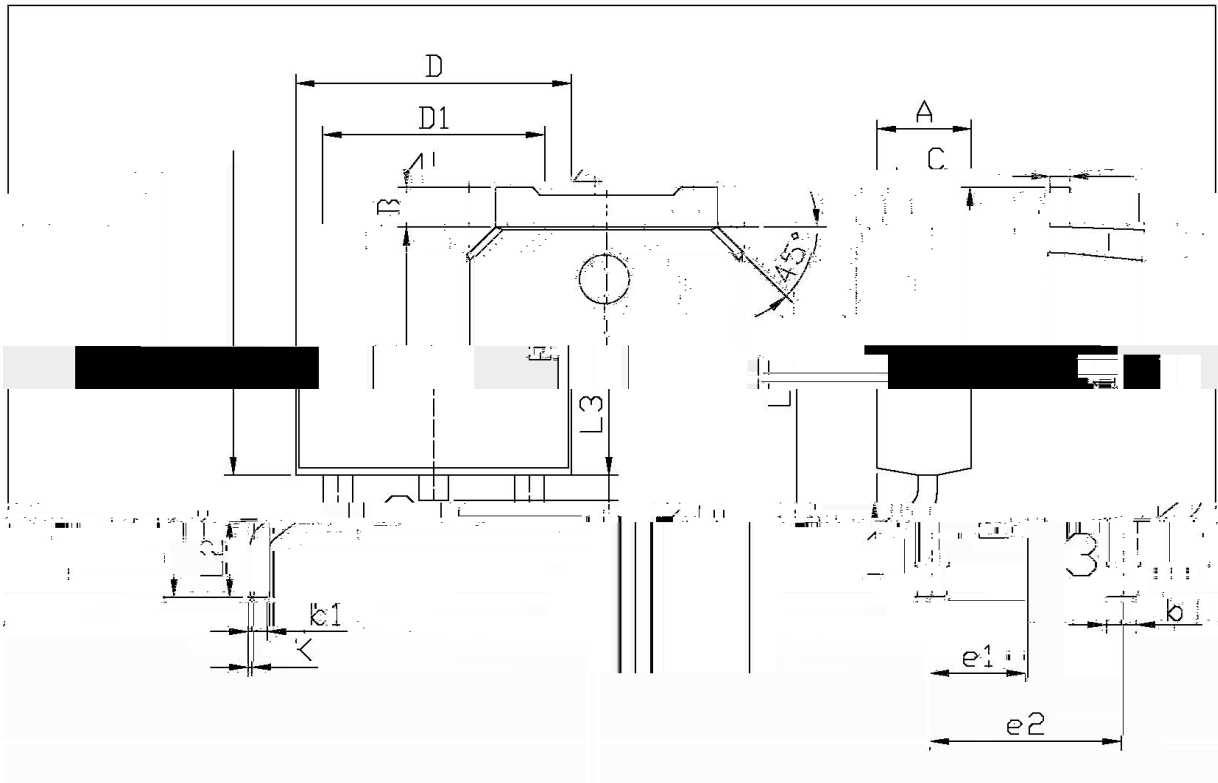


Maximum Continuous Drain Current vs. Case Temperature

5. Forward Bias Safe Operating Area

6. Ma

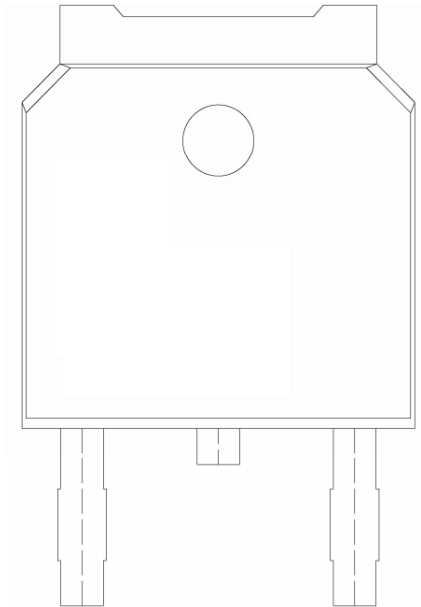
/ Package Dimensions



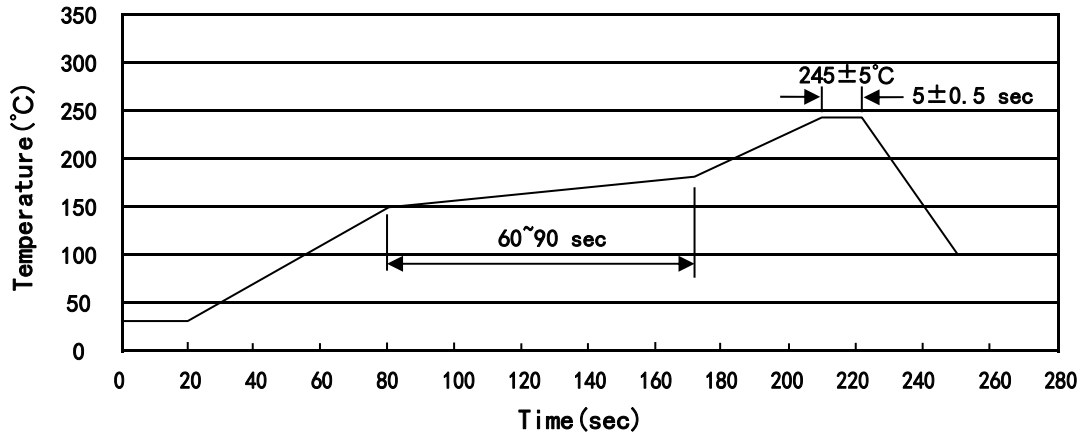
单位: mm

Symbol	Dimensions In Millimeters		Symbol	Dimensions In Millimeters	
	Min	Max		Min	Max
A	6.25	7.25	e1	2.24	2.34
B	0.95	1.25	e2	4.43	4.73
C	0.75	0.90	L1	9.85	10.35
D	0.45	0.55	L2	1.2	1.70
D1	6.45	6.75	L3	0.60	0.90

TO-252



() /



± ± ± ±

/ Resistance to Soldering Heat Test Conditions

± ±

/ Packaging SPEC.

/ Notices