

/ Descriptions

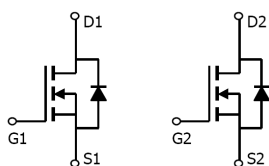
SOP-8 N MOS

/ Features

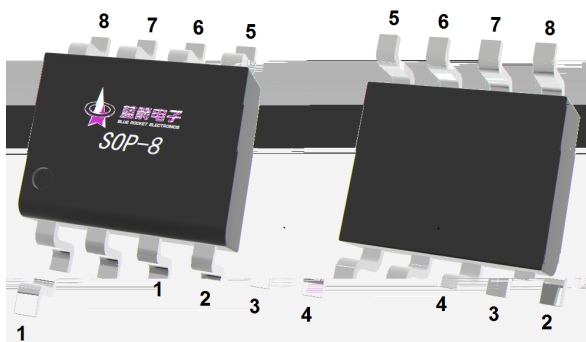
AEC-Q101

/ Applications

/ Equivalent Circuit



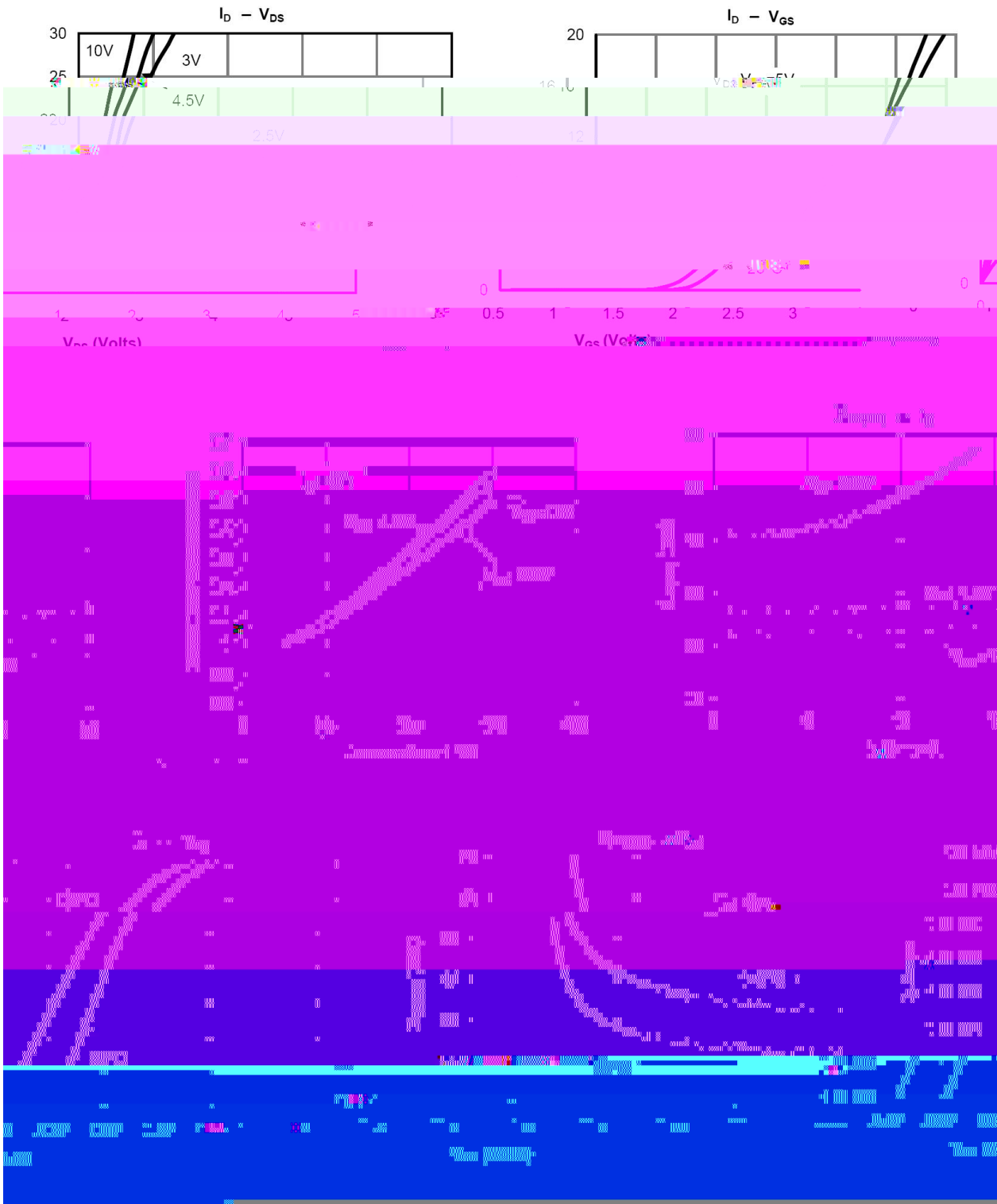
/ Pinning



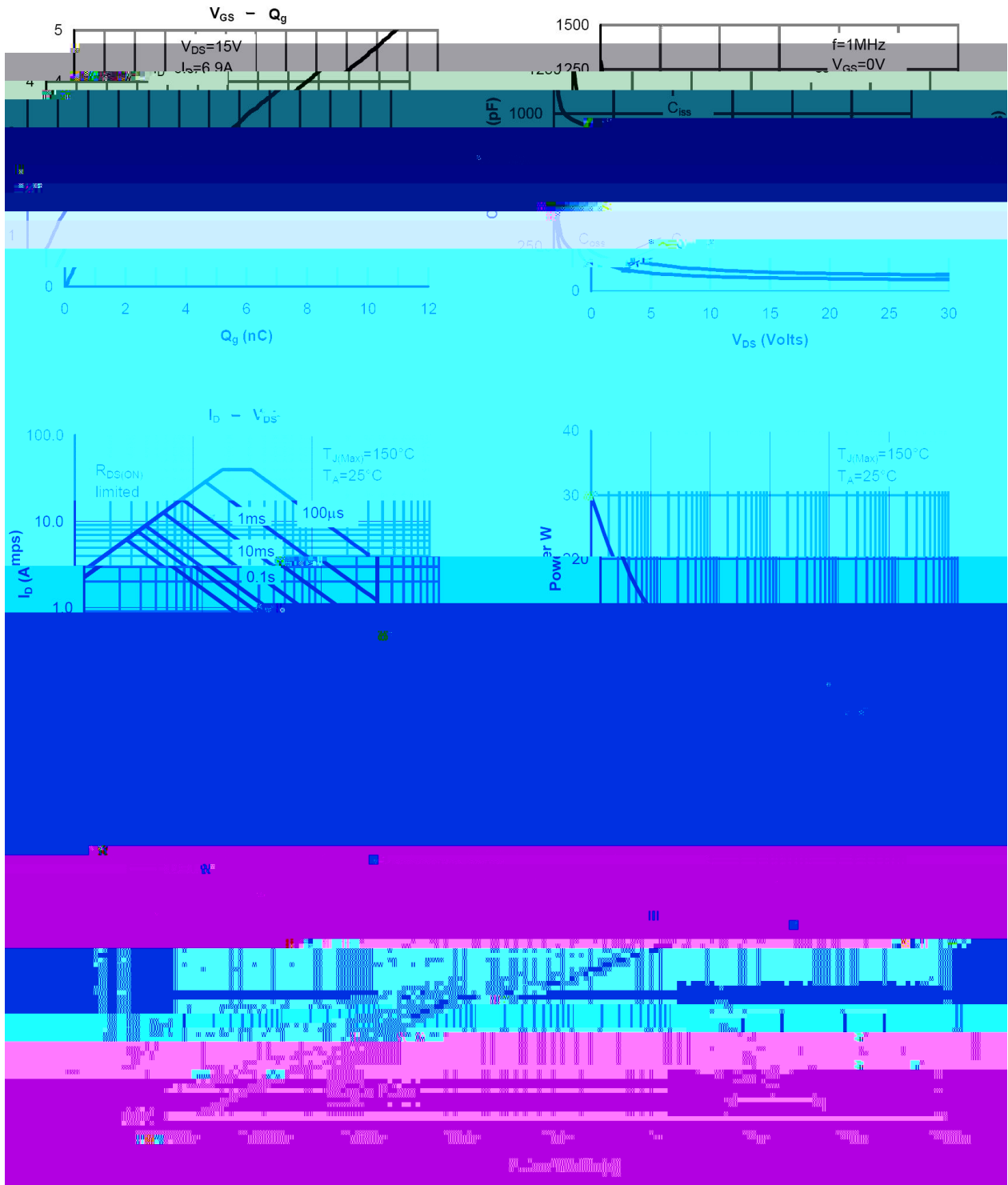
/ Marking

			°C
			°C
			°C
			°C

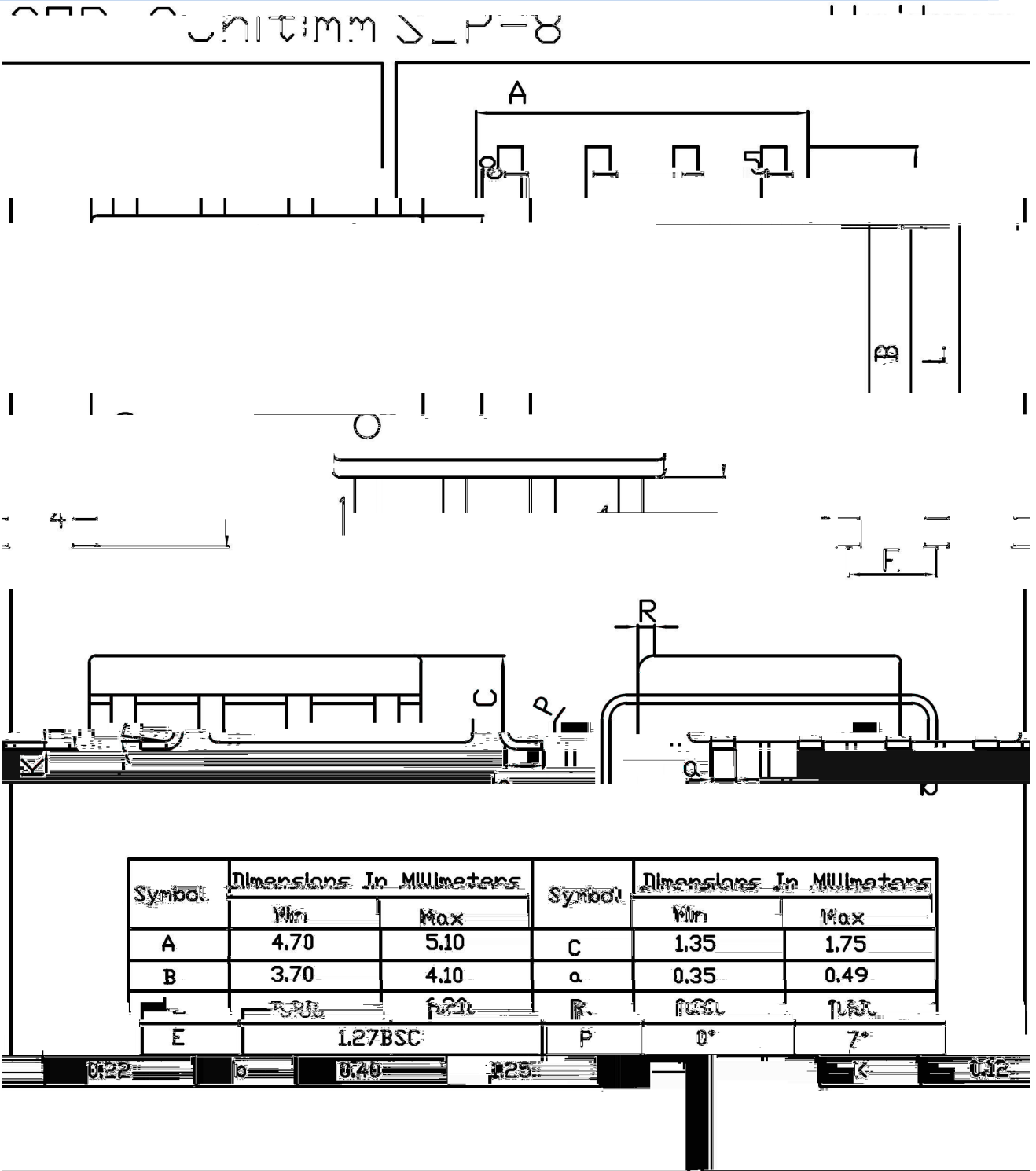
/ Electrical Characteristic Curve



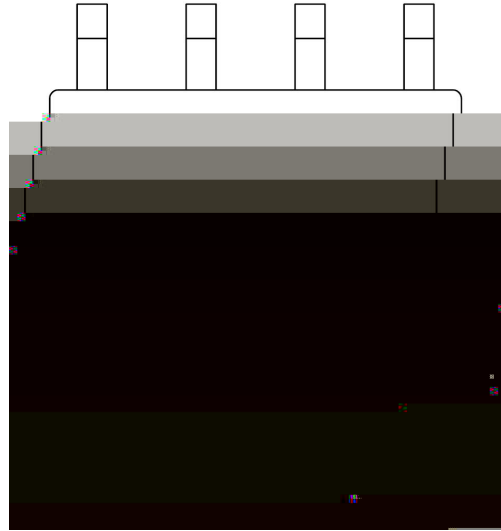
Electrical Characteristic Curve



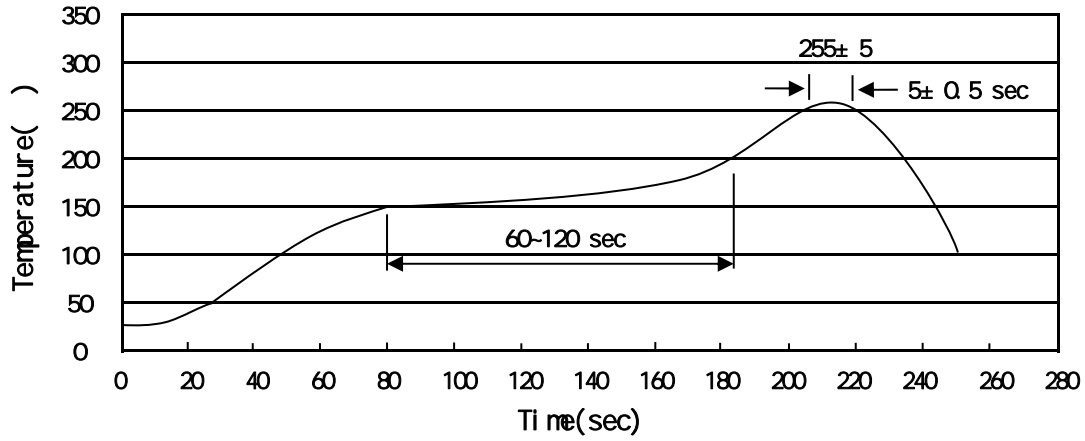
/ Package Dimensions



/ Marking Instructions



() /



±

±

±

±

/ Resistance to Soldering Heat Test Conditions

±

±

/ Packaging SPEC.

	Units/Reel	Reels/Inner Box	Units/Inner Box	Inner Boxes/Outer Box	Units/Outer Box	Reel	Inner Box	Outer Box
	/	/	/	/	/			

/ Notices