

Rev.A May.-2023

PDFN5 6A N

Dual N-CHANNEL MOSFET in a PDFN5x6A Plastic Package.

Dual N-Ch

$V_{DS}(V)=30V$

$I_D=33A$

$R_{DS(ON)}<12m\Omega(V_{GS}=10V)$

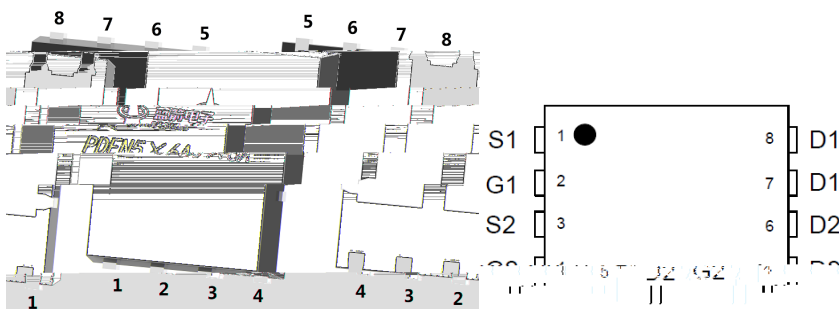
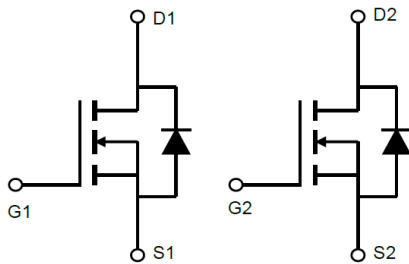
$R_{DS(ON)}<20m\Omega(V_{GS}=4.5V)$

HF Product.

PWM

LED

PWM Application, Load Switch, Power Management, Dimming LED.

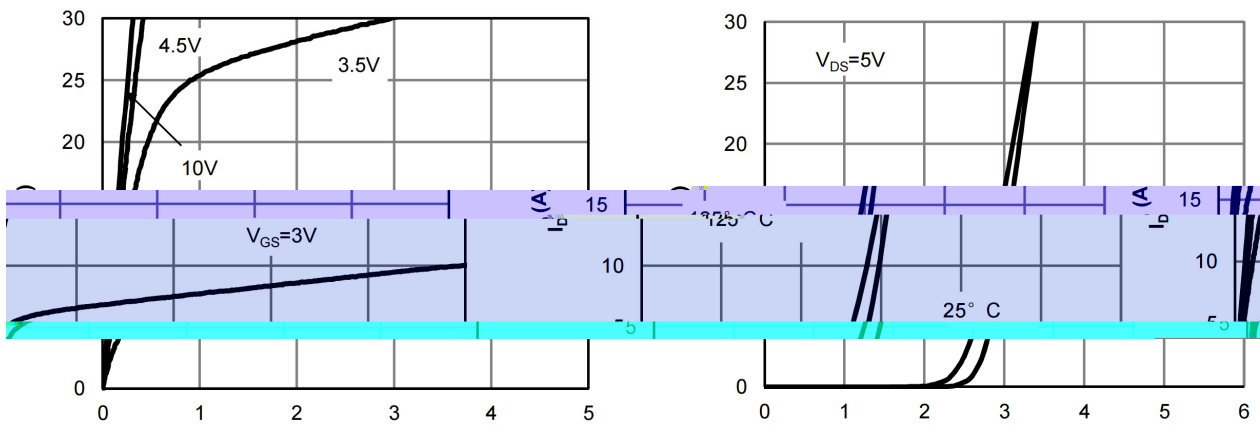
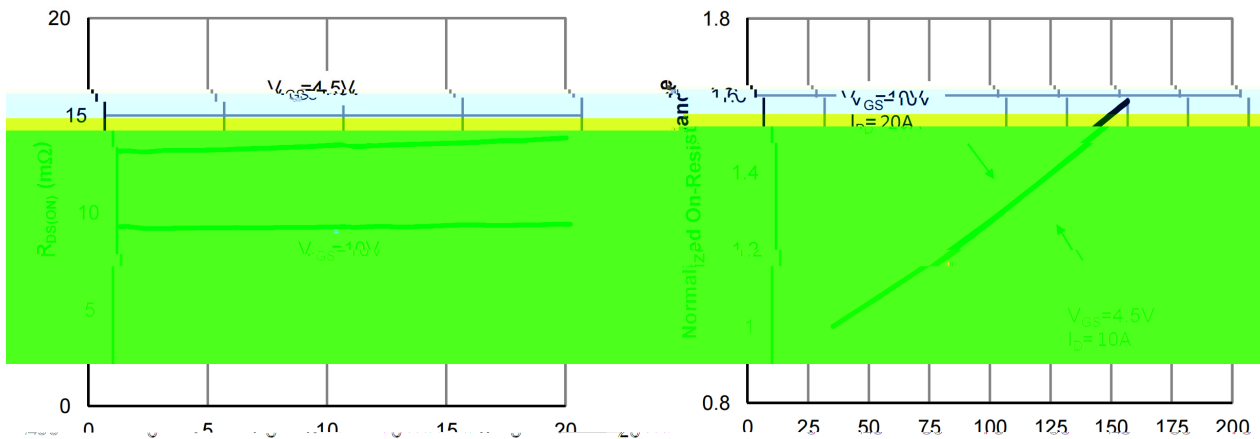
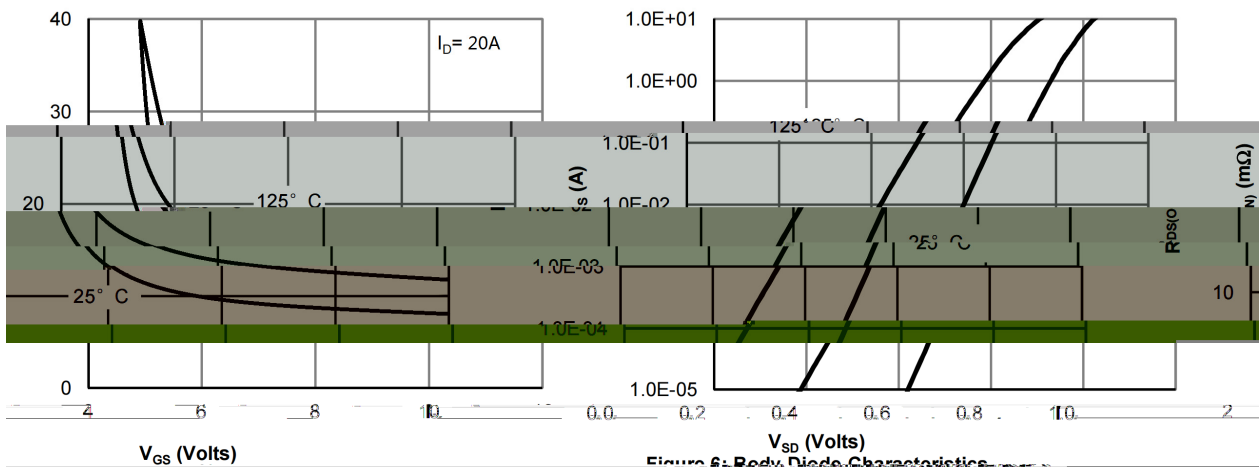


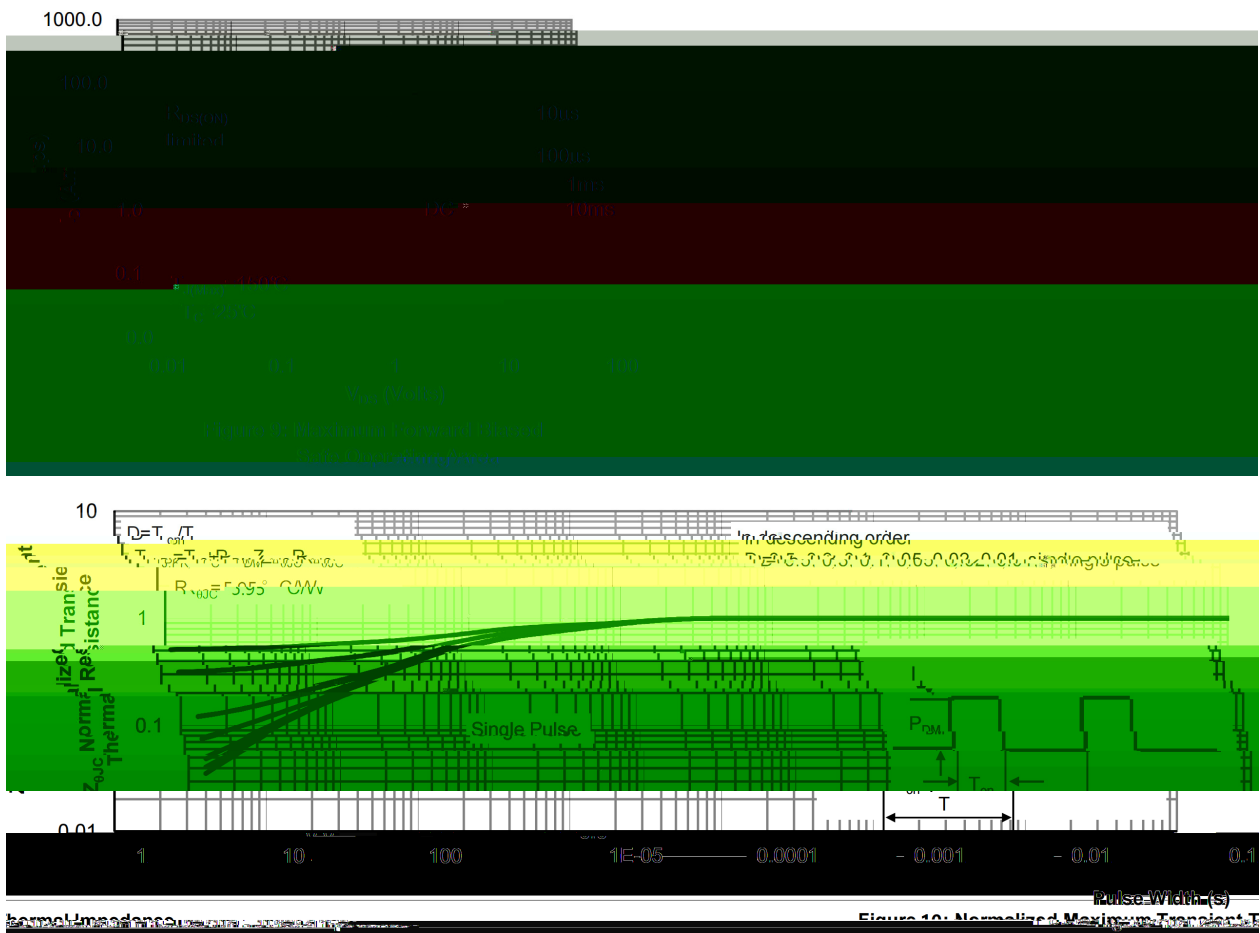
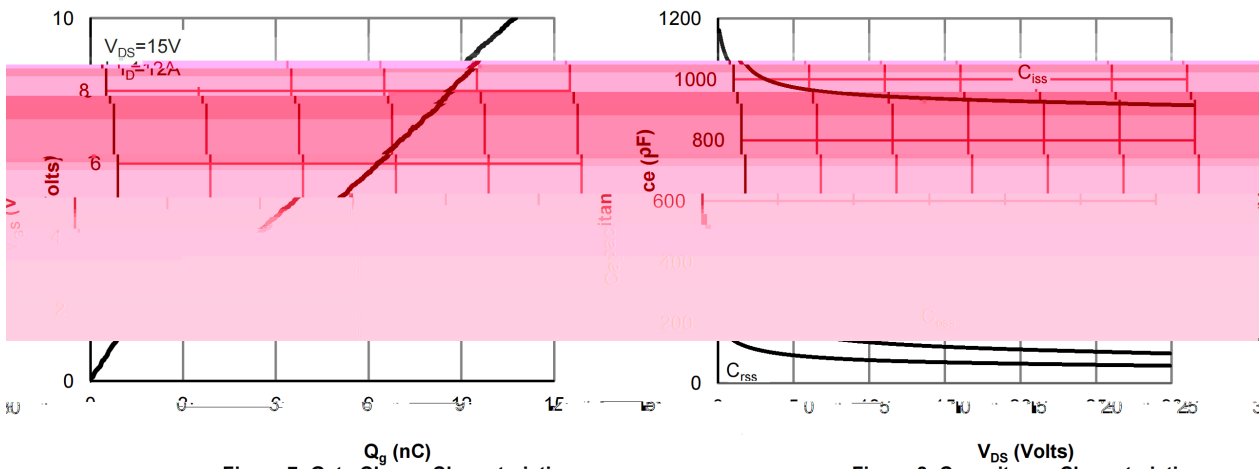
See Marking Instructions.

Parameter	Symbol	Rating	Unit
Drain-Source Voltage	V_{DSS}	30	V
Drain Current	$I_D(T_C=25^\circ\text{C})$	33	A
Drain Current - Pulsed	I_{DM}	104	A
Gate-Source Voltage	V_{GSS}	± 20	V
Single Pulsed Avalanche Energy	E_{AS}	115	mJ
Avalanche Current	I_{AS}	17	A
Power Dissipation	$P_D(T_C=25^\circ\text{C})$	21	W
Operating and Storage Temperature Range	T_J, T_{stg}	-55 to 150	
Junction-to-Ambient $t \leq 10\text{s}$	$R_{\theta JA}$	t_J	

t

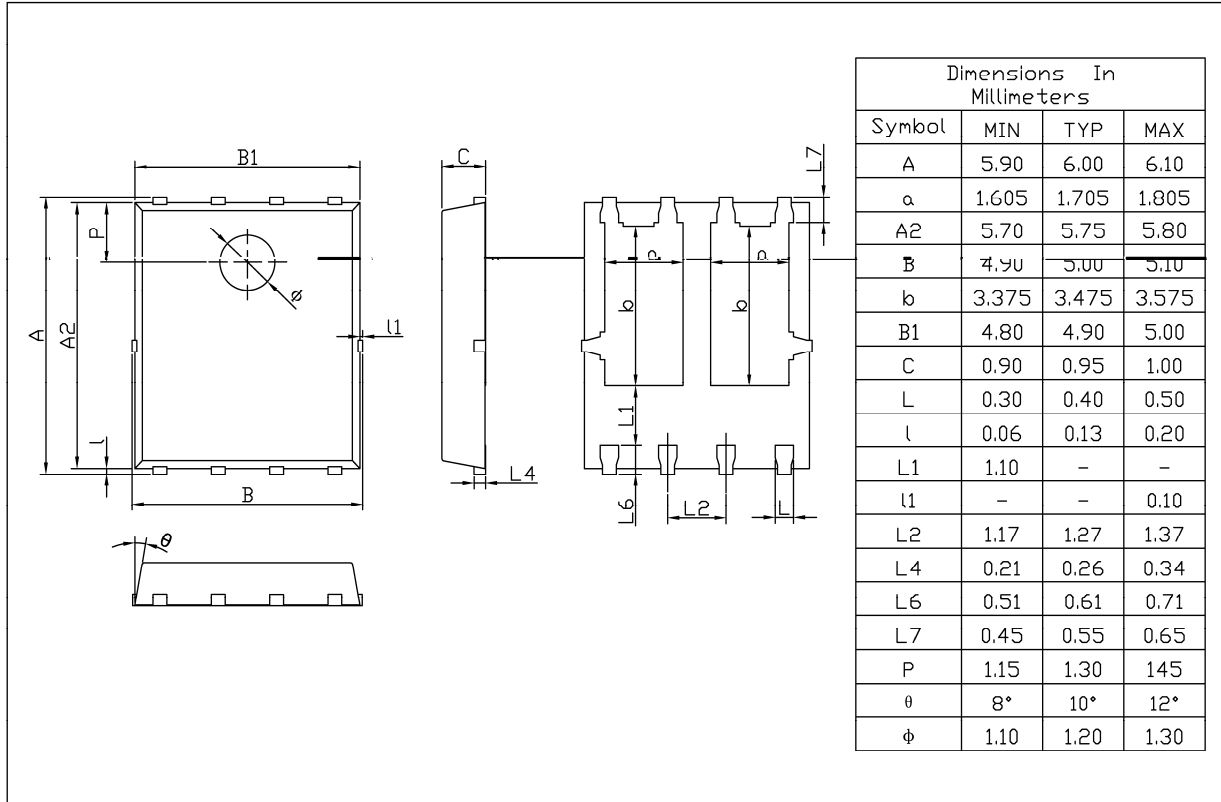
Parameter	Symbol	Test Conditions	Min	Typ	Max	Unit
Turn-On Delay Time	$t_{d(on)}$	$V_{GS}=10V$ $V_{DS}=15V$ $R_L=1.25\Omega$ $R_{GEN}=3\Omega$		4.5		ns
Turn-On Rise Time	t_r			10		


Figure 3: On-Resistance vs. Drain Current and Gate Voltage

Figure 4: On-Resistance vs. Junction Temperature

Figure 5: On-Resistance vs. Gate-Source Voltage
Figure 6: Body Diode Characteristics

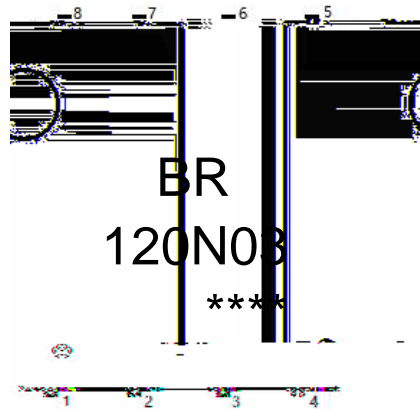


PDFN5 X6A

Unit:mm



Rev.01 202209



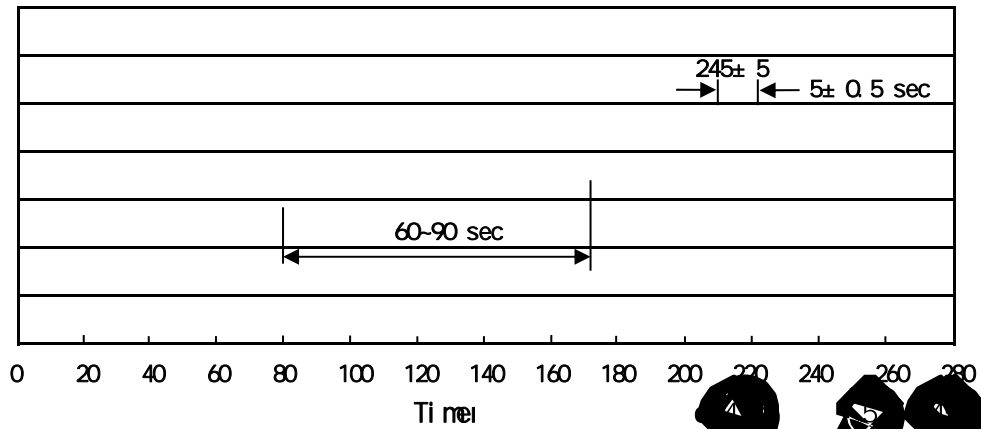
120N03

Note

BR Company Code

120N03 Product Type Code

****: Lot No. Code, code change with Lot No



Note:

- | | | | | | |
|---|-----|-----|----|----------|---|
| 1 | 150 | 180 | 60 | 90sec; | 1.Preheating:150~180 , Time:60~90sec. |
| 2 | 245 | 5 | 5 | 0.5sec; | 2.Peak Temp.:245 5 , Duration:5 0.5sec. |
| 3 | | | 2 | 10 /sec. | 3. Cooling Speed: 2~10 /sec. |

260	5	10	1 sec.	Temp.:260±5	Time:10±1 sec
-----	---	----	--------	-------------	---------------

/ REEL

Package Type	Units					Dimension (unit mm ³)		
	Units/Reel	Reels/Inner Box	Units/Inner Box	Inner Boxes/Outer Box	Units/Outer Box	Reel	Inner Box	Outer Box
PDFN5x6A	5,000	2	10,000	6	60,000	13"x12	360x360x50	380x335x366