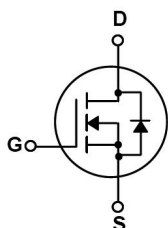


/ Descriptions

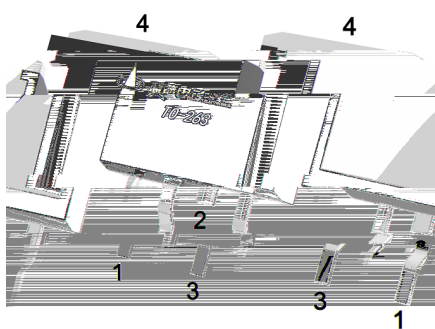
/ Features

/ Applications

/ Equivalent Circuit



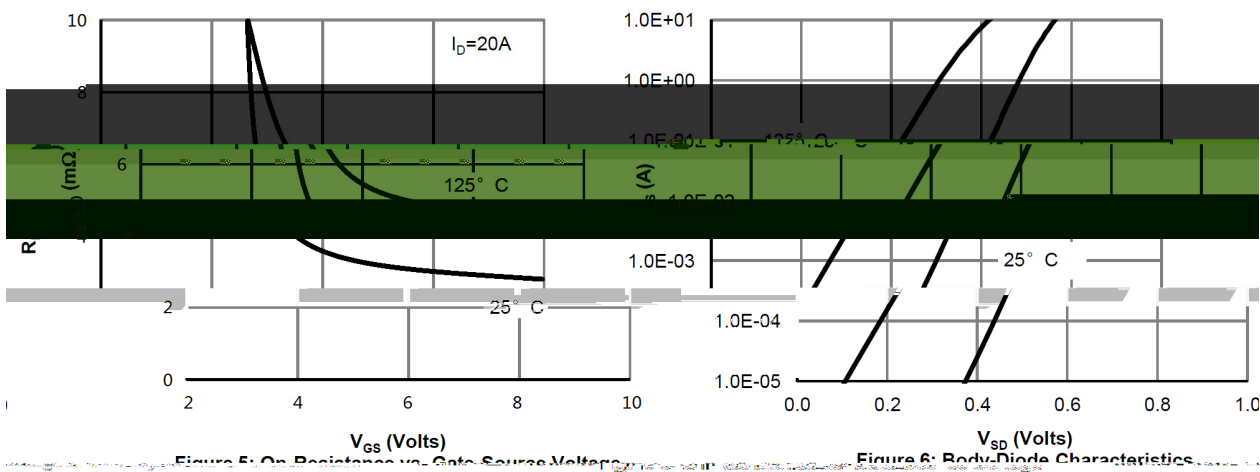
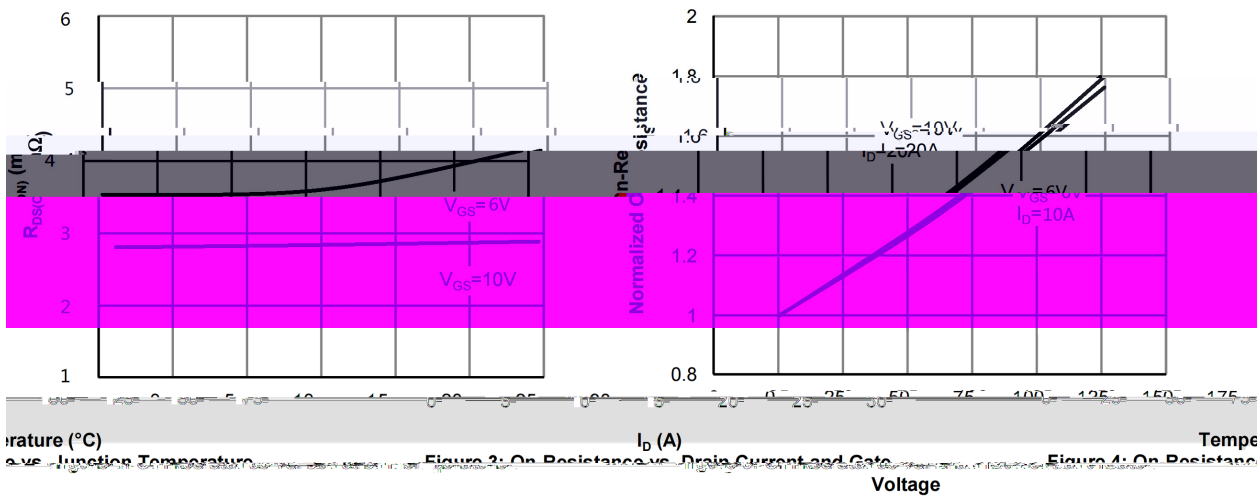
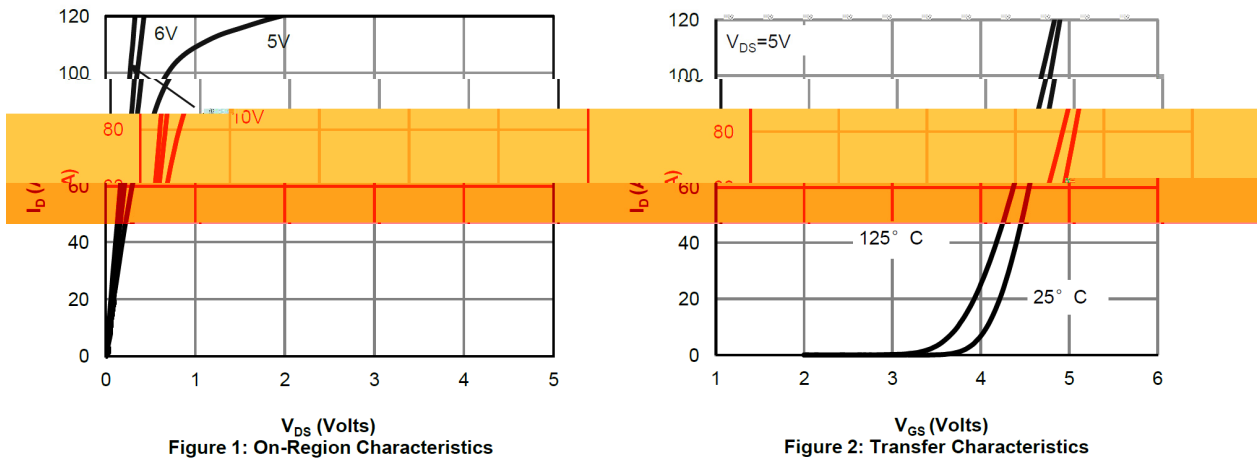
/ Pinning



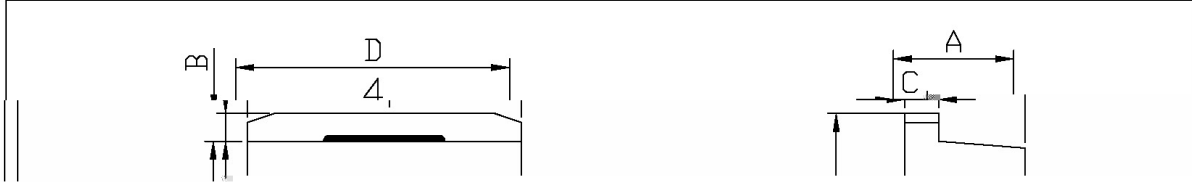
/ Marking

/ Electrical Characteristics(Ta=25)

/ Electrical Characteristic Curve



/ Package Dimensions

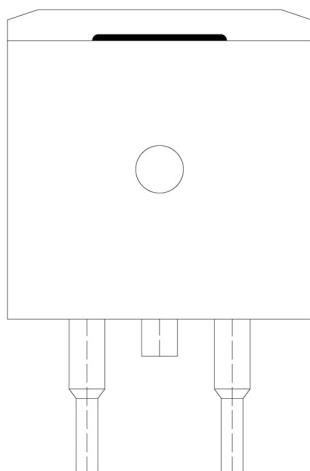


单位: mm

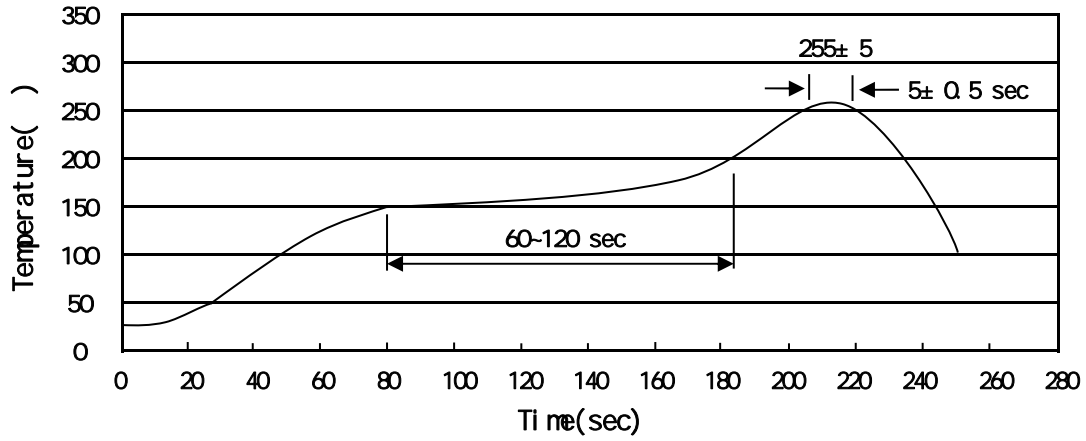
Symbol	Dimensions in Millimeters		Symbol	Dimensions in Millimeters	
	Min	Max		Min	Max
A	4.30	4.70	E	9.00	9.40
B	1.00	1.40	e1	2.34	2.74
b	0.70	0.90	e2	4.88	5.28
b1	1.15	1.35	L1	15.00	16.00
b2	0.40	0.60	L2	2.21	2.41
C	1.20	1.40	L3	1.20	
D	9.80	10.20			

TI-263

/ Marking Instructions



() / □ □ IF □ P d



/ Resistance to Soldering Heat Test Conditions

/ Packaging SPEC.

	Units/Reel	Reels/Inner Box	Units/Inner Box	Inner Boxes/Outer Box	Units/Outer Box	Reel	Inner Box	Outer Box
	/	/	/	/	/			

	Units/Tube	Tubes/Inner Box	Units/Inner Box	Inner Boxes/Outer Box	Units/Outer Box	Tube	Inner Box	Outer Box
	/	/	/	/	/			

/ Notices