

/ Absolute Maximum Ratings(Ta=25)

		±	
			°C

- ①
- ②
- ③

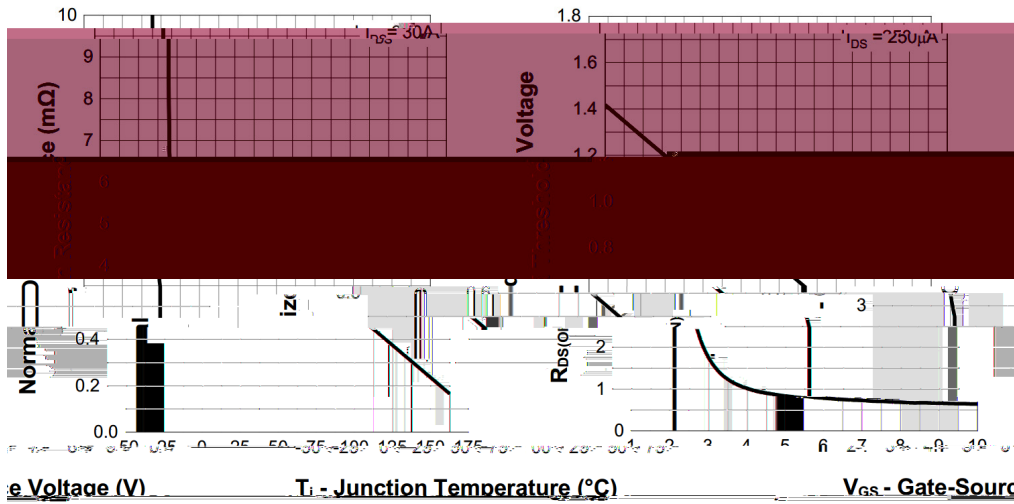
μ

/ Electrical Characteristics(Ta=25)

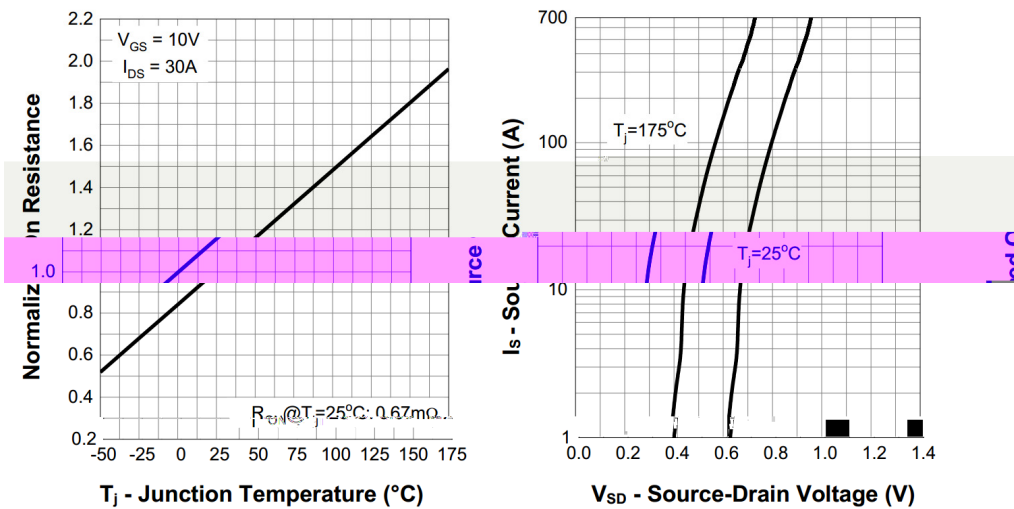
		μ				
						μ
					±	
		μ				
		μ				

BRCS007N06SSL

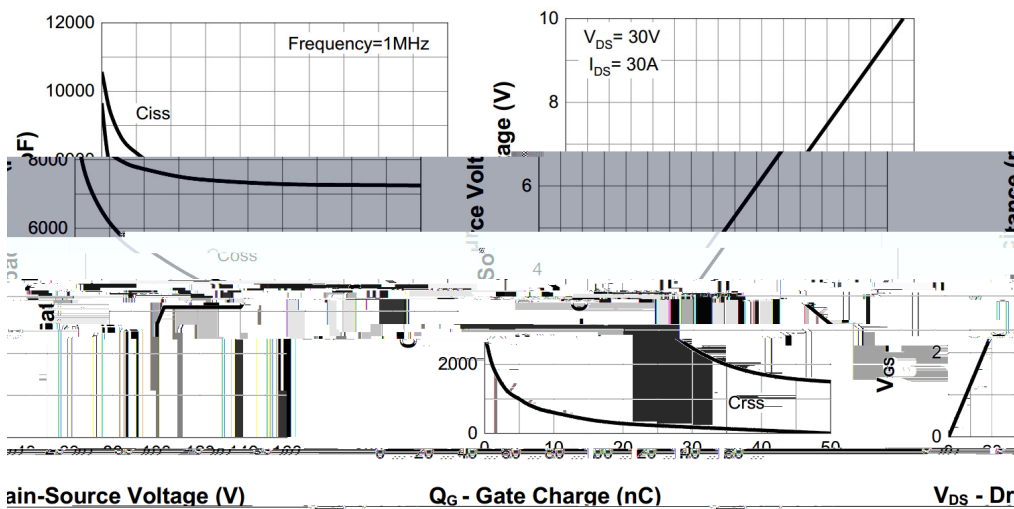
/ Electrical Characteristic Curve



7. Transfer Characteristics 8. Normalized Threshold

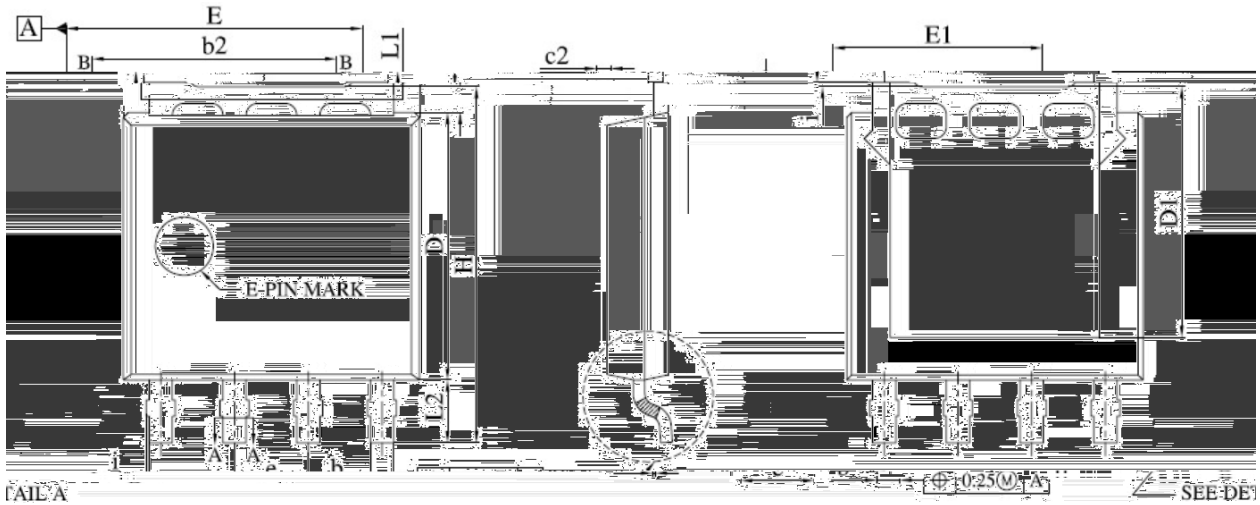


9. Normalized On Resistance 10. Diode Forward Current

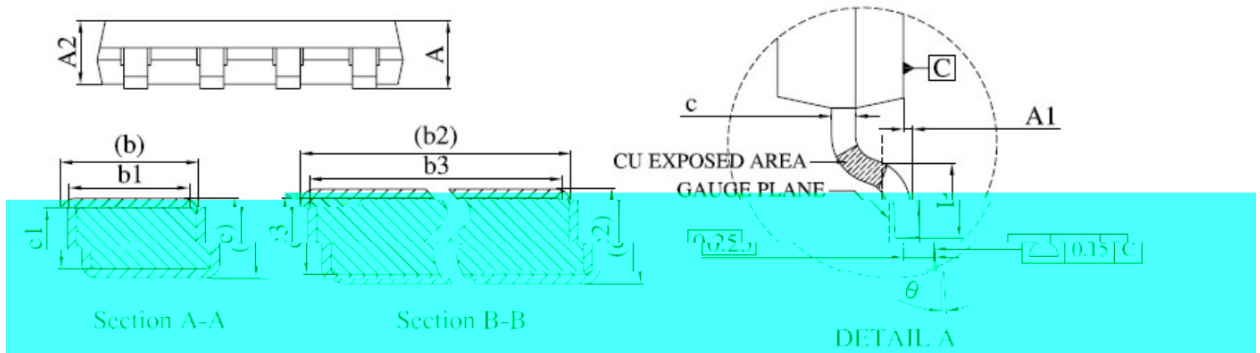


11. Capacitance 12. Gate Charge

/ Package Dimensions



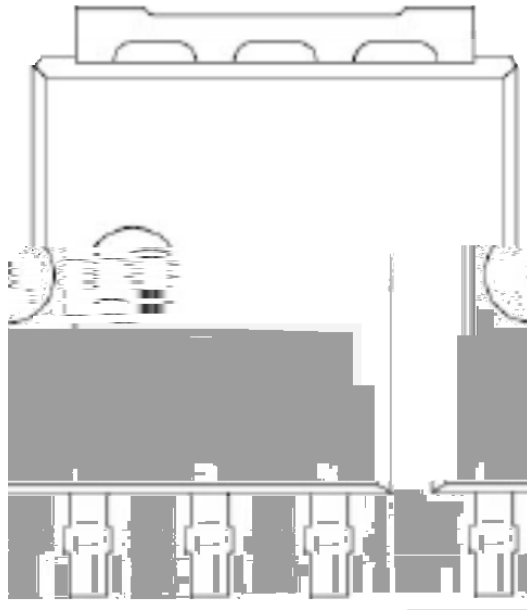
FA1/A $\phi \pm 0.25(M)$ SEE DET



Symbol	Dimensions In Millimeters	
	MIN.	MAX.
A	1.00	1.30
A1	0.00	0.15
A2	0.98	1.12
b	0.35	0.50
b1	0.32	0.46
b2	4.02	4.41
b3	4.00	4.37
c	0.19	0.25
c1	0.17	0.23
c2	0.24	0.30
$\overset{\sim}{3}$	0.22	0.28
D	4.45	4.70
D1	-	4.45

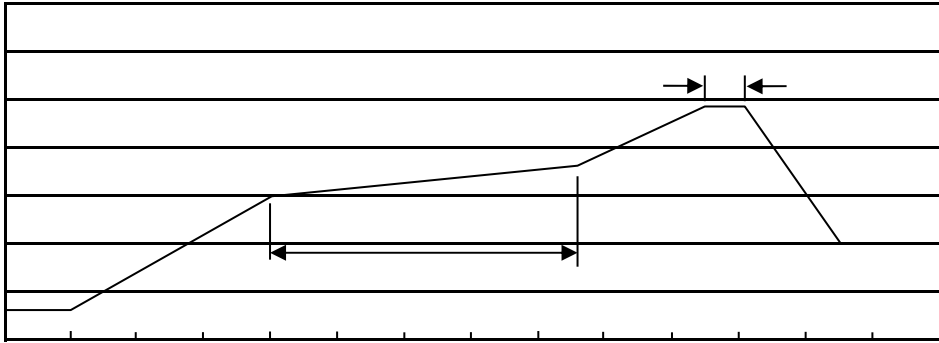
Symbol	Dimensions In Millimeters	
	MIN.	MAX.
E	4.95	5.30
E1	3.50	3.70
e	1.27 BSC.	
H	5.95	6.2
i	-	0.2
L	0.40	0.85
L1	0.27	0.57
L2	0.80	1.30
θ	0°	8°

/ Marking Instructions



BR

() / Temperature Profile for IR Reflow Soldering(Pb-Free)



± ± ± ±

/ Resistance to Soldering Heat Test Conditions

± ± °C

/ Packaging SPEC.

	/	/	/	/	/			

	/	/	/	/	/			

/ Notices