

## / Descriptions

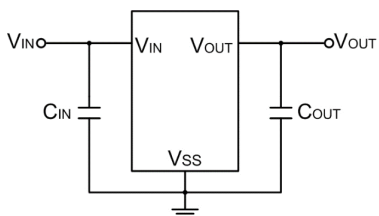
JOK\$/0

## / Features

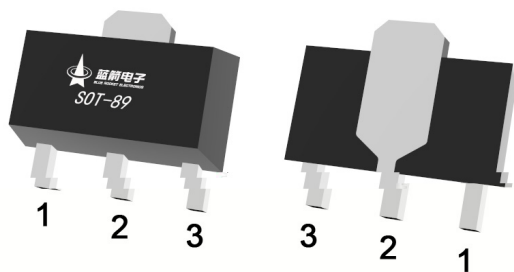
±

## / Applications

## / Equivalent Circuit



## / Pinning



## / Marking

**/ Absolute Maximum Ratings(Ta=25 )**

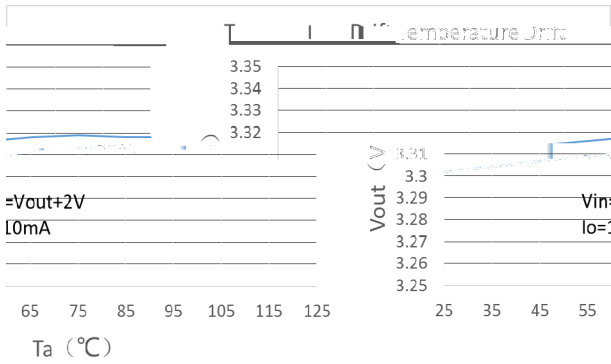
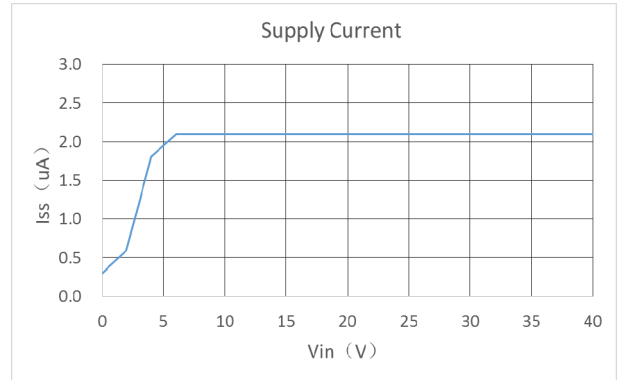
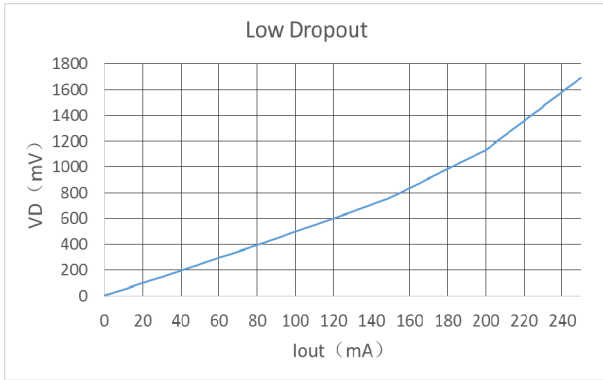
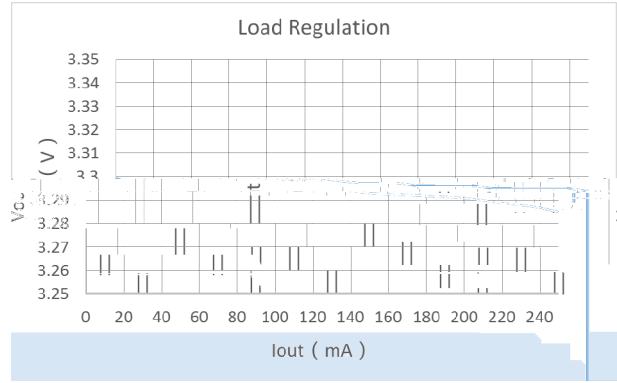
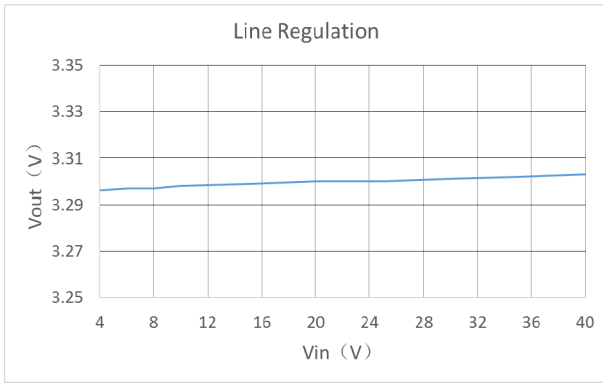

**/ Electrical Characteristics( TA=25 , VIN=VOUT+2V, CIN=COUT=1uF, unless otherwise specified)**


**BRCO7533HT**

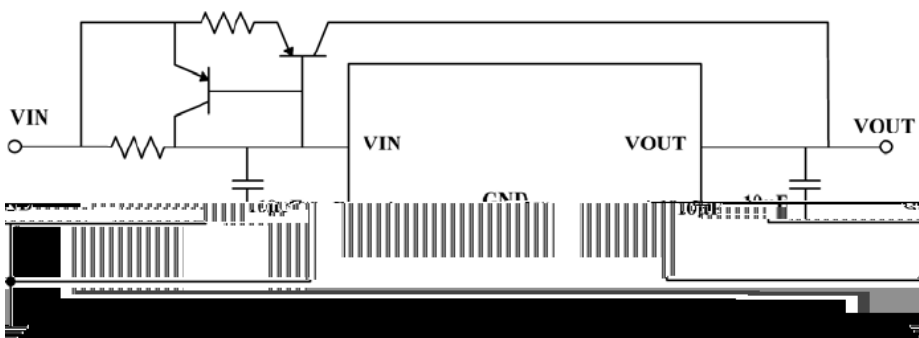
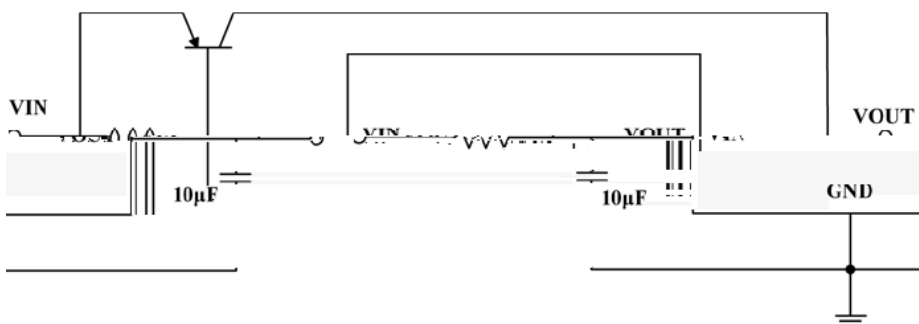
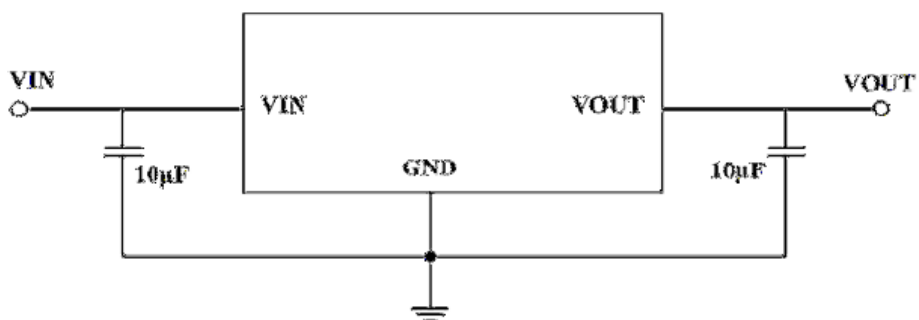


**DATA SHEET**

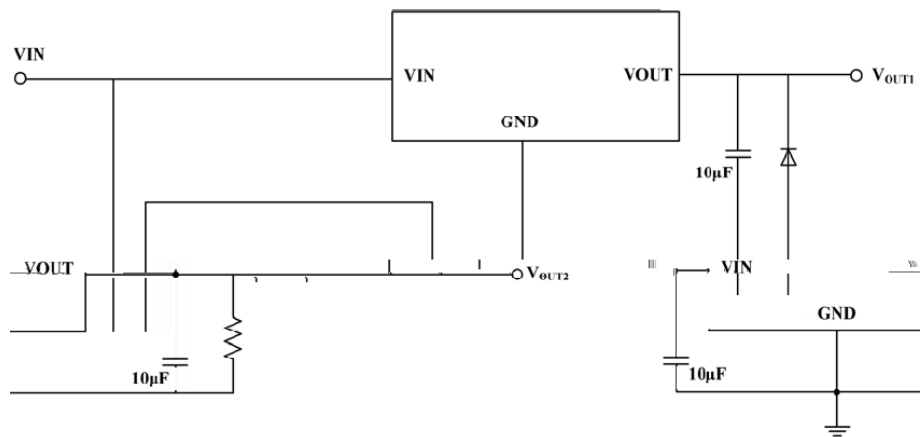
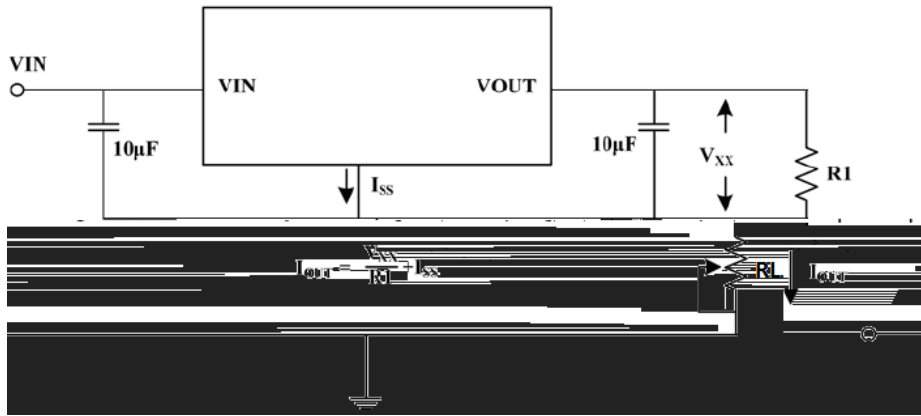
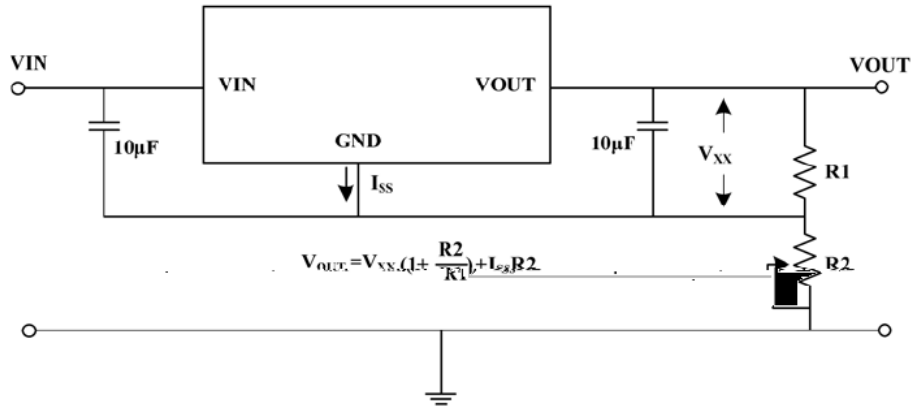
/ Electrical Characteristic Curve



/ Typical Application Circuit



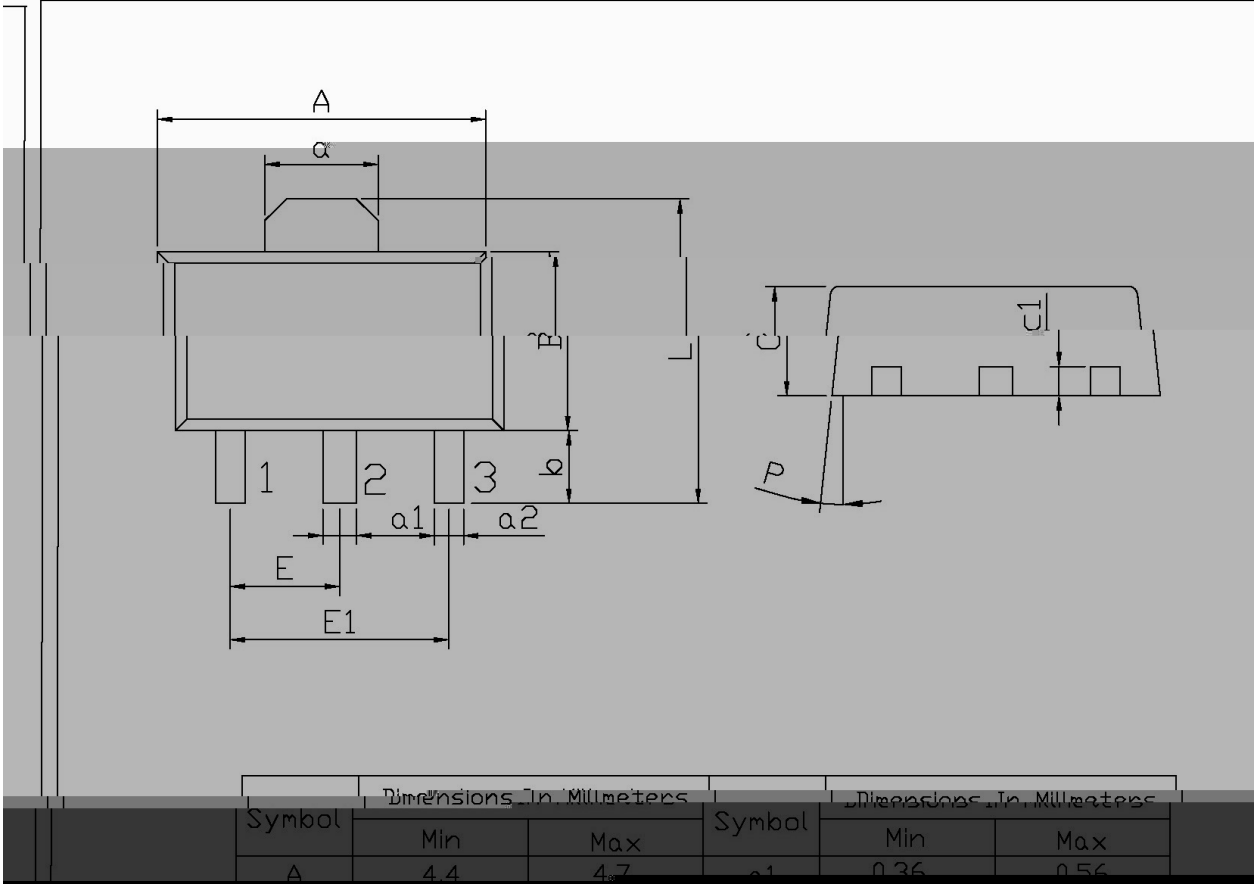
/ Typical Application Circuit



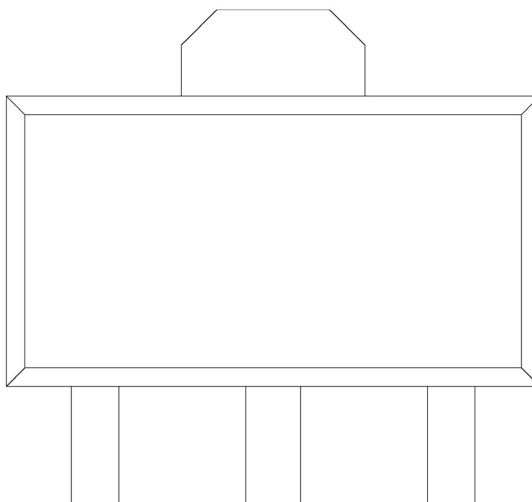
/ Package Dimensions

SMT-89

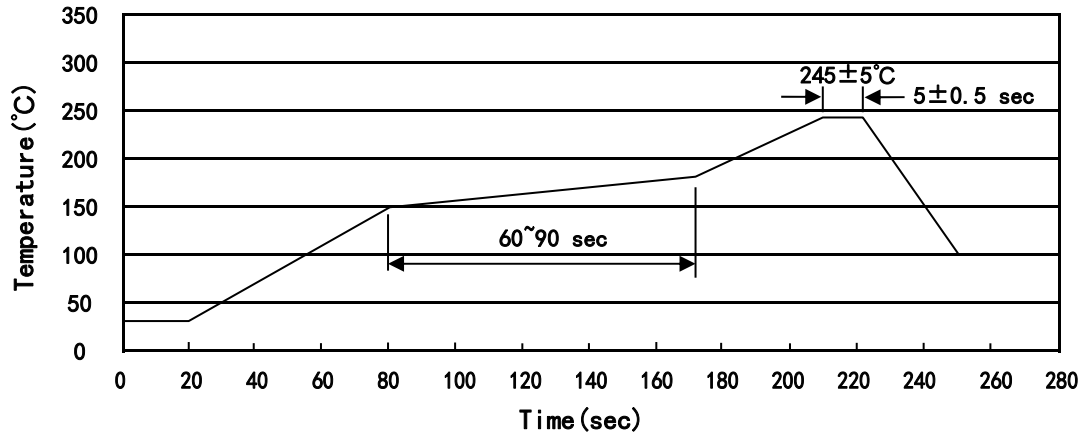
单位: mm



/ Marking Instructions



( ) / Temperature Profile for IR Reflow Soldering(Pb-Free)



± ± ± ±

/ Resistance to Soldering Heat Test Conditions

± ±

/ Packaging SPEC.

封装形式	包装数量					包装尺寸 :		
	Units/Reel 只/卷盘	Reels/Inner Box 卷盘/盒	Units/Inner Box 只/盒	Inner Boxes/Outer Box 盒/箱	Units/Outer Box 只/箱	Reel	Inner Box 盒	Outer Box 箱

/ Notices