

/ Descriptions

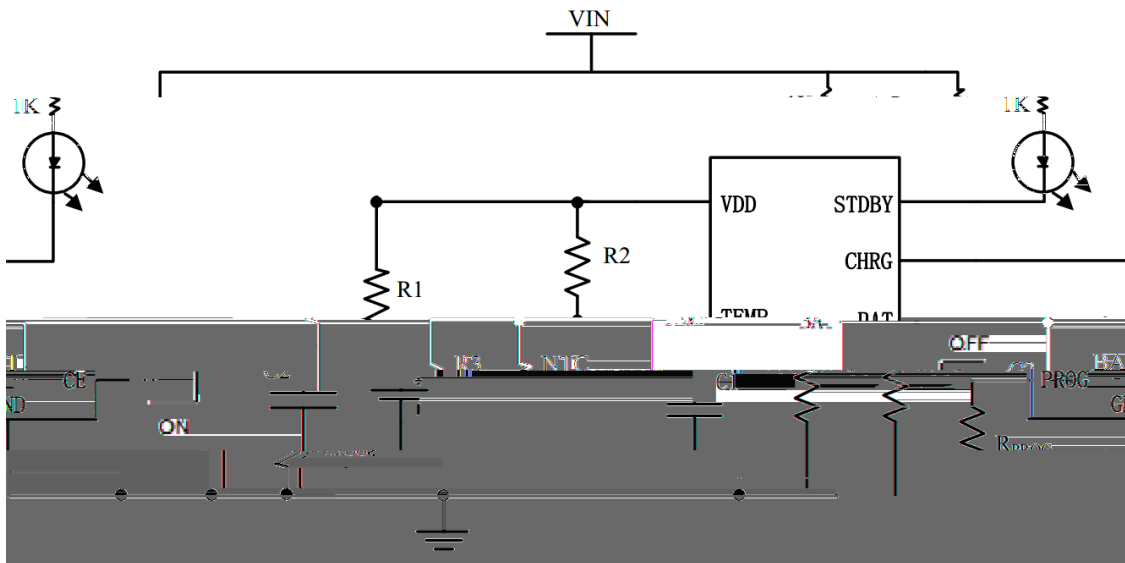
/ Features

- ◆
- ◆
- ◆
- ◆
- ◆
- ◆
- ◆
- ◆
- ◆
- ◆
- ◆
- ◆
- ◆
- ◆
- ◆

/ Applications

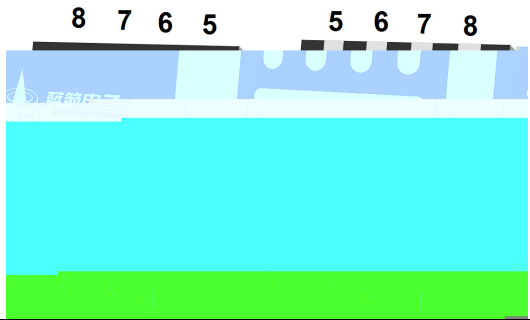
- ◆ LJ9
- ◆
- ◆
- ◆

/ Application Circuit



: JD; (\$' u= I JD; +%\$(' I

**/ Pinning**



PIN Num.	Symbol	Function
	GI F >	
		, M

**/ Absolute Maximum Ratings(Ta=25°C)**

PARAMETER	SYMBOL	RATINGS	UNITS

PARAMETER	SYMBOL	CONDITIONS	MIN	TYP	MAX	UNITS
<b>Power Suplly</b>						
						μ
						μ
						μ
<b>Charging Current Setting</b>						

PARAMETER	SYMBOL	CONDITIONS	MIN	TYP	MAX	UNITS
Indicator Pin Status CHRG/STDBY						

**BRCL4058NZR-4.2**



/ Function description

◆

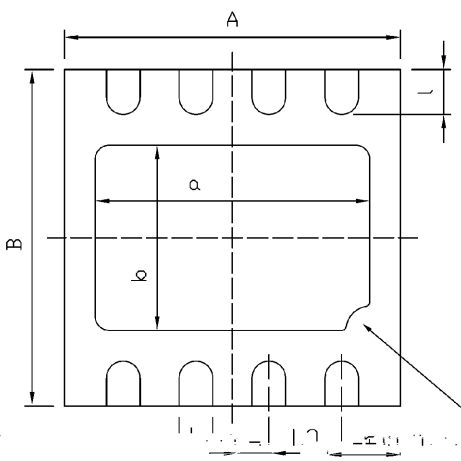
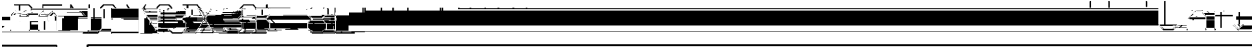
◆

◆

◆

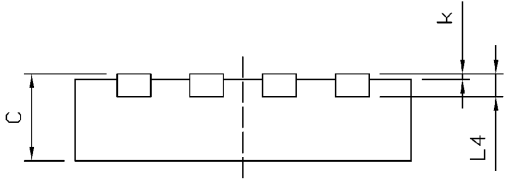
ŽK<D G ž		
M ;		

/ Package Dimensions



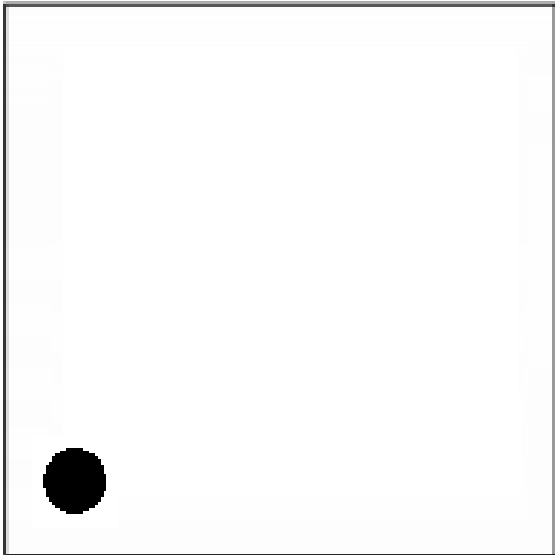
Dimensions In Millimeterer			
Symbol	MIN	TYP	MAX
A	2.95	3.00	3.05
B	2.95	3.00	3.05
C	0.70	0.75	0.80
L	0.25	0.30	0.35
L2	-	0.65	-

.55  
.75  
.05  
.45



a	2.35	2.45	2
b	1.55	1.65	1
k	0.00	-	0
l	0.35	0.40	0

/ Marking Instructions



9I  
+', /E  
XX  
!!!!