

BRCL4056SE

ESOP-8

/

BRCL4056SE

BRCL4056SE

4.2V

1%

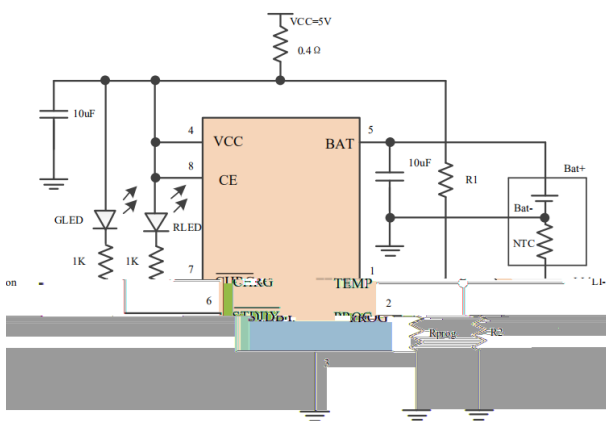
BRCL4056SE

2uA

±

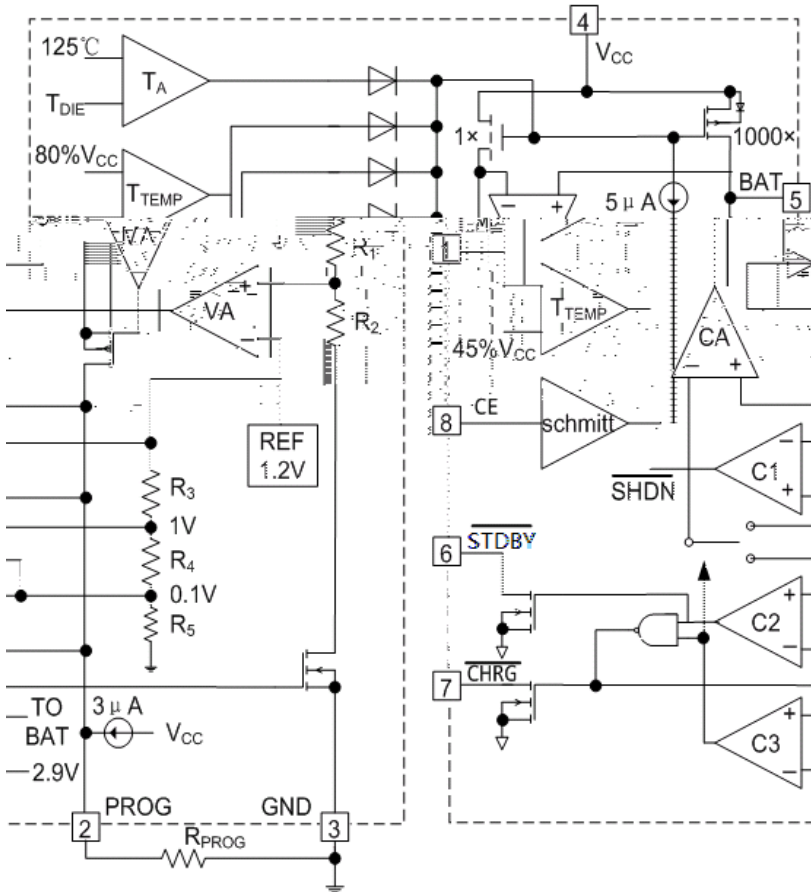
, MP3

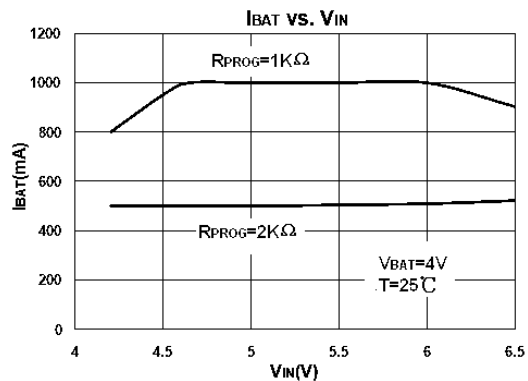
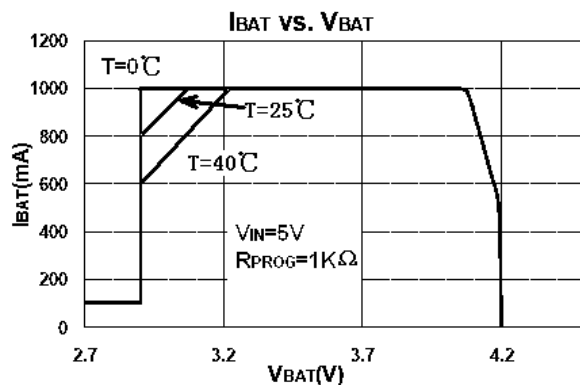
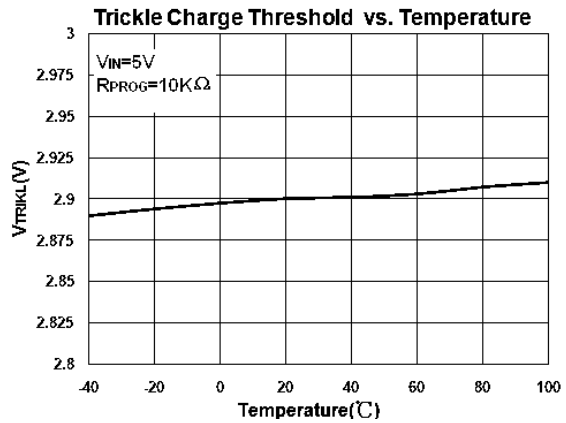
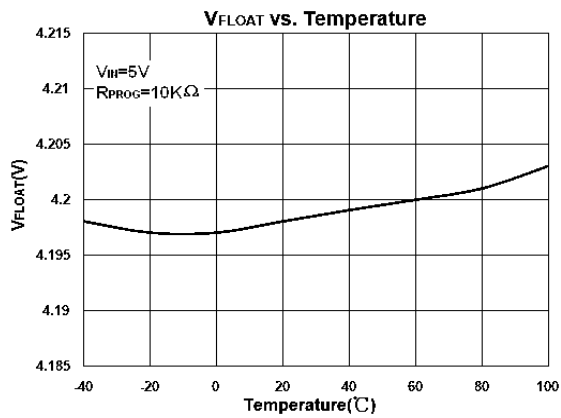
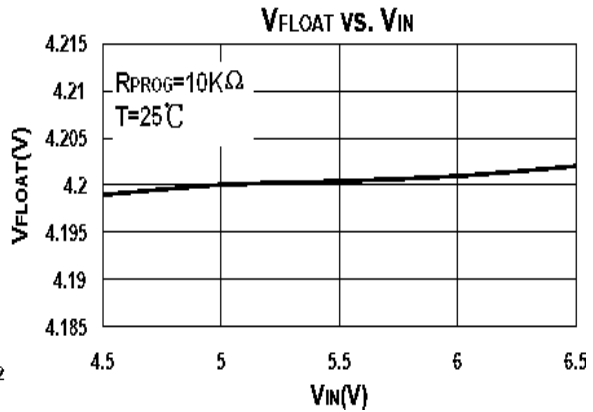
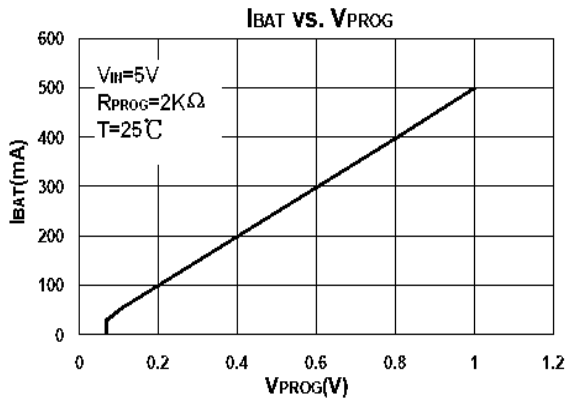
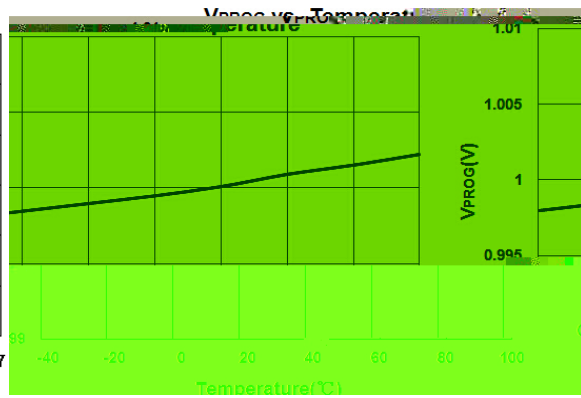
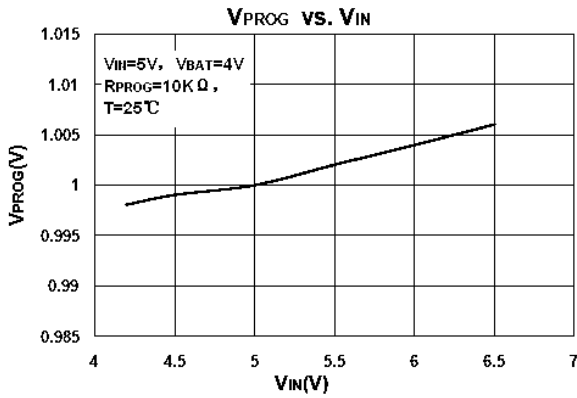
USB

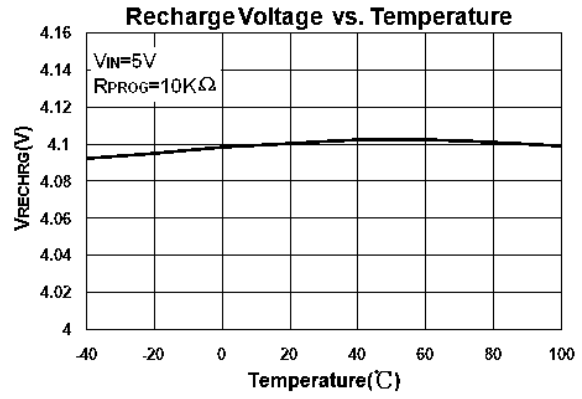
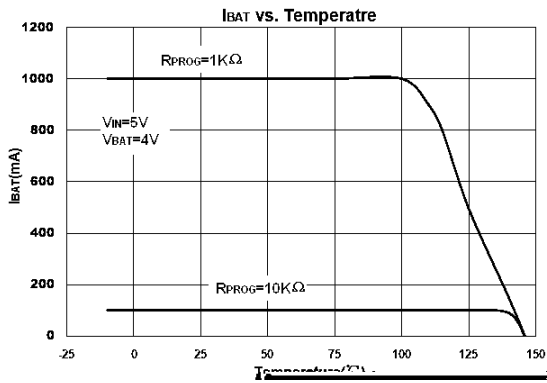


℃

		△		—					
									μ
									Ω







1.0A

CHRG

STDBY

125

CHRG

2.9V

PROG

GND

R_{PROG}

2.9V

4.2V

CHRG

STDBY

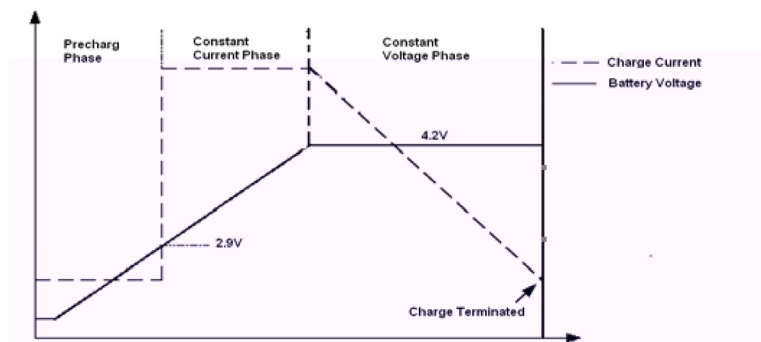
10%

1%

2uA

CE

GND



PROG

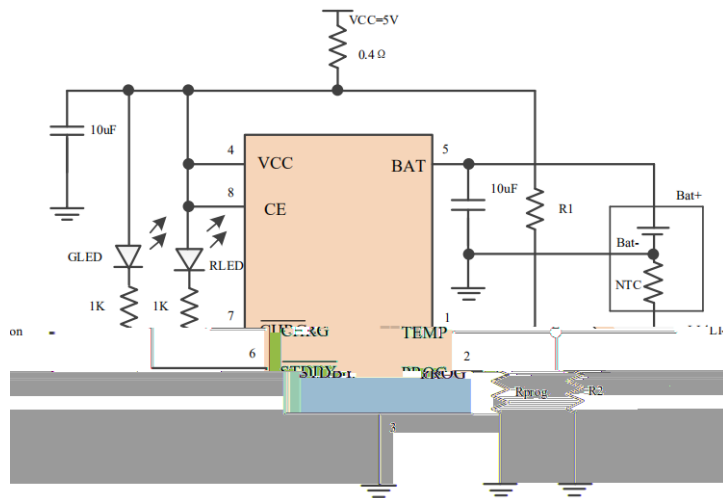
$$R_{PROG} \text{ k} = 1000 / I_{BAT} \text{ mA}$$

BRCL4056SE

TEMP

TEMP

NTC



BRCL4056SE TEMP

V_{LOW} V_{HIGH}

BRCL4056SE V_{LOW}

$45\% \times V_{CC}$ V_{HIGH}

$80\% \times V_{CC}$

TEMP $V_{TEMP} < V_{LOW}$ $V_{TEMP} > V_{HIGH}$

TEMP V_{TEMP} V_{LOW} V_{HIGH}

TEMP

R1 R2

T_L T_H T_L T_H)

NTC

R_{TL} T_L R_{TH} T_H R_{TL} R_{TH}

T_H

TEMP :

$$\frac{V_{TEMP}}{R_1} = \frac{R_2 // R_{TH}}{R_1 + R_2 // R_{TH}} \times V_{IN}$$

T_L

TEMP :

$$V_{TEMP} = \frac{R_2 // R_{TL}}{R_1 // R_2 // R_{TL}} \times V_{IN}$$

ESOP-8

Unit:mm



