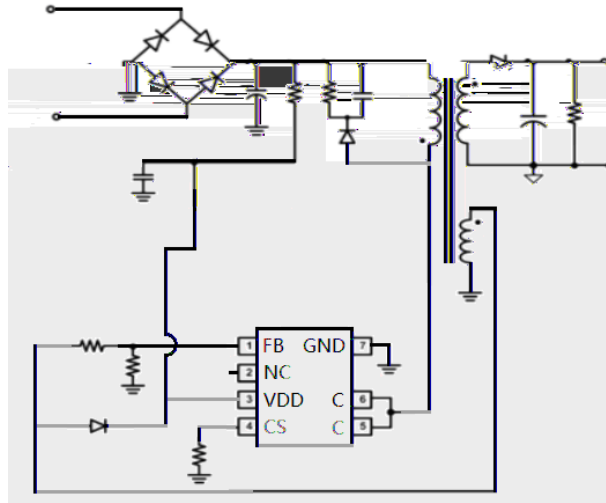
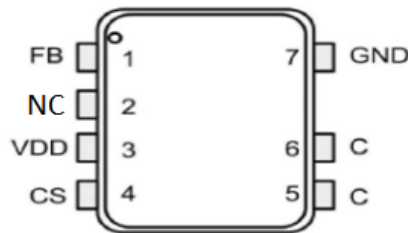


BRAD66225SA
Rev.B May.-2019

/ Typical Application Circuit

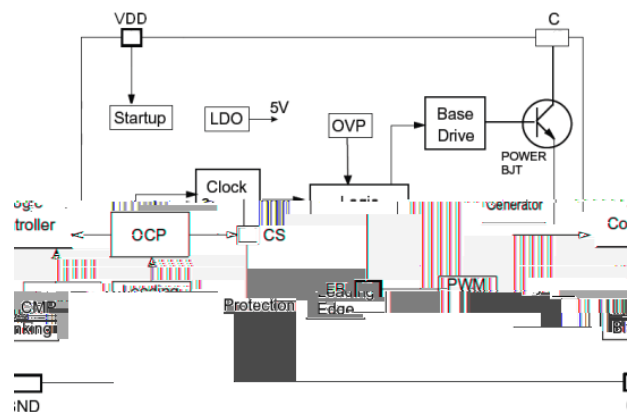


/ Pinning & Description



Pin Number	Pin Name	Description
3	VDD	
4	CS	
5、6	C	
7	GND	

/ Block Diagram



/ Absolute Maximum Ratings(Ta=25)

Parameter	Value	Unit
C Pin Voltage Range	-0.3 to 800	V
V _{DD} DC Supply Voltage	-0.3 to 27	V
CS Voltage Range	-0.3 to 6	V
FB Voltage Range	-0.3 to 6	V
Thermal Resistance Junction-ambient	95	°C/W
Maximum Junction Temperature	150	°C
Operating Temperature Range	-40 to +125	°C
Storage Temperature Range	-65 to +150	°C
Lead Temperature (Soldering,10sec.)	260	°C

Note 1: If the device operating conditions over the maximum rating of the above-mentioned conditions, may cause permanent damage to the device. The above parameters is only part of the operating conditions the maximum, we do not recommend the device running outside the scope of this specification. If the device to work long hours under the condition of absolute maximum limit, its stability may be affected.

/ Electrical Characteristics(Ta=25 VDD=20V if not otherwise noted)

Parameter	Symbol	Test Conditions	Min	Typ	Max	Unit
Supply Voltage Section(V_{DD} Pin)						
Start-up current into VDD pin	I _{VDD_st}	(V _{DD_ON} -1) V		3	20	uA
Operation Current	I _{VDD_Op}			0.8		mA
VDD Under Voltage Lockout Exit	V _{DD_ON}	VDD Rising	15	16	17	V
VDD Under Voltage Lockout Enter	V _{DD_OFF}	VDD Falling	3.8	4.2	4.6	V
VDD OVP Threshold	V _{DD_OVP}			26		V
Control Function Section (FB Pin)						
Internal Error Amplifier (EA) Reference Input	V _{FB}		1.975	2.0	2.025	V
Minimum OFF time	T _{off_min}			2		us
Maximum frequency	F _{max}			100		KHz
Minimum frequency	F _{min}			350		Hz

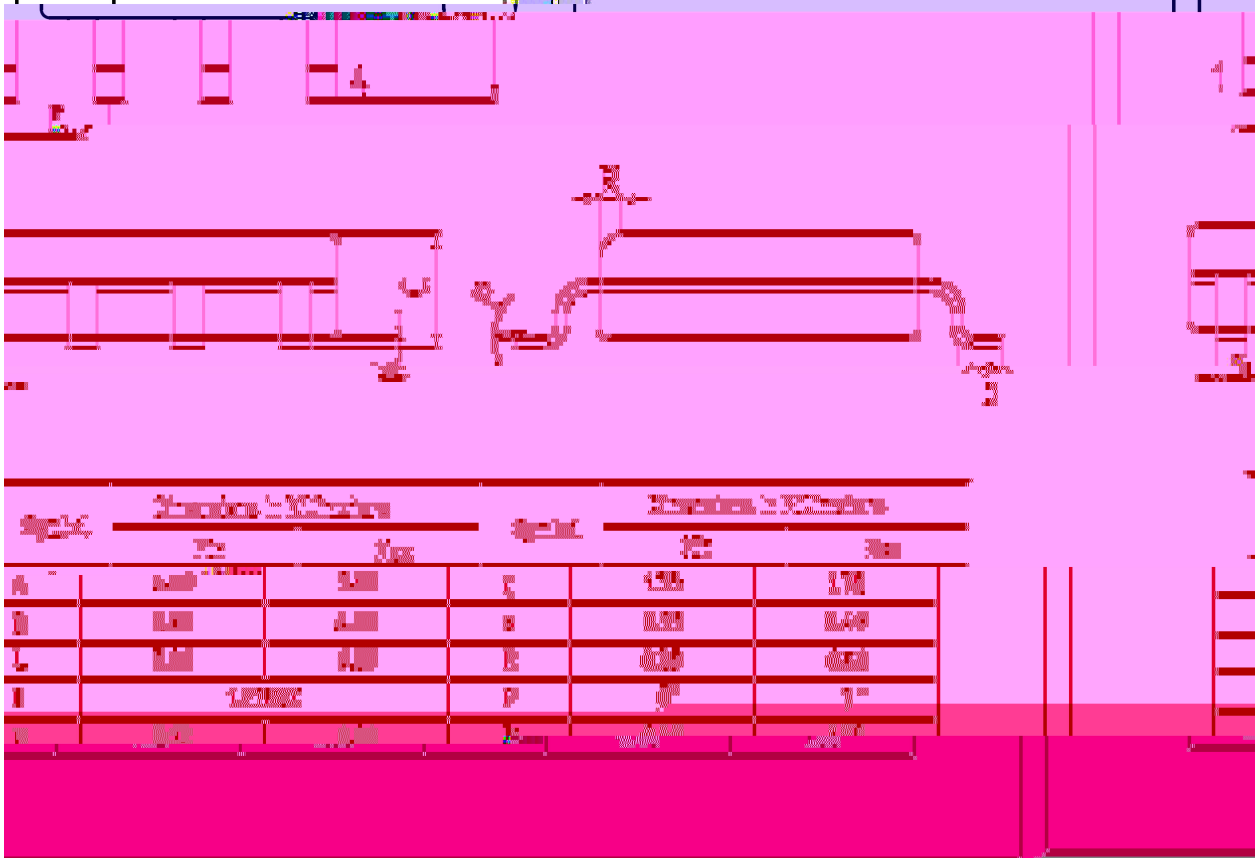
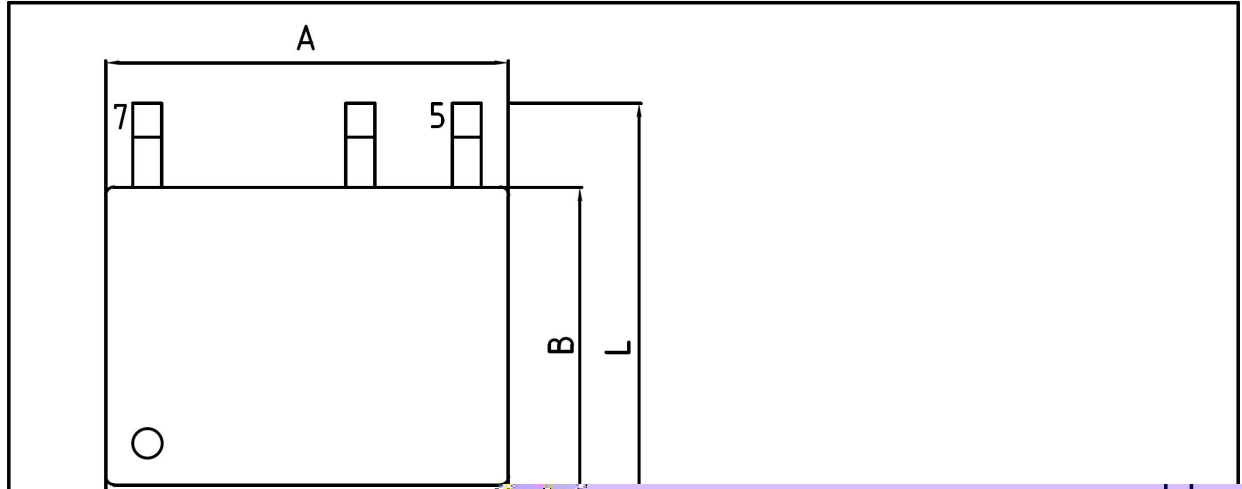
Parameter	Symbol	Test Conditions	Min	Typ	Max	Unit
Maximum Cable Drop Compensation (CDC) Current	$I_{\text{Cable_max}}$			45		μA
Current Sense Input Section (CS Pin)						
CS Input Leading Edge Blanking Time	T_{LEB}			350		ns
Minimum overcurrent protection threshold	$V_{\text{TH_OCPmin}}$			500		mV
Maximum overcurrent protection threshold	$V_{\text{TH_OCPmax}}$			550		mV
Power BJT Section (C Pin)						
Collector-Base Breakdown Voltage	V_{CBO}		800			V

/ Functional Description

/ Package Dimensions

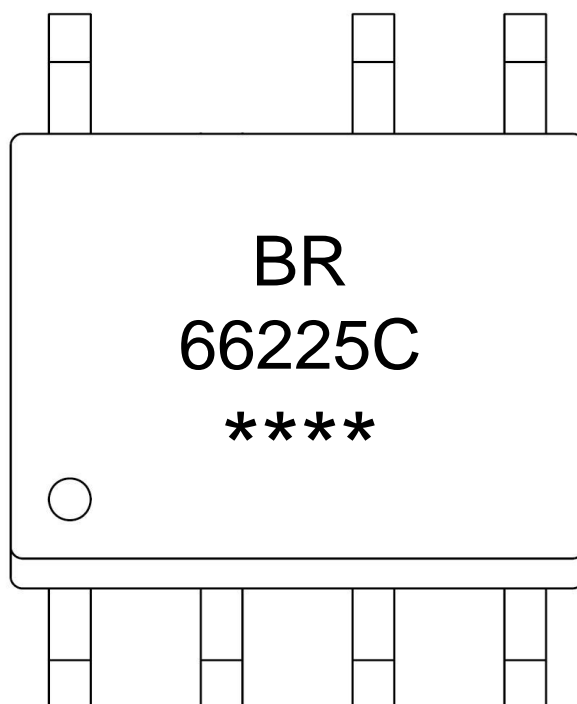
SOP-7

单位: mm



Symbol	Dimension 1 (Reference)		Symbol	Dimension 2 (Reference)	
	Min	Max		Min	Max
A	6.40	6.60	E	0.50	0.70
B	4.40	4.60	F	0.20	0.40
C	4.40	4.60	G	0.20	0.40
D	1.2700		H	0"	1"
I	0.20	0.40	J	0.20	0.40

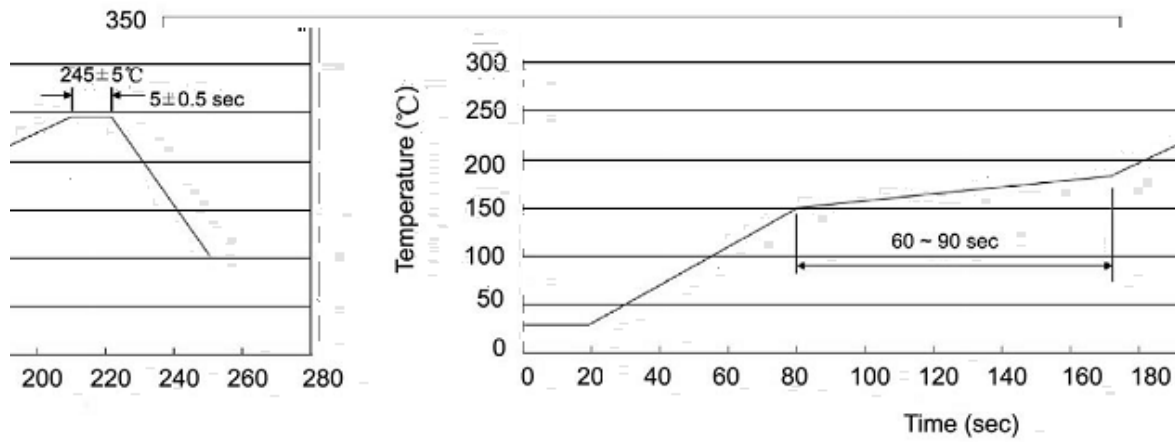
/ Marking Instructions



Note

BR	Company Code
66225C	Product Type, or 66225D , or 66225E
****:	Lot No.Code,code change with Lot No.

() / Temperature Profile for IR Reflow Soldering(Pb-Free)



Note:

- | | | | | | |
|---|-----|-----|----|---------|---|
| 1 | 150 | 180 | 60 | 90sec; | 1.Preheating:150~180 , Time:60~90sec. |
| 2 | 245 | 5 | 5 | 0.5sec; | 2.Peak Temp.:245 5 , Duration:5 0.5sec. |
| 3 | | 2 | 10 | /sec. | 3. Cooling Speed: 2~10 /sec. |

/ Resistance to Soldering Heat Test Conditions

260 5 10 1 sec. Temp.:260±5°C Time:10±1 sec

/ Packaging SPEC.

/ REEL

Package Type 封装形式	Units 包装数量					Dimension 包装尺寸 (unit: mm)		
	Units/Reel 只/卷盘	Reels/Inner Box 卷盘/盒	Units/Inner Box 只/盒	Inner Boxes/Outer Box 盒/箱	Units/Outer Box 只/箱	Reel	Inner Box 盒	Outer Box 箱
SOP-7	4,000	2	8,000	6	48,000	13" x12	360x360x50	380x335x366

/ Notices