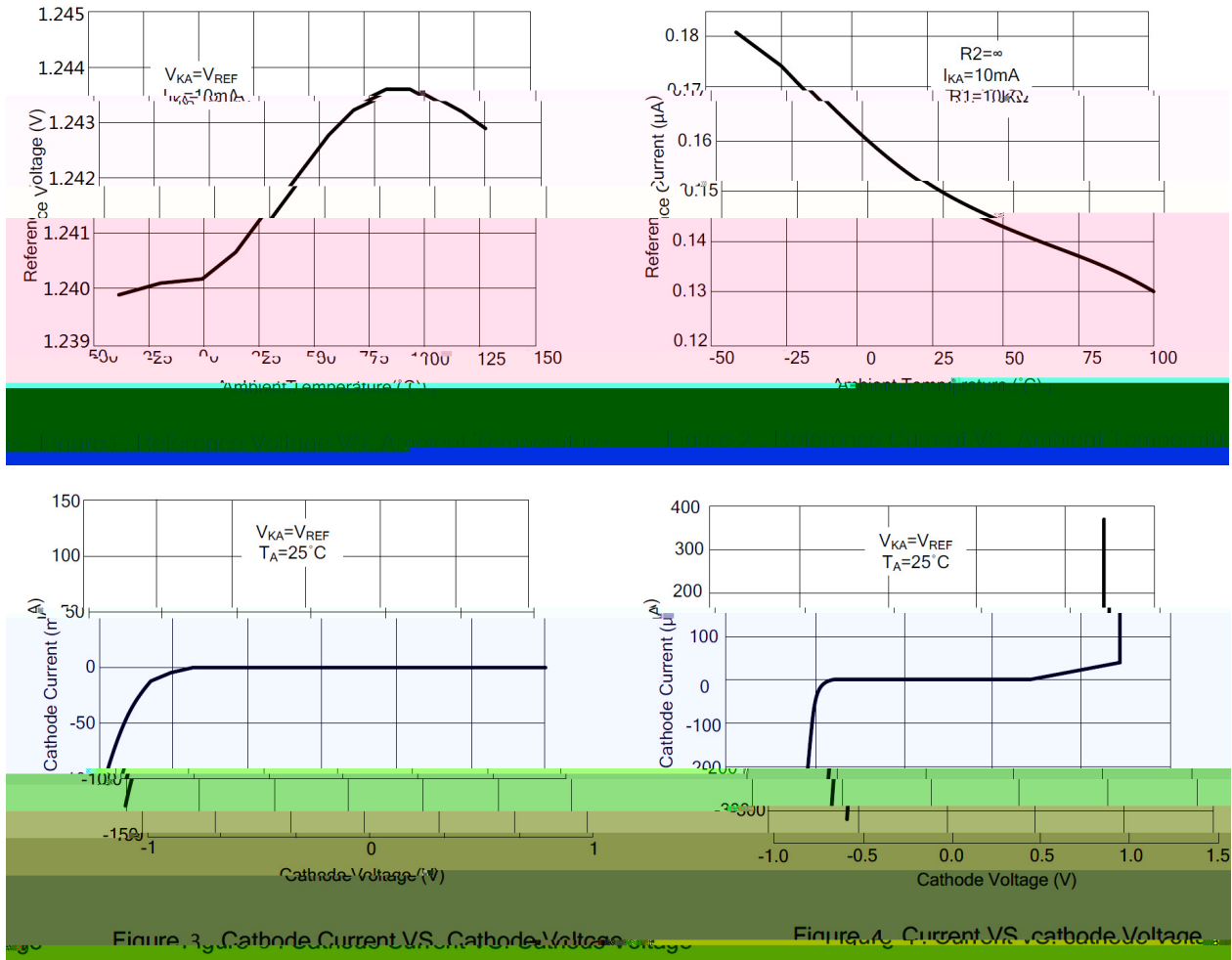




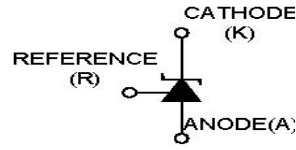
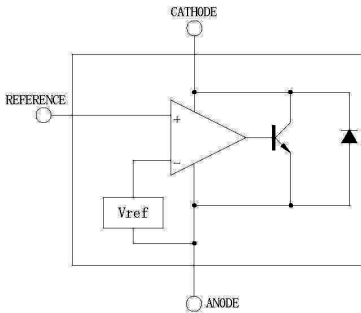
Parameter	Symbol	Rating	Unit
Cathode voltage	$V_{KA}$	20	V
Continuous cathode current range	$I_K$	-100 +100	mA
Reference current range	$I_{REF}$	10	mA
Power Dissipation	$P_D$	370	mW

/ Electrical Characteristic Curve

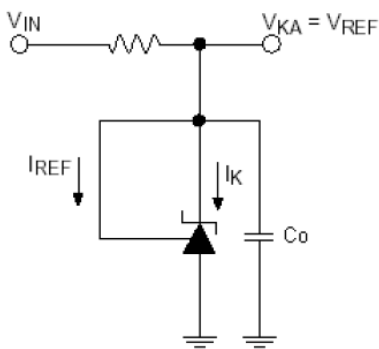


**& Test circuits&Typical Application**

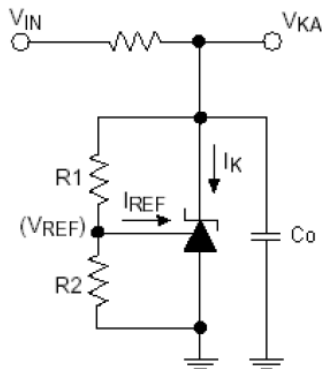
BLOCK DIAGRAM:



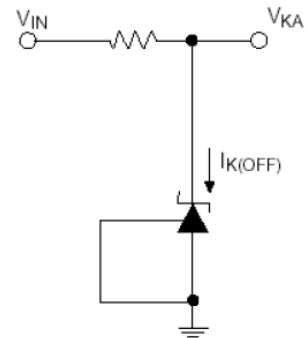
TEST CIRCUITS:



Test Circuit For  $V_{KA} = V_{REF}$   
 $C_o = 0.1\mu F$

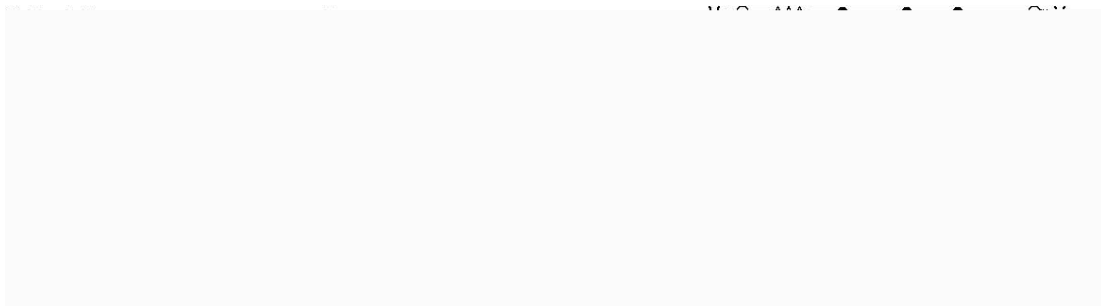


Test Circuit for  $V_{KA} \geq V_{REF}$   
 $C_o = 0.1\mu F$



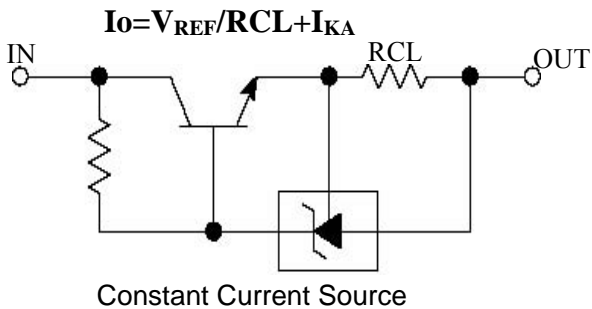
Test Circuit For  $I_{K(OFF)}$

TYPICAL APPLICATIONS:

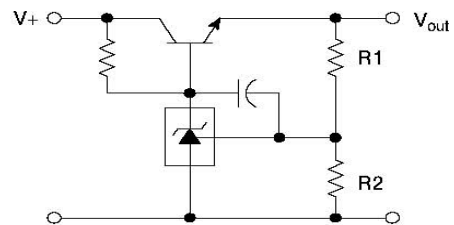


Shutdown Regulator

Higher-current Shunt



Constant Current Source



$$V_{out} = \left(1 + \frac{R_1}{R_2}\right) V_{ref}$$

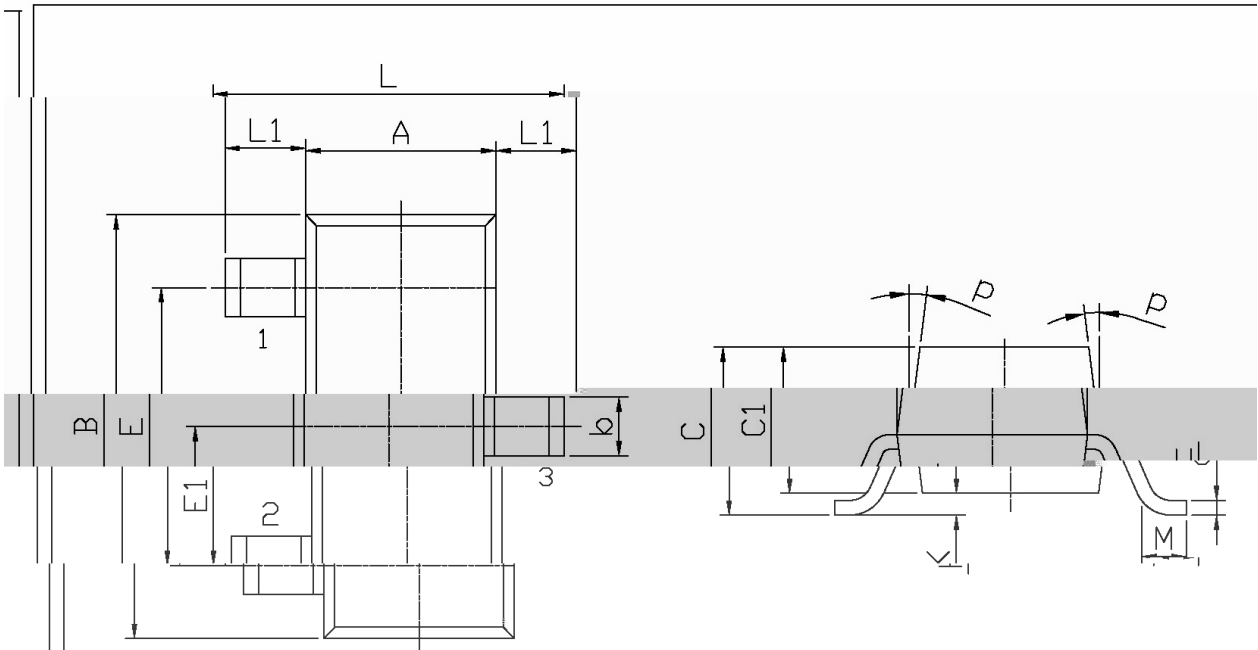
$$V_{out\ min} = V_{ref} + V_{h0}$$

Series Pass Regulator

/ Package Dimensions

SOLT-23

单位: mm



Symbol	Dimensions in Millimeters		Symbol	Dimensions in Millimeters	
	Min	Max		Min	Max
L	2.2	2.7	C	1.30Max	
L1	0.45	0.65	C1	0.90	1.20
B	2.70	3.10	K	0	0.10
E	1.70	2.10	M	0.20MIN	
E1	0.85	1.05	P	7°	

/ Marking Instructions



Q

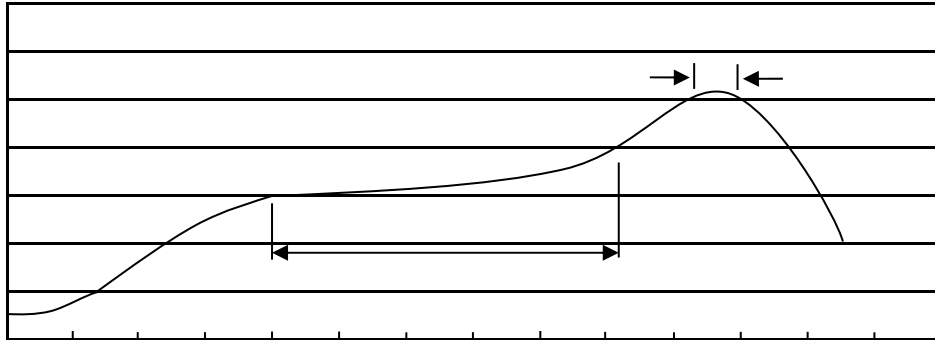
432

Note:

Q: Automobile halogen-free product Code

432: Product Type

( ) /



Note:

- |   |         |            |   |
|---|---------|------------|---|
| 1 | 150 200 | 60 120sec; | 1.Preheating:150~200 , Time:60~120sec.  |
| 2 | 255±5   | 5±0.5sec;  | 2.Peak Temp.:255±5 , Duration:5±0.5sec. |
| 3 | 2 10    | /sec.      | 3. Cooling Speed: 2~10 /sec.            |

**/ Resistance to Soldering Heat Test Conditions**

260±5                      10±1 sec.                      Temp.:260±5                      Time:10±1 sec

**/ Packaging SPEC.**

/ REEL

Package Type	Units					Dimension (unit mm <sup>3</sup> )		
	Units/Reel	Reels/Inner Box	Units/Inner Box	Inner Boxes/Outer Box	Units/Outer Box	Reel	Inner Box	Outer Box
SOT-23	3,000	10	30,000	6	180,000	7 x8	180x120x180	390x385x205

**/ Notices**