

/ Descriptions

JFK\$) *

/ Features

\sim μ

/ Applications

/ Equivalent Circuit



/ Pinning



/ h_{FE} Classifications & Marking

--	--

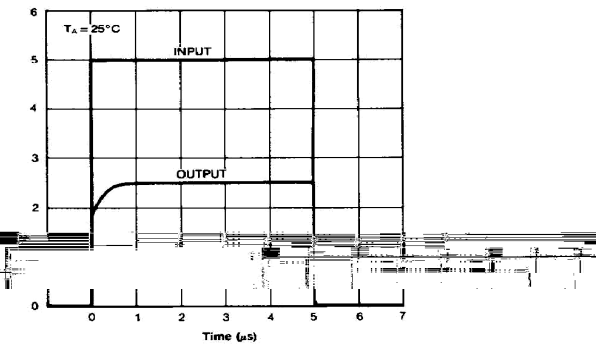
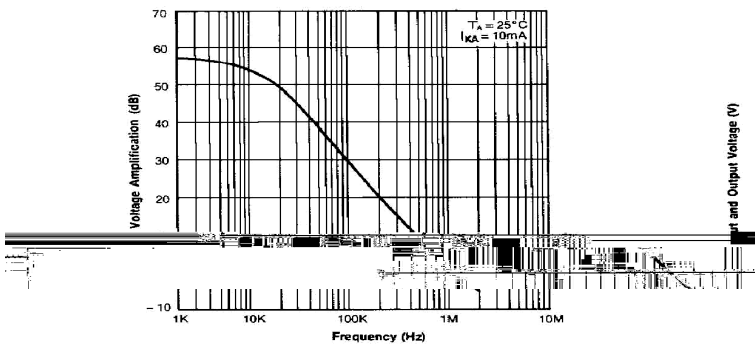
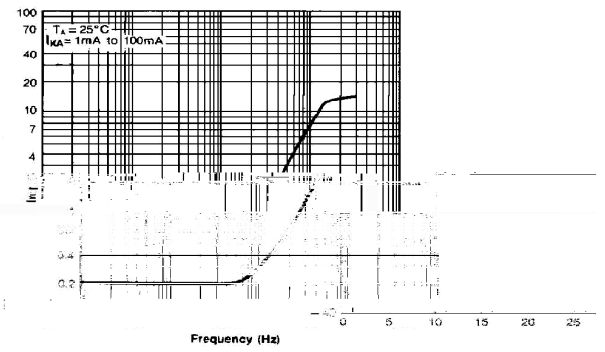
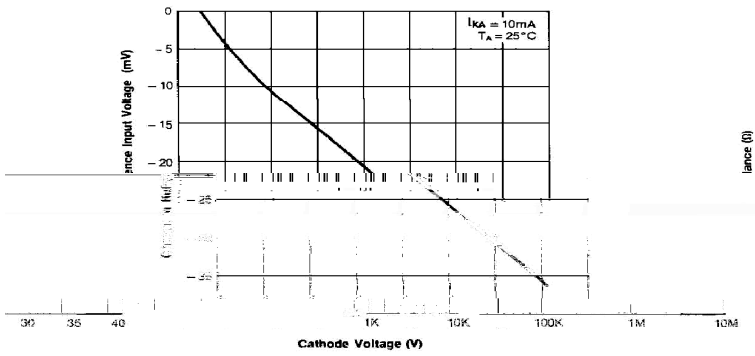
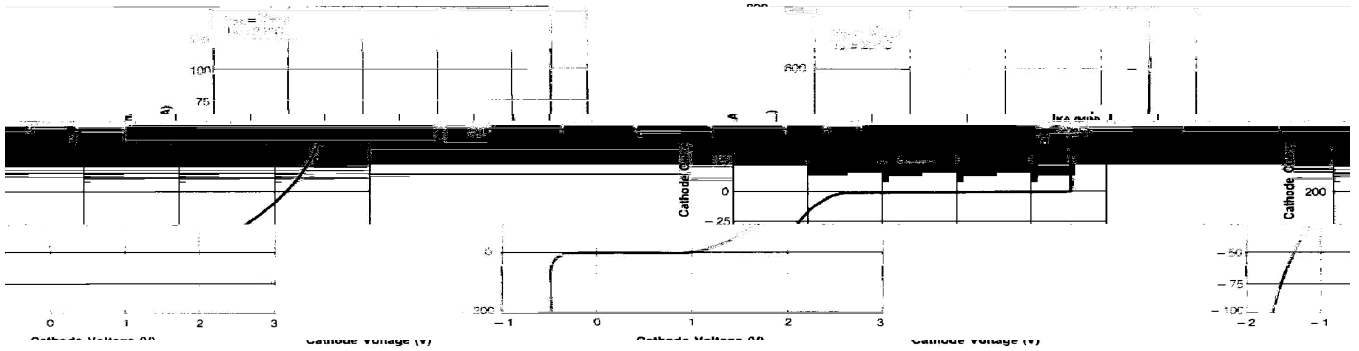
/ Absolute Maximum Ratings(Ta=25)

		~	
		~	
		~	°C
			°C
		~	°C

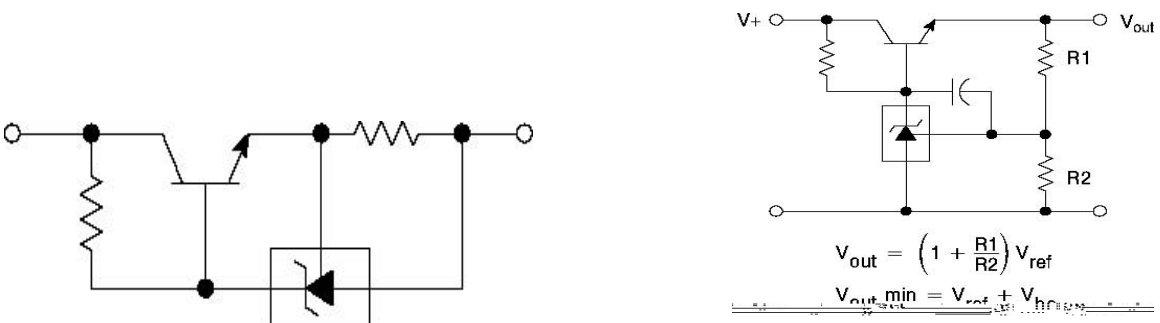
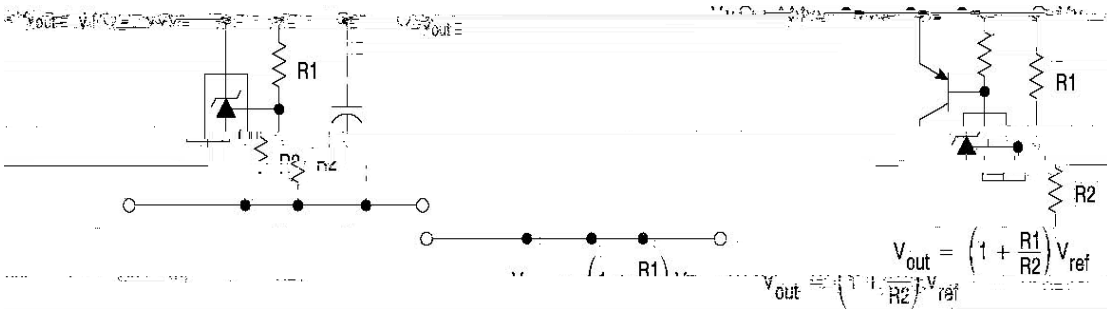
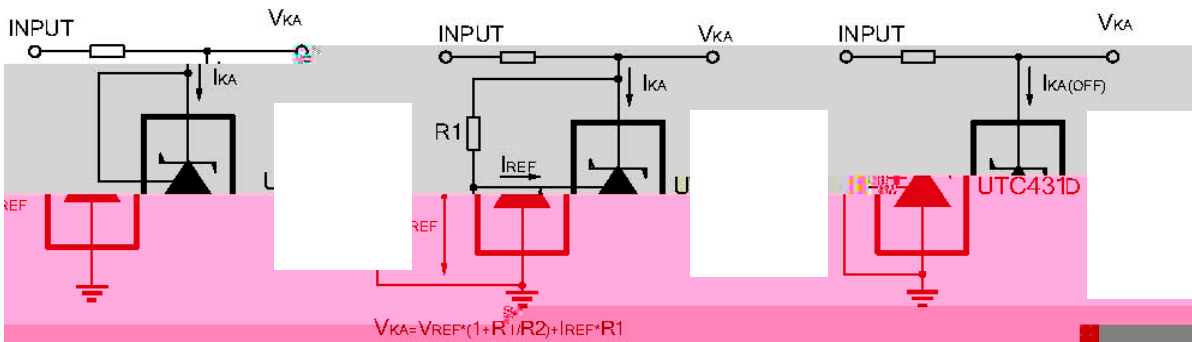
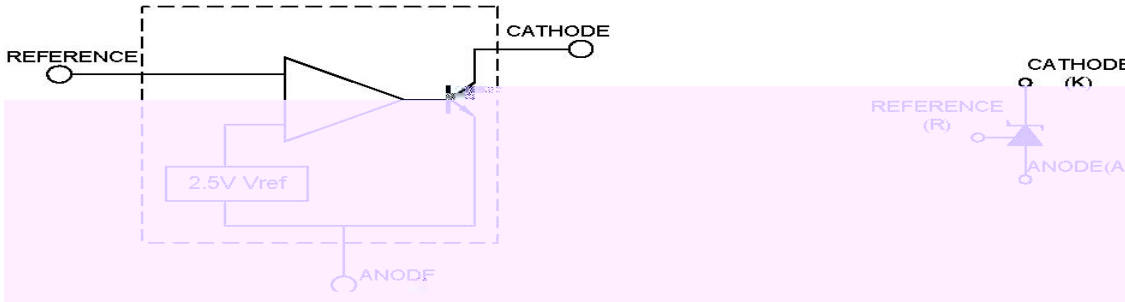
/ Electrical Characteristics(Ta=25)

	△		~ °C			
	△ △	△				
		△				
						μ
	△		~ °C			μ
						μ

/ Electrical Characteristic Curve



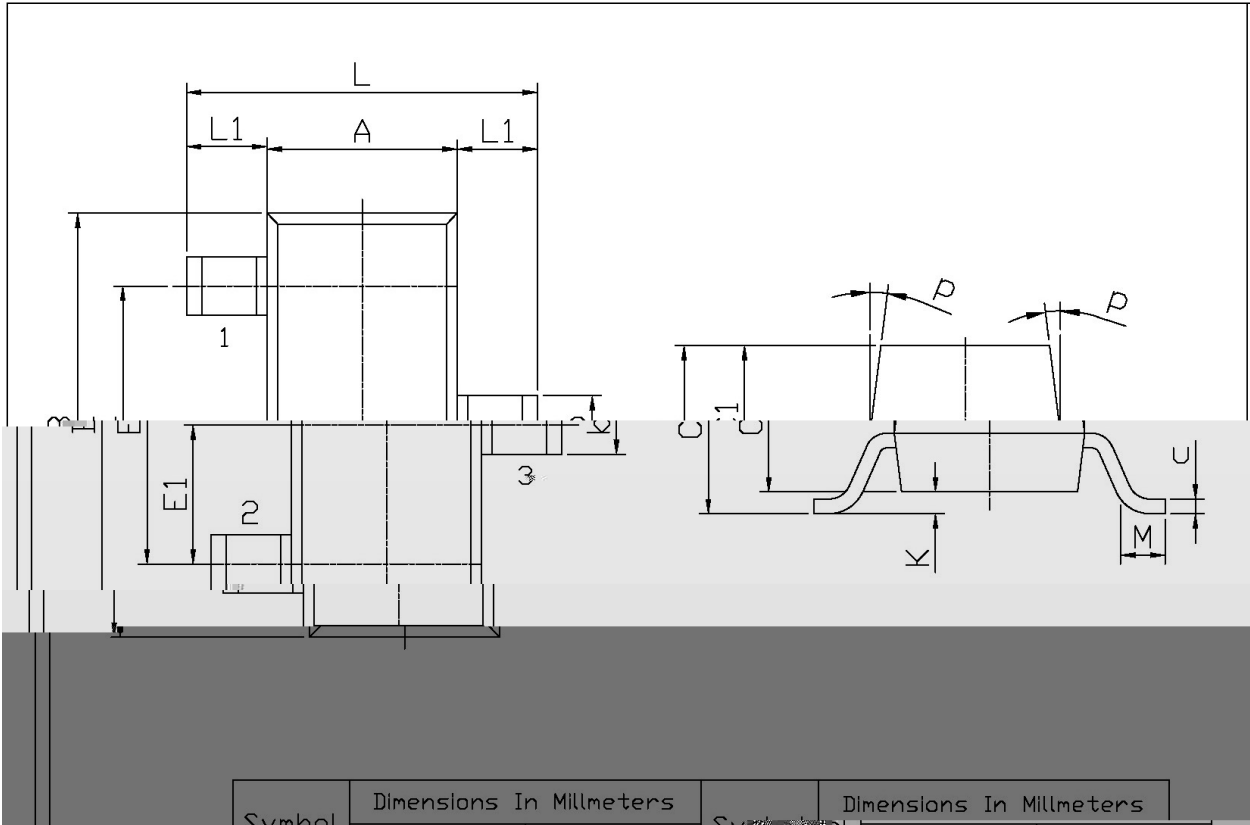
& Test circuits&Typical Application



/ Package Dimensions

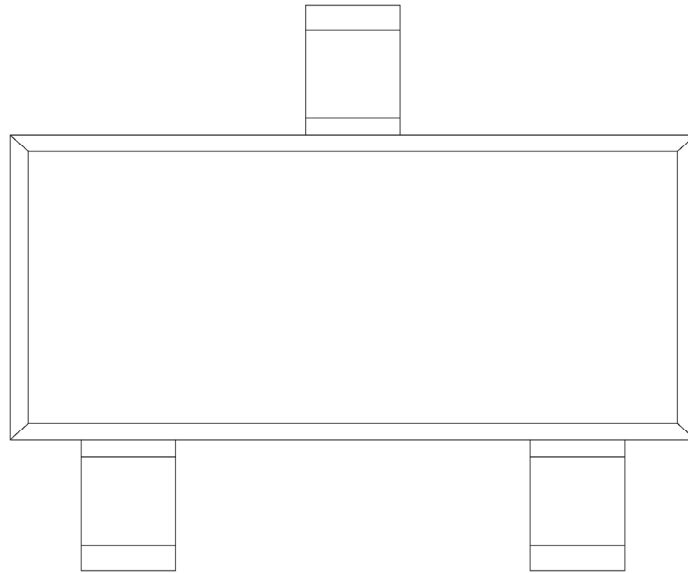
SOT-23

单位: mm



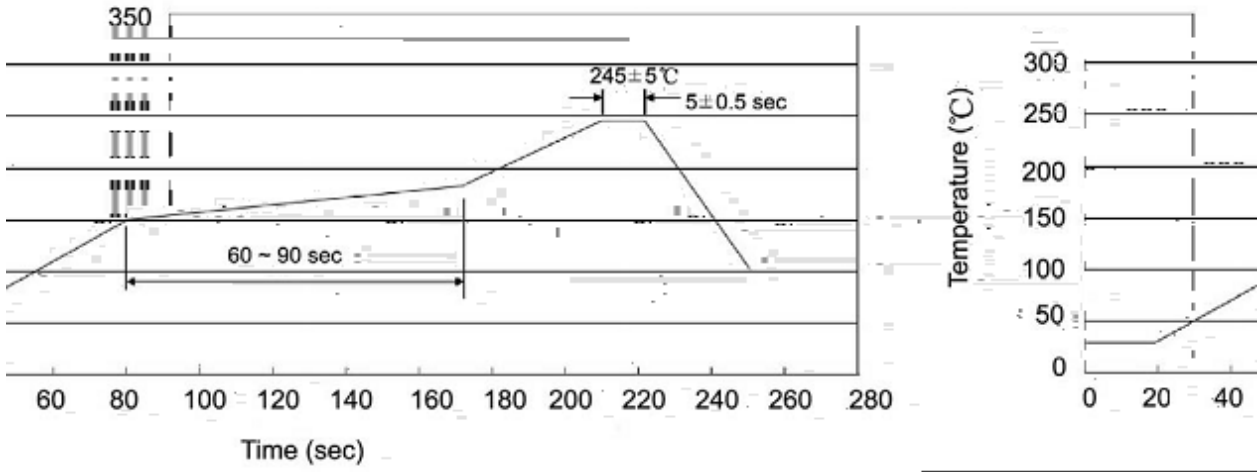
Symbol	Dimensions In Millimeters		Symbol	Dimensions In Millimeters	
	Min	Max		Min	Max
L	2.2	2.7	C	1.30Max	
L1	0.45	0.65	C1	0.90	1.20
A	1.15	1.50	c	0.05	0.20
B	2.70	3.10	K	0	0.10
E	1.70	2.10	M	0.20MIN	
E1	0.85	1.05	P	7°	
k	0.35	0.55			

/ Marking Instructions



91
+*(
I 1 91 +*(D I B

() / Temperature Profile for IR Reflow Soldering(Pb-Free)



/ Resistance to Soldering Heat Test Conditions

... .. °C

/ Packaging SPEC.

	Units/Reel	Reels/Inner Box	Units/Inner Box	Inner Boxes/Outer Box	Units/Outer Box	Reel	Inner Box	Outer Box
SOT-23	3,000	10	30,000	6	180,000	7" ×8	180×120×180	390×385×205

/ Notices