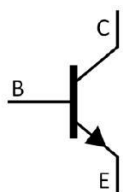


/ Descriptions

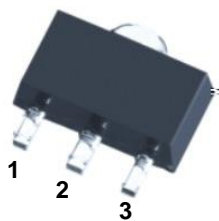
/ Features

/ Applications

/ Equivalent Circuit



/ Pinning

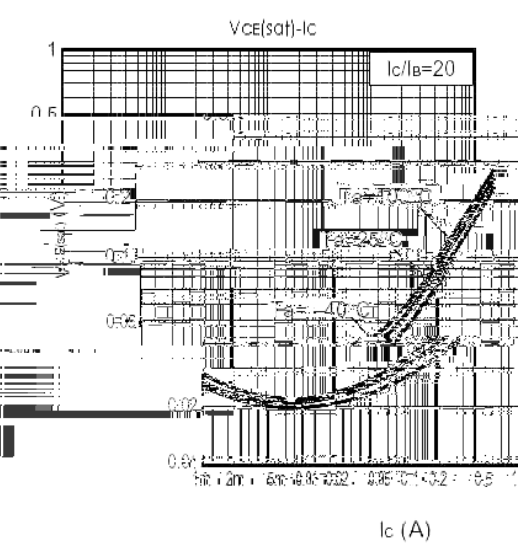
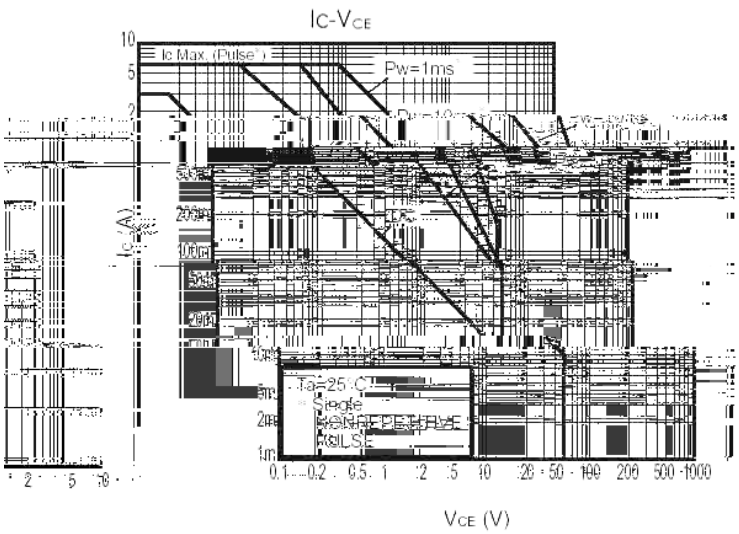
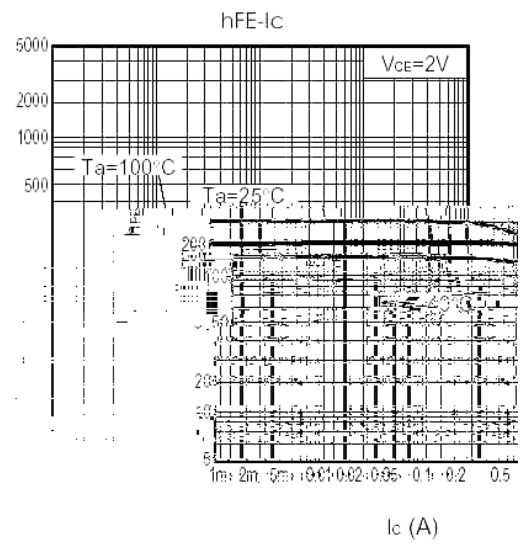
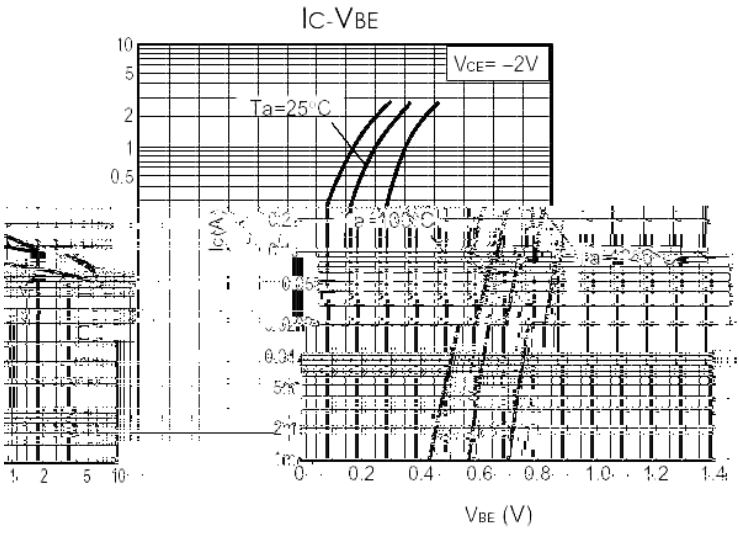


/ h_{FE} Classifications & Marking

	*	*

		μ				
		μ				
						μ
						μ

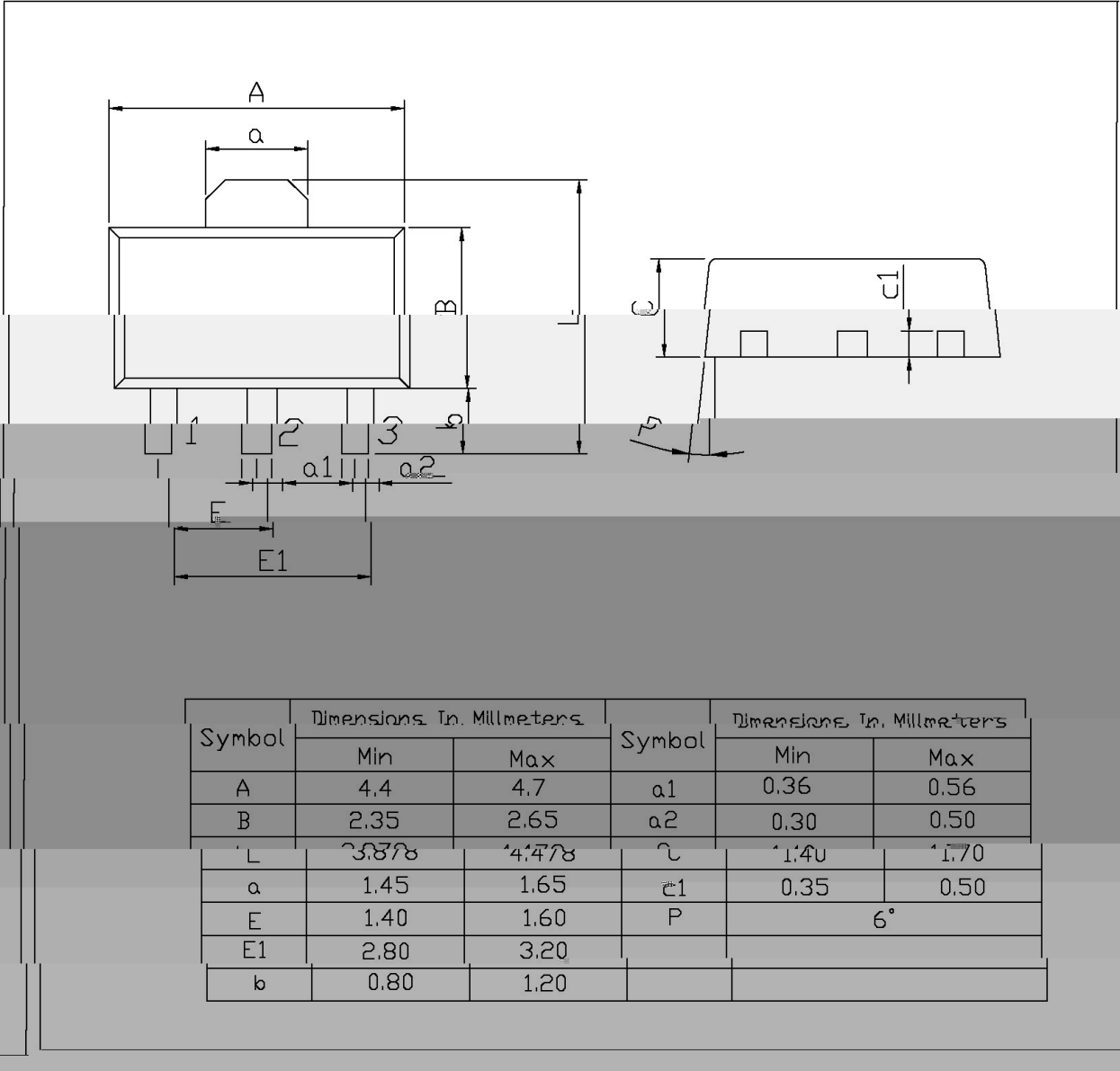
/ Electrical Characteristic Curve



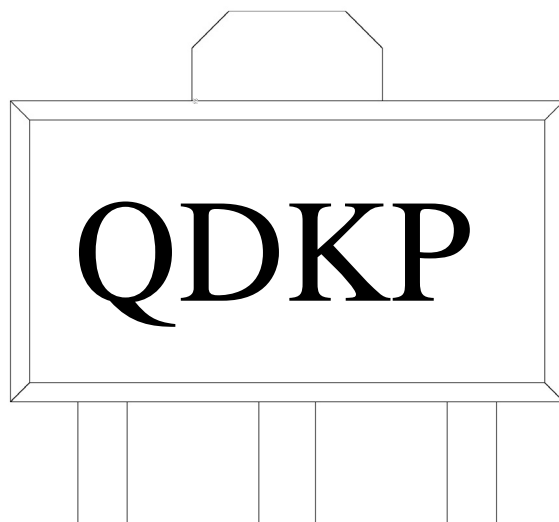
/ Package Dimensions

SOT-89

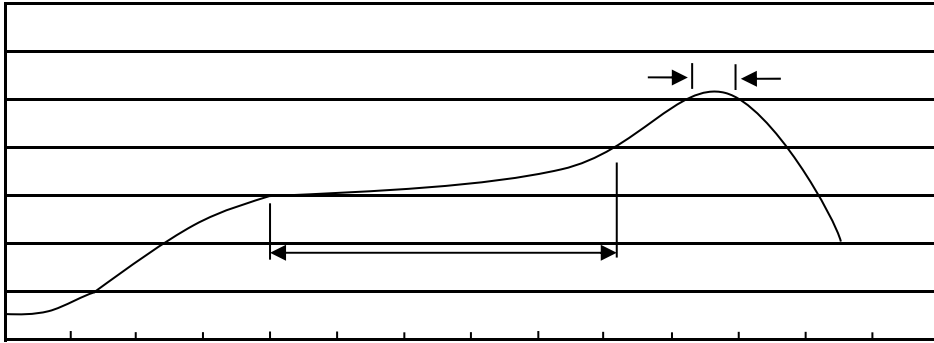
单位: mm



/ Marking Instructions



() / Temperature Profile for IR Reflow Soldering(Pb-Free)



/ Resistance to Soldering Heat Test Conditions

/ Packaging SPEC.

	Units/Reel	Reels/Inner Box	Units/Inner Box	Inner Boxes/Outer Box	Units/Outer Box	Reel	Inner Box	Outer Box
	/	/	/	/	/			
SOT-89	1,000	7	7,000	6	42,000	7 ×12	180×120×180	390×385×205

/ Notices