

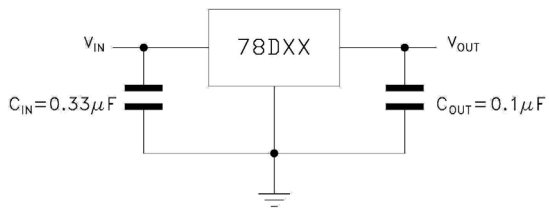
/ Descriptions

/ Features

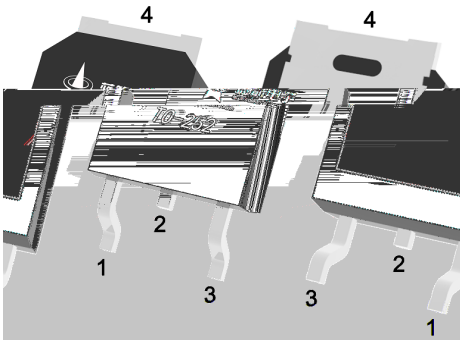
1.5A,

/ Applications

/ / Equivalent Circuit or Application Circuit

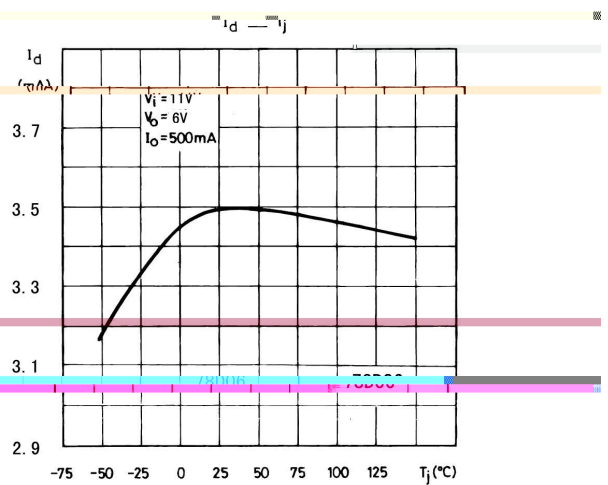
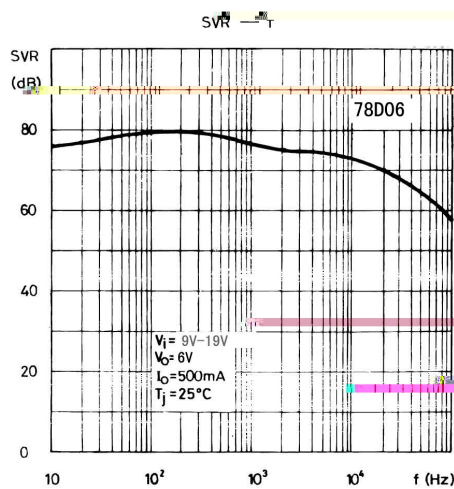
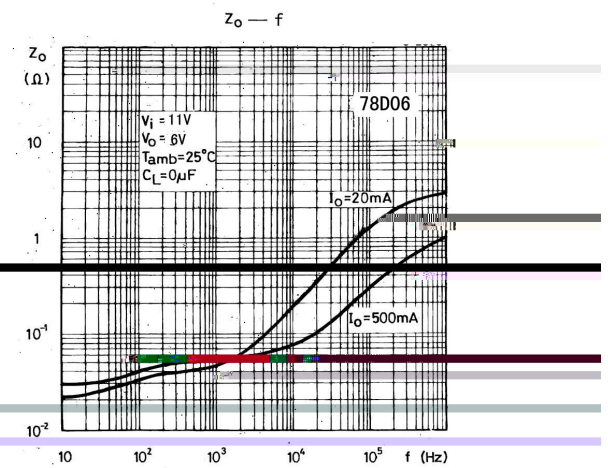
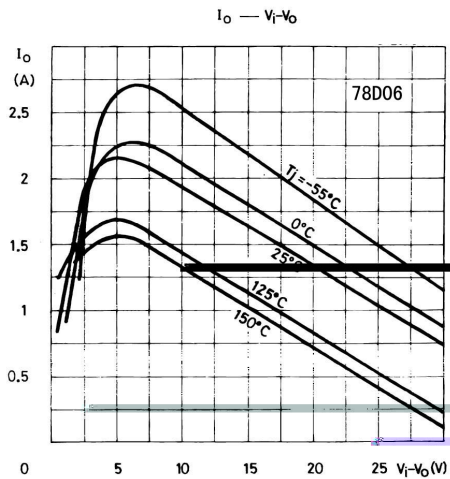
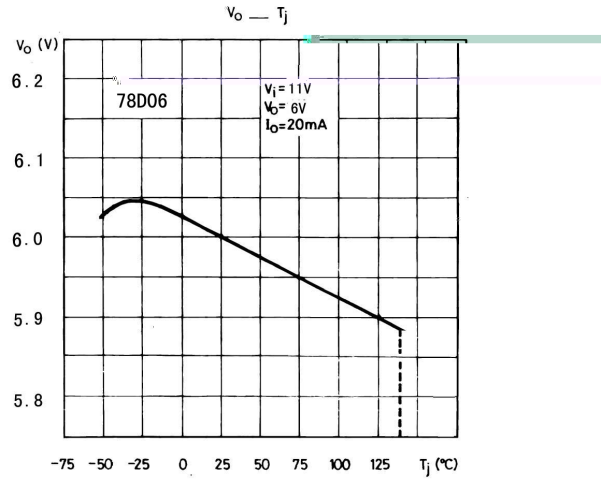
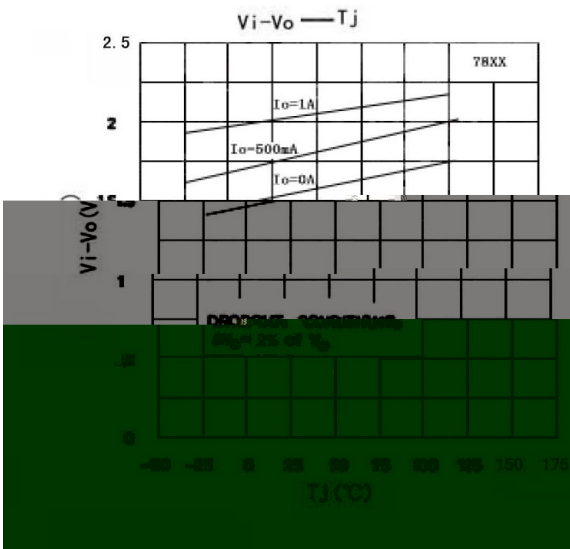


/ Pinning

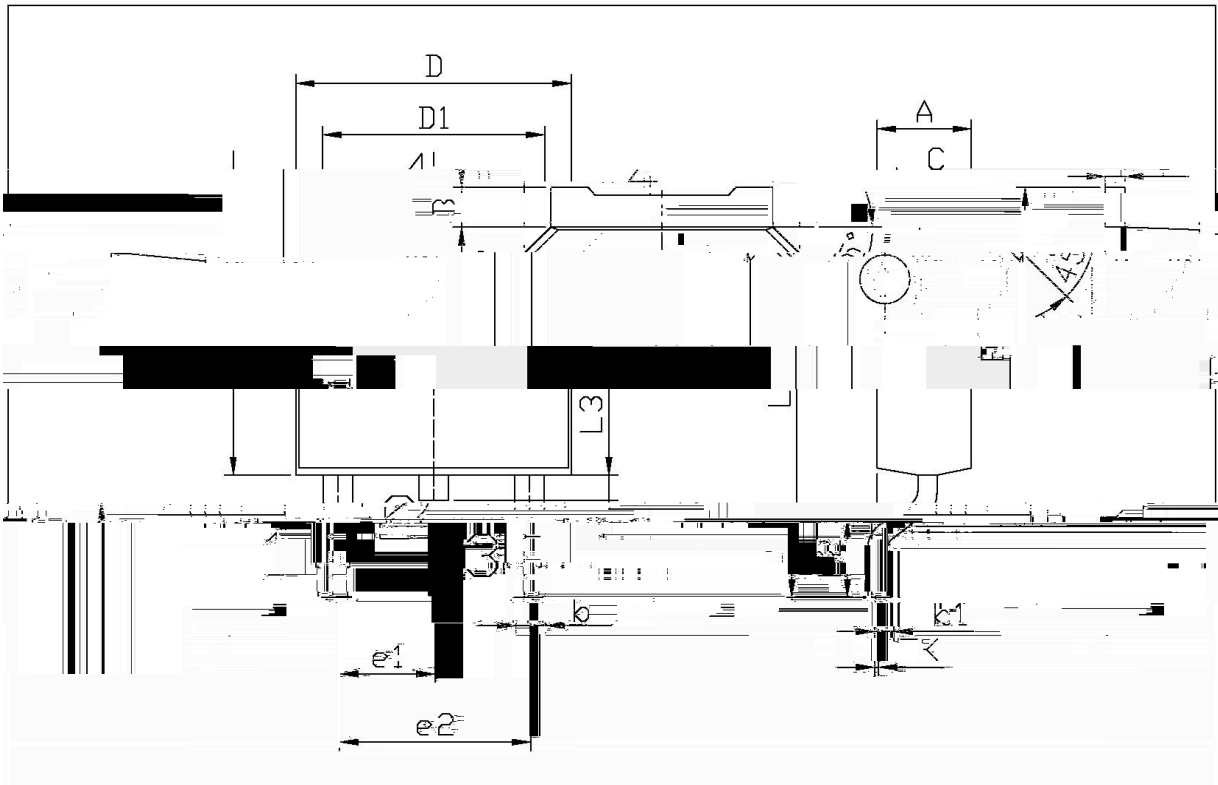


/ Marking

/ Electrical Characteristic Curve



/ Package Dimensions

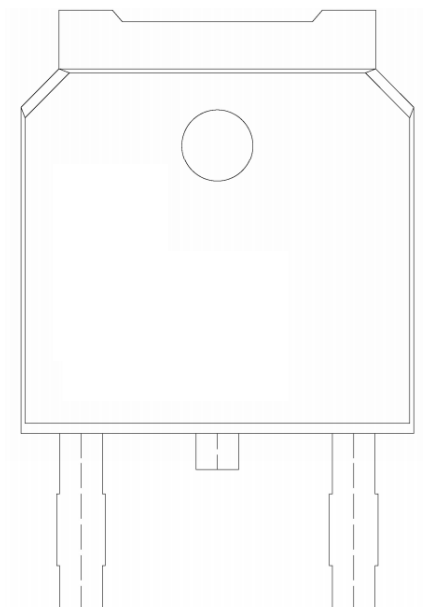


单位: mm

Symbol	Dimensions In Millimeters		Symbol	Dimensions In Millimeters	
	Min	Max		Min	Max
A	2.20	2.90	F	0.20	0.50
B	0.95	1.25	e1	2.34	2.24
C	0.70	0.90	e2	9.85	10.35
D	6.45	6.75	L3	0.60	0.90
D1	5.10	5.50	k1	0.00	0.10
L3	0.45	0.55			

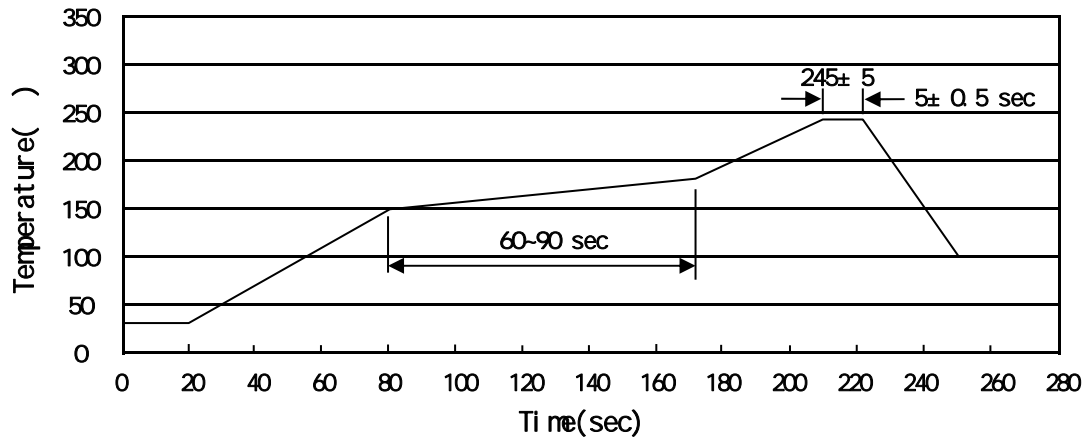
TO-252

/ Marking Instructions



BR
78D06

() / Temperature Profile for IR Reflow Soldering(Pb-Free)



± ± ± ±

/ Resistance to Soldering Heat Test Conditions

± ±

/ Packaging SPEC.

	Units/Reel	Reels/Inner Box	Units/Inner Box	Inner Boxes/Outer Box	Units/Outer Box	Reel	Inner Box	Outer Box
	/	/	/	/	/			

	Units/Tube	Tubes/Inner Box	Units/Inner Box	Inner Boxes/Outer Box	Units/Outer Box	Tube	Inner Box	Outer Box
	/	/	/	/	/			

/ Notices