

/ Descriptions

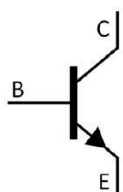
SOT-89 NPN

/ Features

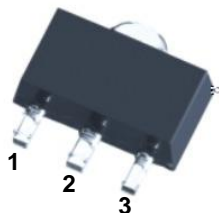
2SB1386

/ Applications

/ Equivalent Circuit



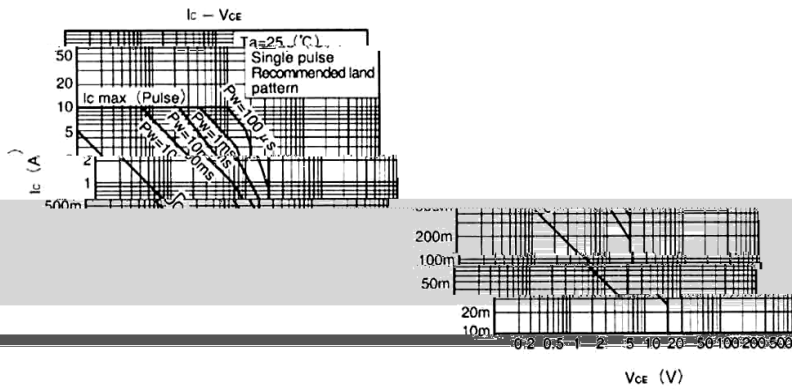
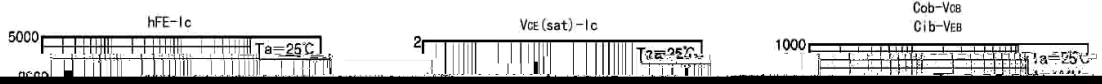
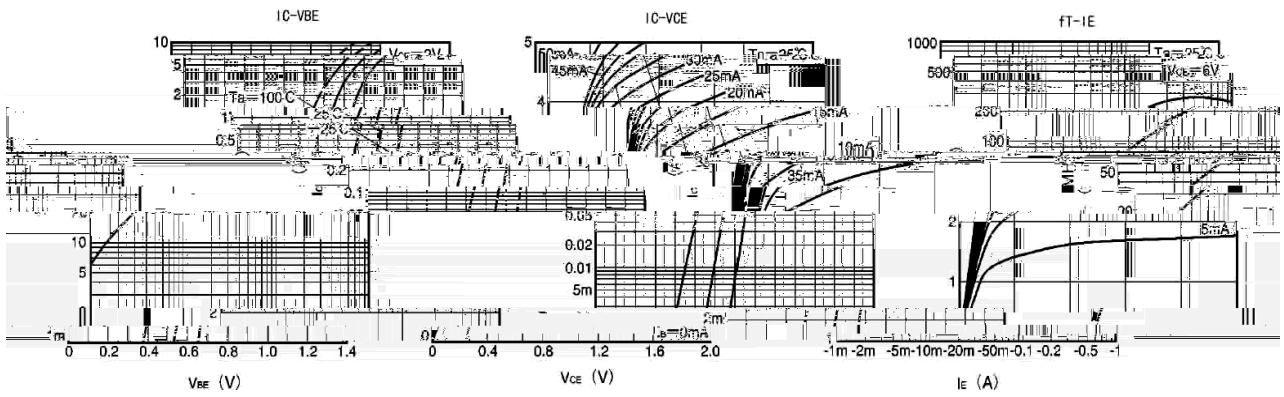
/ Pinning



/ Marking

--	--	--	--	--	--	--	--

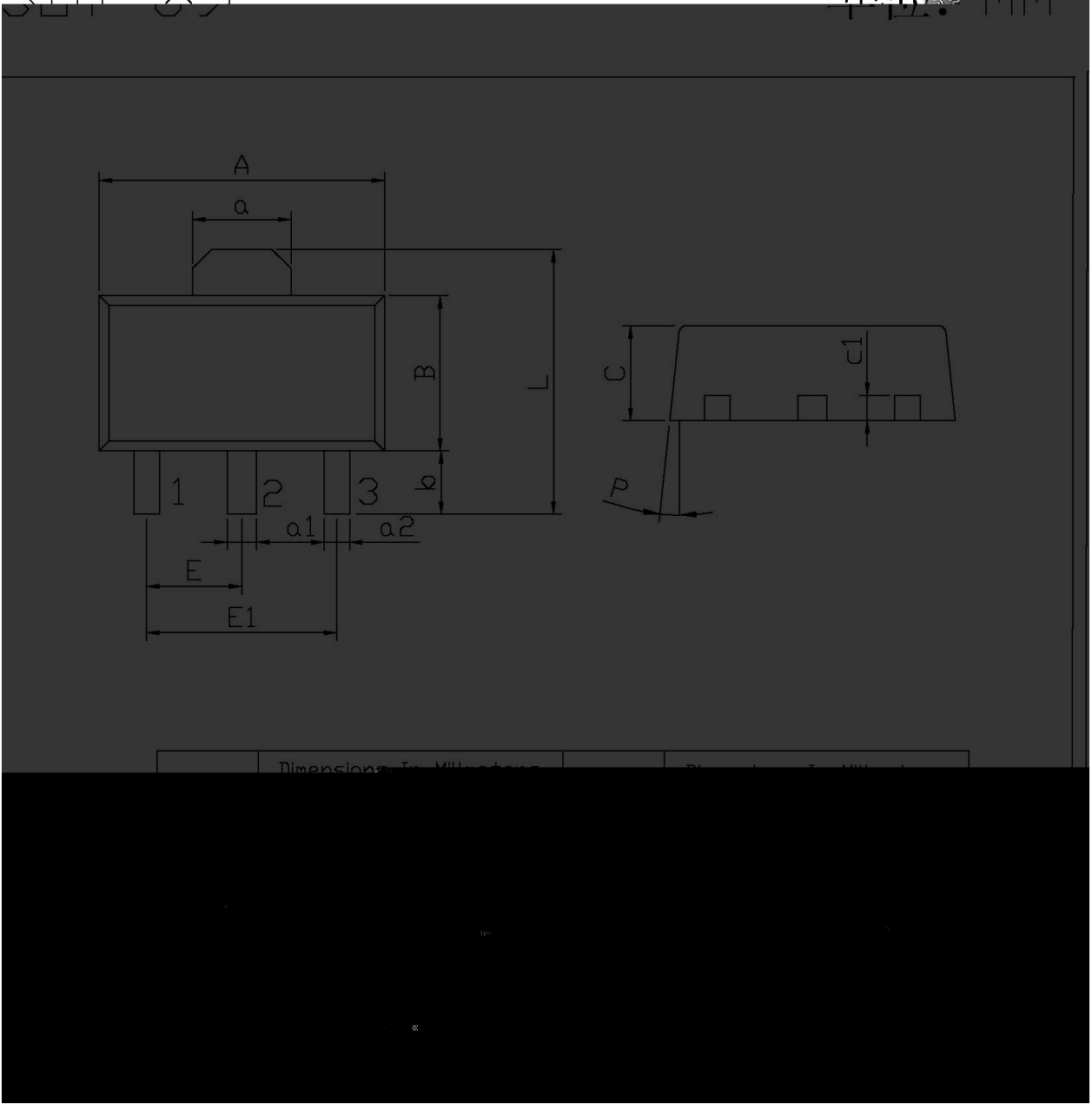
/ Electrical Characteristic Curve



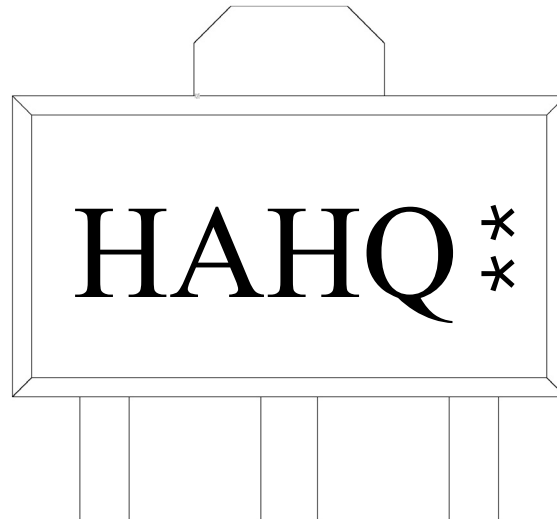
/ Package Dimensions

SOT-89

单位: mm

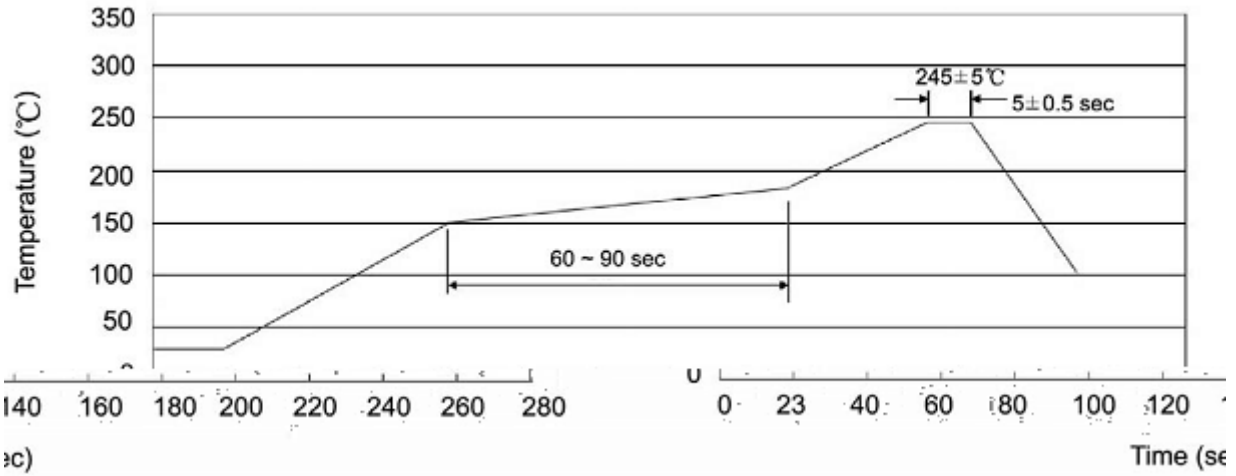


/ Marking Instructions



**

() /



± ± ± ±

/ Resistance to Soldering Heat Test Conditions

± ±

/ Packaging SPEC.

封装形式	包装数量					包装尺寸		
	Units/Reel 只/卷盘	Reels/Inner Box 卷盘/盒	Units/Inner Box 只/盒	Inner Boxes/Outer Box 盒/箱	Units/Outer Box 只/箱	Reel	Inner Box 盒	Outer Box 箱
SOT-89	1,000	7	7,000	8	56,000	7 ×12	180×120×180	385×257×392

/ Notices