

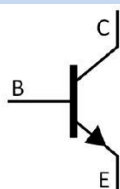
/ Descriptions

SOT-23 NPN

/ Features

/ Applications

/ Equivalent Circuit



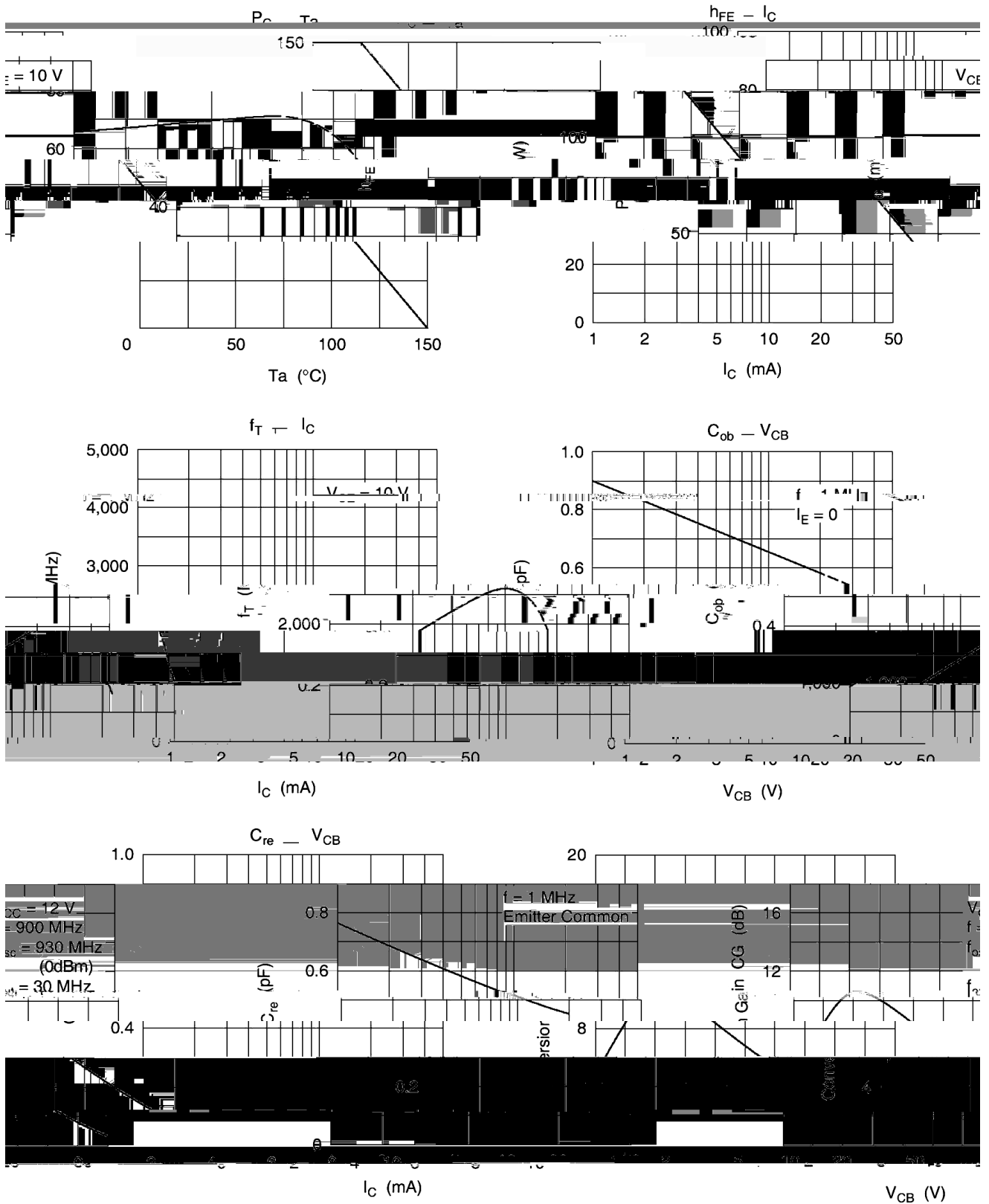
/ Pinning



/ h_{FE} Classifications & Marking

	~

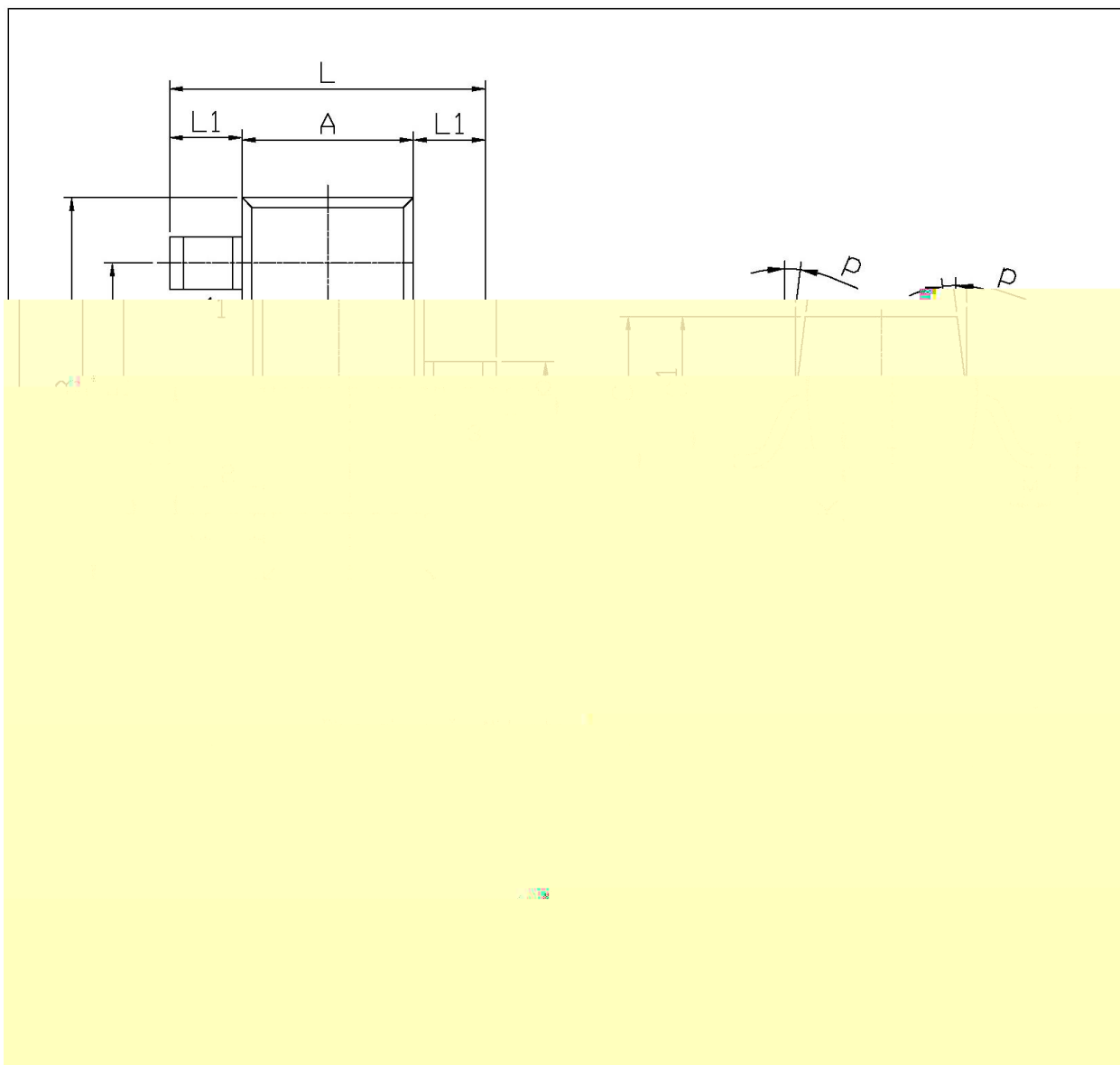
/ Electrical Characteristic Curve



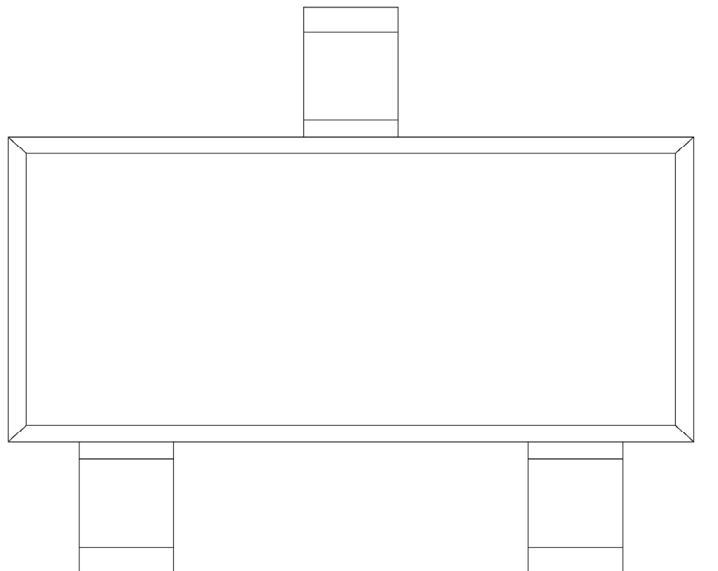
/ Package Dimensions

SOT-23

单位: mm



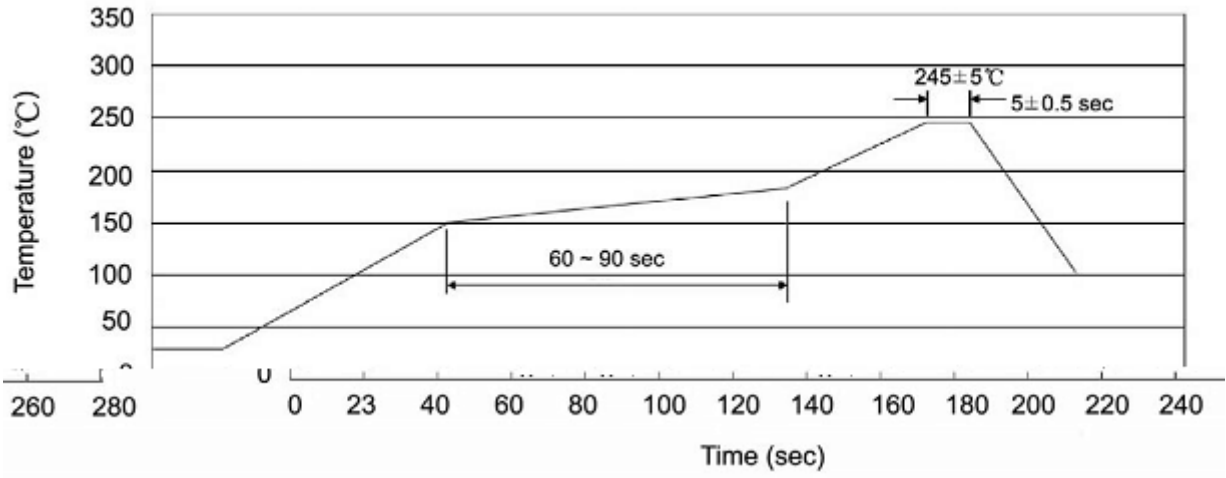
/ Marking Instructions



H
TC

H
TC

() /



± ± ± ±

/ Resistance to Soldering Heat Test Conditions

°C °C

/ Packaging SPEC.

	包装数量	包装尺寸 :
--	------	--------