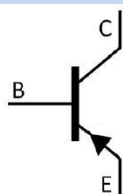


/ Descriptions

/ Features

/ Applications

/ Equivalent Circuit



/ Pinning



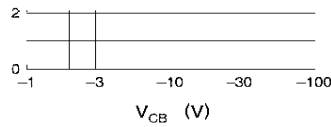
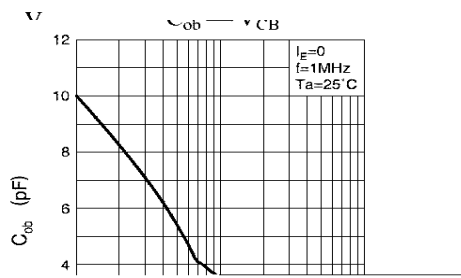
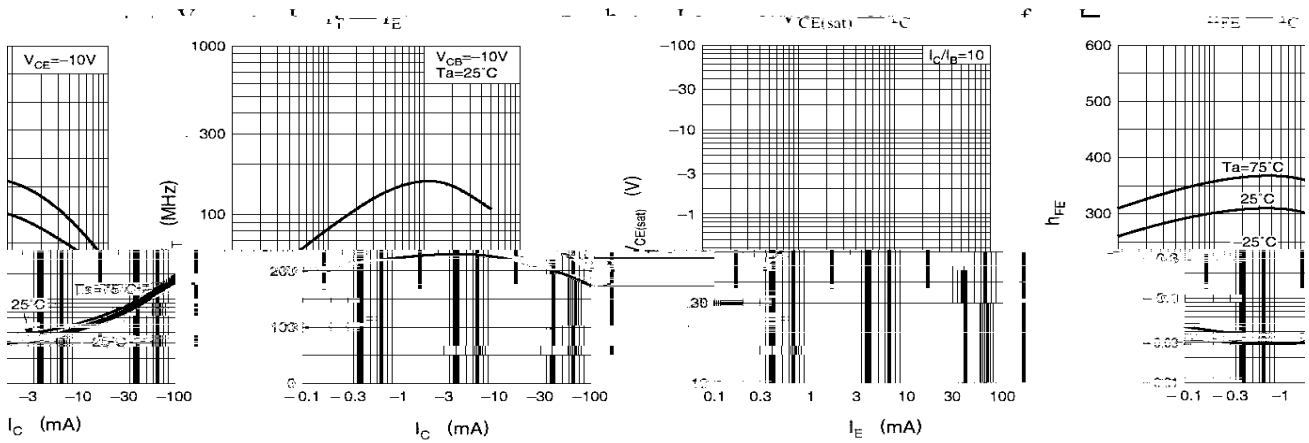
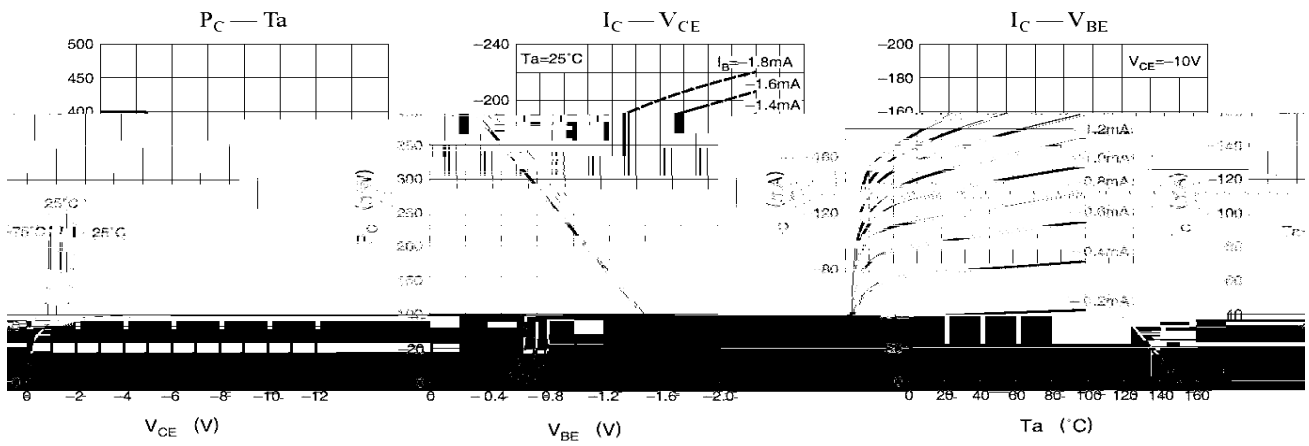
/ hFE Classifications & Marking


**/ Absolute Maximum Ratings(Ta=25 )**

			°C
			°C

**/ Electrical Characteristics(Ta=25 )**

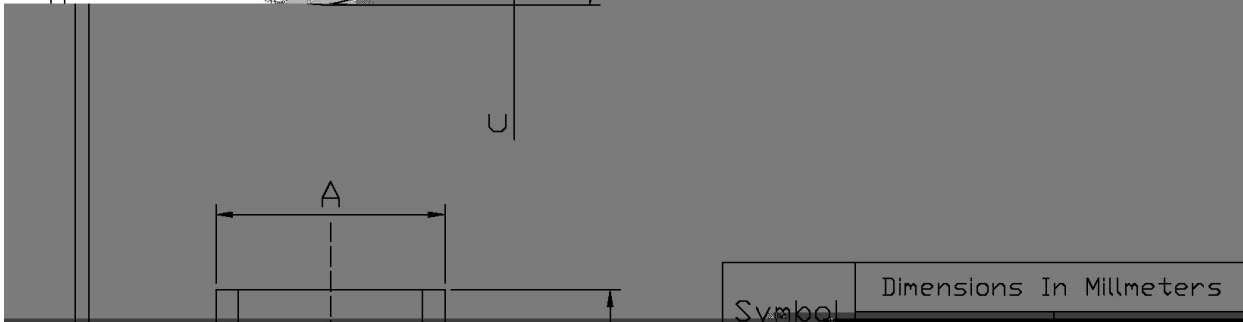
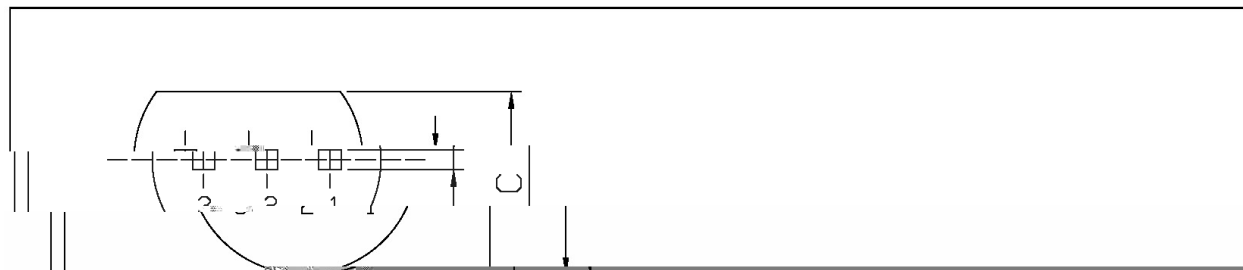

/ Electrical Characteristic Curve



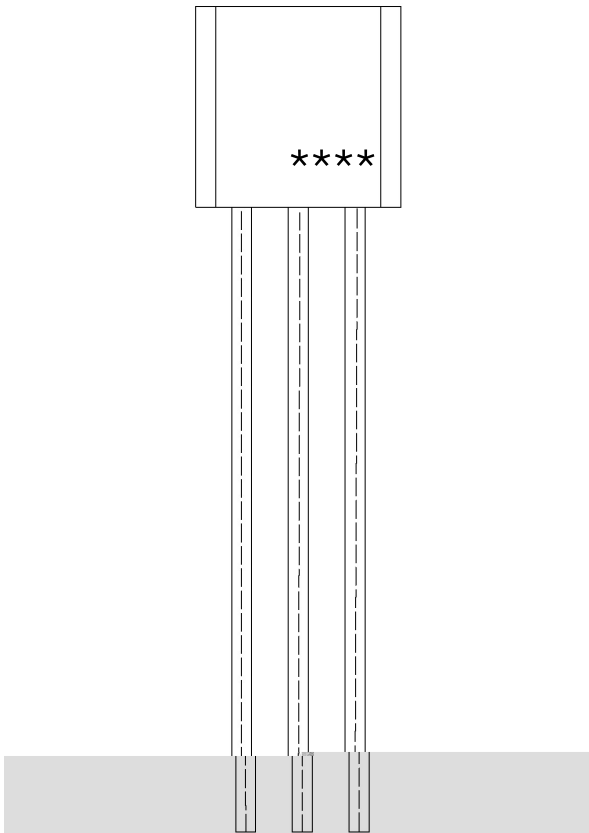
/ Package Dimensions

TO-92

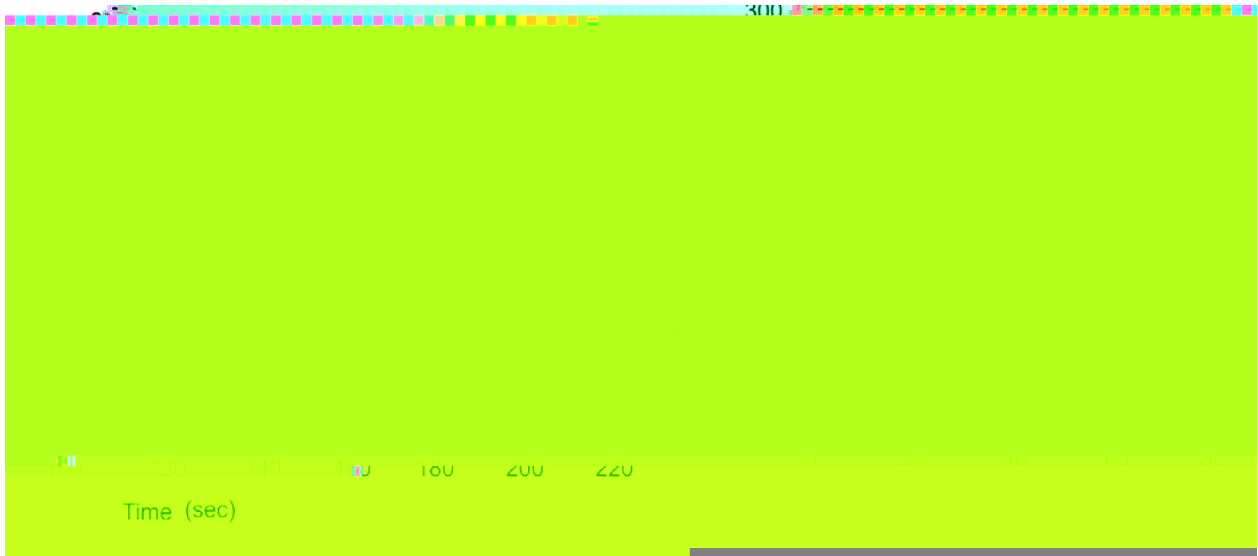
Unit: mm



/ Marking Instructions



( ) / Temperature Profile for Dip Soldering(Pb-Free)



/ Resistance to Soldering Heat Test Conditions

°C

/ Packaging SPEC.

封装形式	包装数量					包装尺寸 :		
	Units/Bag 只/袋	Bags/Inner Box 袋/盒	Units/Inner Box 只/盒	Inner Boxes/Outer Box 盒/箱	Units/Outer Box 只/箱	Bag 袋	Inner Box 盒	Outer Box 箱
TO-92	1,000	10	10,000	5	50,000	135×190	237×172×102	560×245×195
	1,000	10	10,000	10	100,000	135×190	237×172×102	560×245×375

封装形式	包装数量			包装尺寸 :
	Units/tape 只/纸带	Tape/Inner Box 纸带/盒	Rows/Inner Box 纸带	