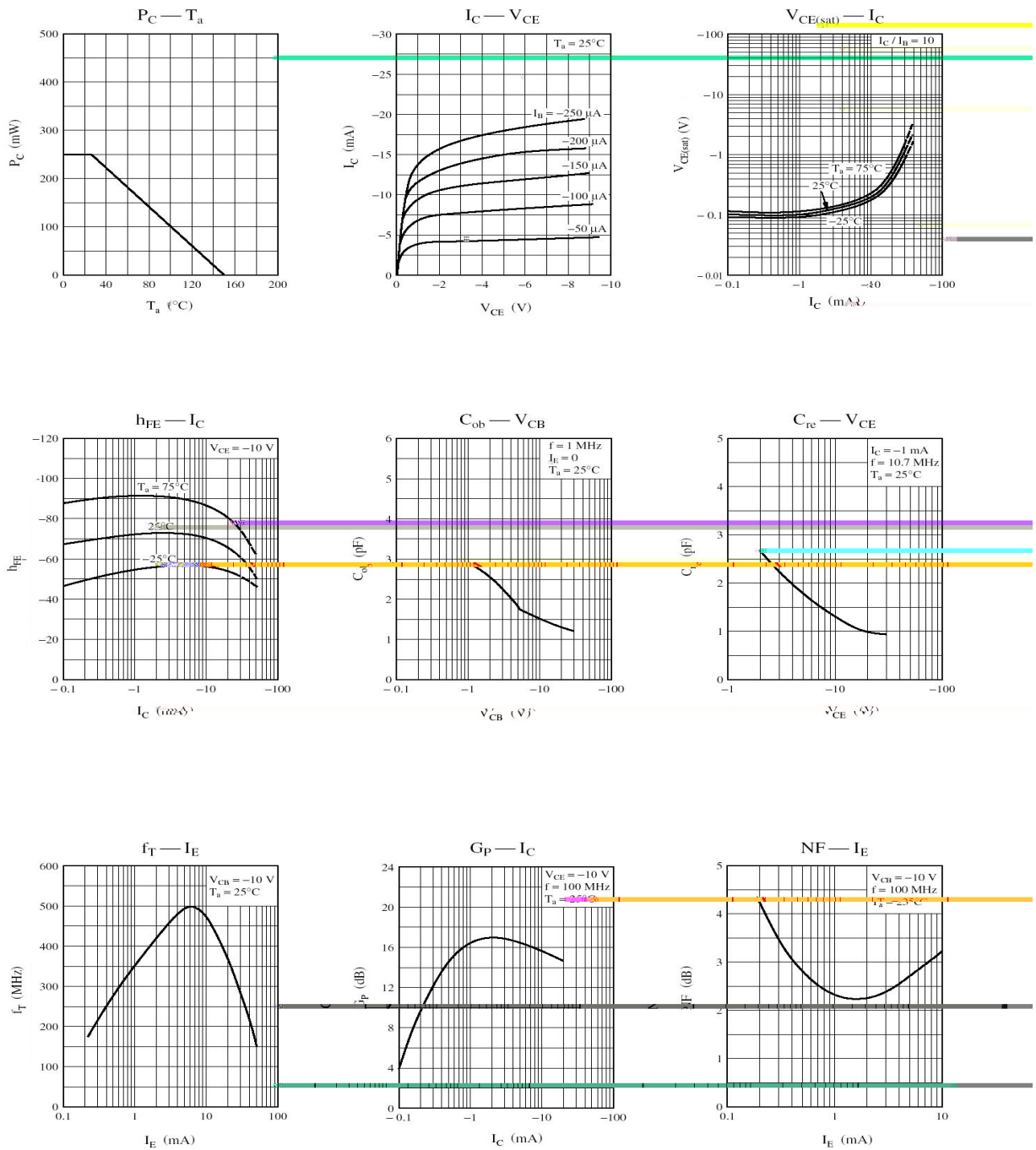


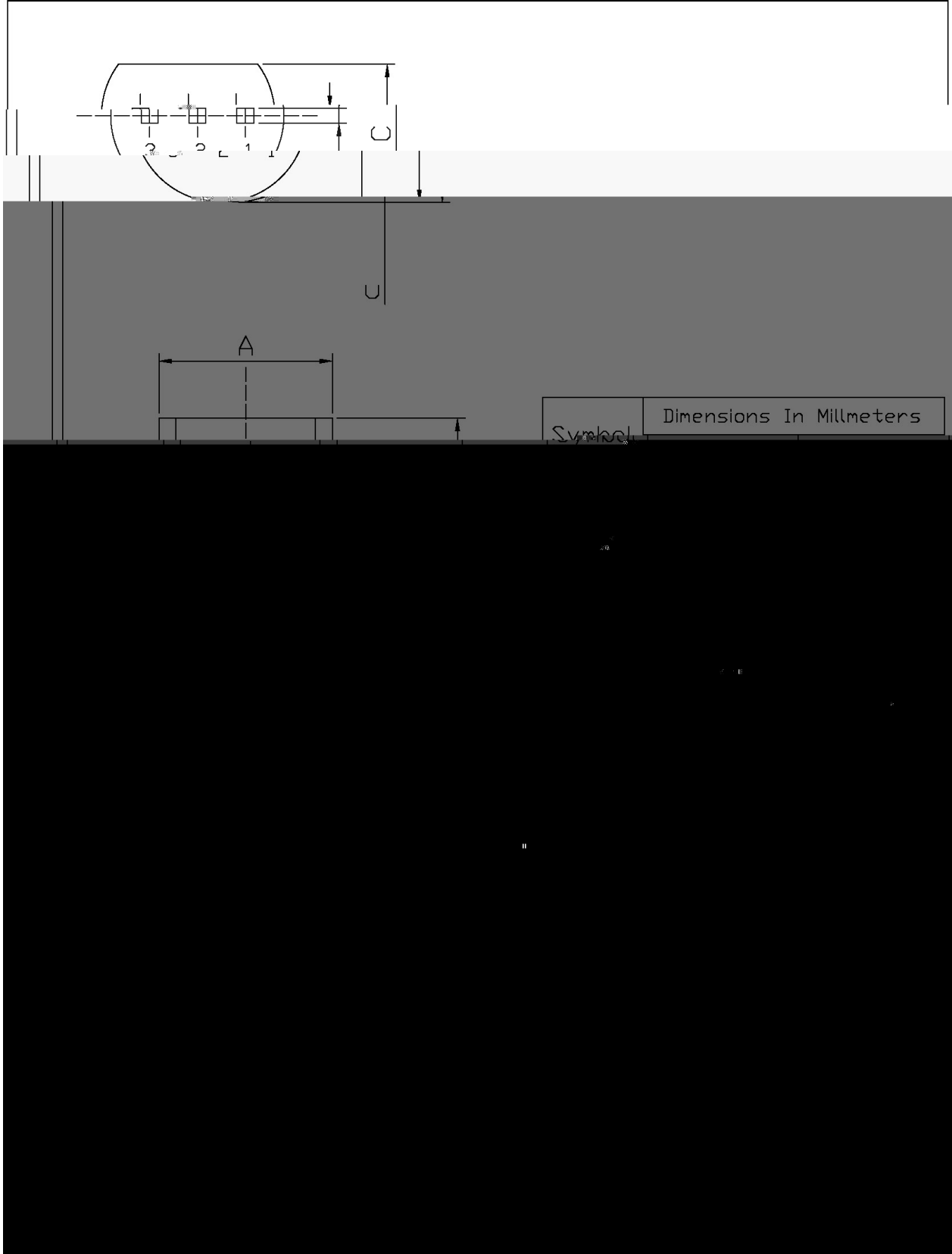
Parameter	Symbol	Rating	Unit
Collector to Base Voltage	V_{CBO}	-30	V
Collector to Emitter Voltage	V_{CEO}	-20	V
Emitter to Base Voltage	V_{EBO}	-5.0	V
Collector Current - Continuous	I_C	-30	mA
Collector Power Dissipation	P_C	250	mW
Junction Temperature	T_j	150	
Storage Temperature Range	T_{stg}	-55 150	

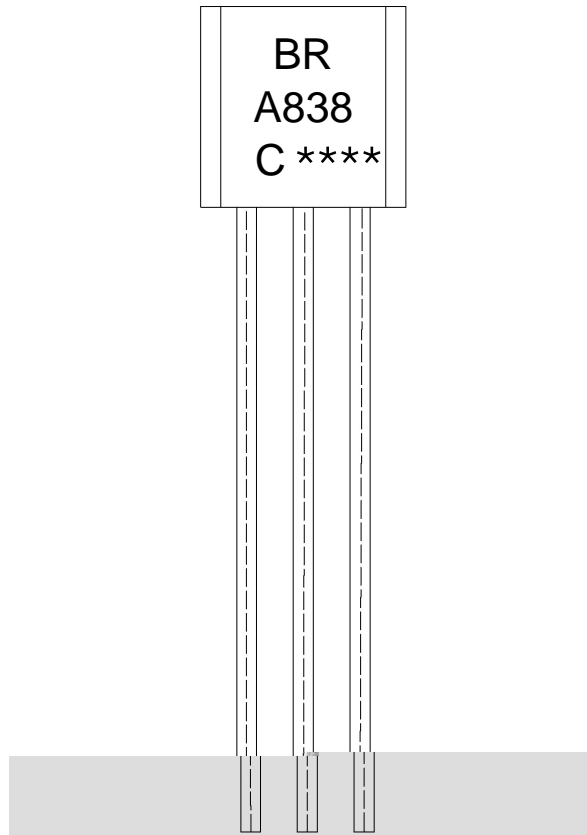
Parameter	Symbol	Test Conditions	Min	Typ	Max	Unit
Collector Cut-Off Current	I_{CBO}	$V_{CB}=-10V$ $I_E=0$			-0.1	A
Collector Cut-Off Current	I_{CEO}	$V_{CE}=-20V$ $I_B=0$			-100	A
Emitter Cut-Off Current	I_{EBO}	$V_{EB}=-5.0V$ $I_C=0$			-10	A
DC Current Gain	h_{FE}	$V_{CE}=-10V$ $I_C=-1.0mA$	70		220	
Collector to Emitter Saturation Voltage	$V_{CE(sat)}$	$I_C=-10mA$ $I_B=-1.0mA$		-0.1		V
Base to Emitter Voltage	V_{BE}	$V_{CE}=-10V$ $I_C=-1.0mA$		-0.7		V
Transition Frequency	f_T	$V_{CB}=-10V$ $I_E=1.0mA$ $f=200MHz$	150	300		MHz
Noise Figure	NF	$V_{CB}=-10V$ $I_E=1.0mA$ $f=5.0MHz$		2.8	4.0	dB
Reverse Transfer Impedance	Z_{rb}	$V_{CE}=-10V$ $I_C=-1.0mA$ $f=2.0MHz$		22	50	
Reverse Transfer Capacitance	C_{re}	$V_{CE}=-10V$ $I_C=-1.0mA$ $f=10.7MHz$		1.2	2.0	pF



T0-92

Unit: mm





BR:

A838

C:

h_{FE}

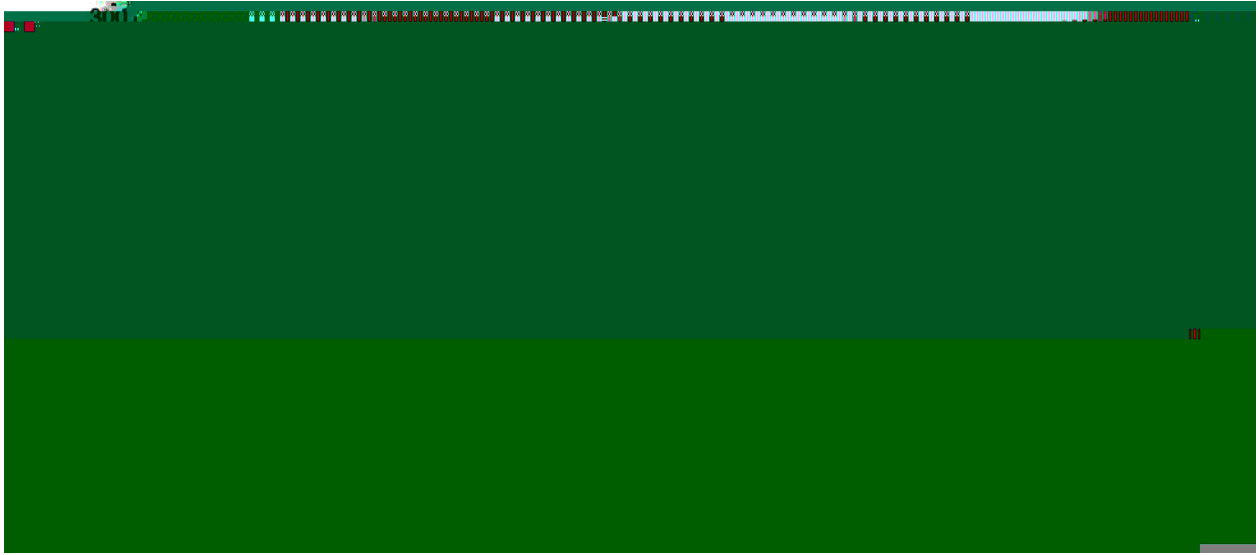
Note:

BR: Company Code.

A838: Product Type.

C: h_{FE} Classifications Symbol

****: Lot No. Code,code change with Lot No.


Note:

- | | | | |
|---|--------|-----------|---|
| 1 | 25 150 | 60 90sec; | 1.Preheating:25~150 , Time:60~90sec. |
| 2 | 255±5 | 5±0.5sec; | 2.Peak Temp.:255±5 , Duration:5±0.5sec. |
| 3 | 2 10 | /sec. | 3. Cooling Speed: 2~10 /sec. |

270±5

10±1 sec.

Temp:270±5

Time:10±1 sec

/ BULK

Package Type 封装形式	Units 包装数量					Dimension 包装尺寸 (unit: mm3)		
	Units/Bag 只/袋	Bags/Inner Box 袋/盒	Units/Inner Box 只/盒	Inner Boxes/Outer Box 盒/箱	Units/Outer Box 只/箱	Bag 袋	Inner Box 盒	Outer Box 箱
TO-92	1,000	10	10,000	5	50,000	135×190	237×172×102	560×245×195
	1,000	10	10,000	10	100,000	135×190	237×172×102	560×245×375

/ AMMO

Package Type 封装形式	Units 包装数量					Dimension 包装尺寸 (unit: mm3)	
	Units/tape 只/纸带	Tape/Inner Box 纸带/盒	Rows/Inner Box 纸带层/盒	Inner Boxes/Outer Box 盒/箱	Units/Outer Box 只/箱	Inner Box 盒	Outer Box 箱
TO-92	3,000	1	120	10	30,000	328×230×42	小箱 480×346×235, 大箱 547×407×268