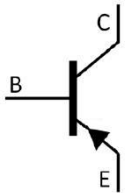


SOT-23          PNP          Silicon PNP transistor in a SOT-23 Plastic Package.

Low saturation voltage, large collector current.

General purpose amplifier and muting switch application.

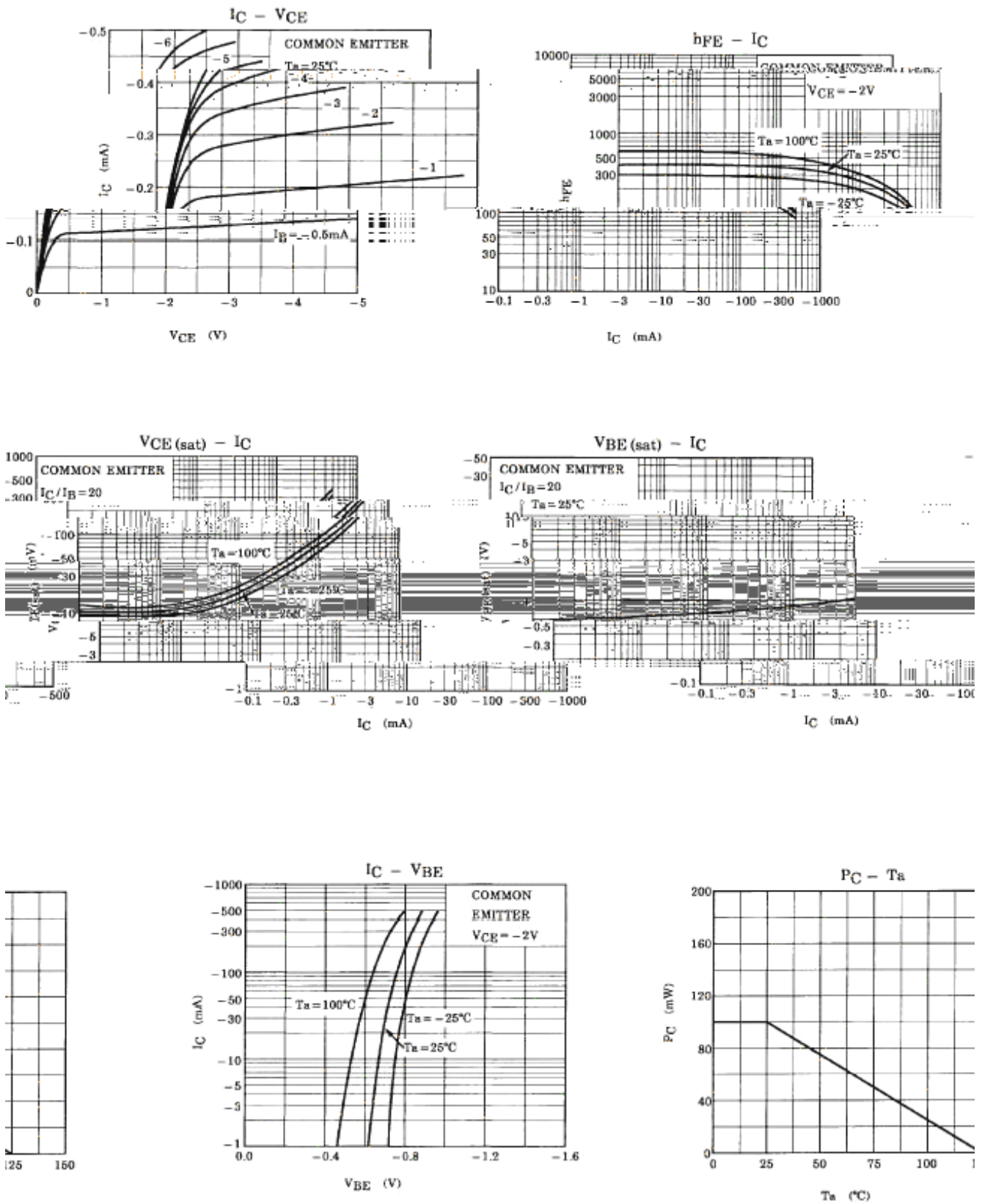


PIN1 Base          PIN 2 Emitter          PIN 3 Collector

$h_{FE}$ Classifications Symbol	A	B
$h_{FE}$ Range	300 600	500 1000
Marking	HGAA	HGAB

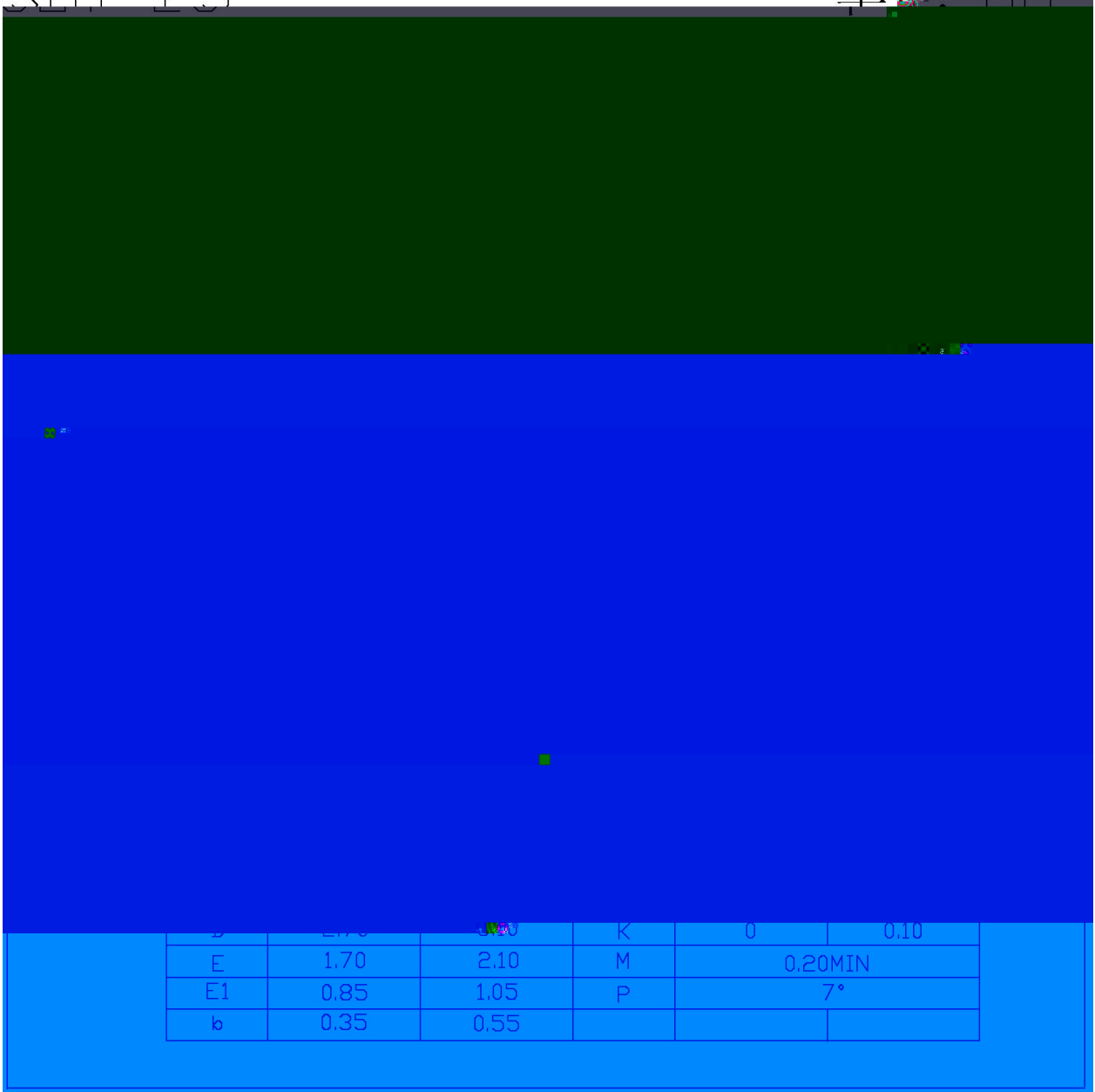
Parameter	Symbol	Rating	Unit
Collector to Base Voltage	$V_{CB0}$	-15	V
Collector to Emitter Voltage	$V_{CEO}$	-12	V
Emitter to Base Voltage	$V_{EBO}$	-5.0	V
Collector Current	$I_C$	-400	mA
Base Current	$I_B$	-50	mA
Collector Power Dissipation	$P_C$	100	mW
Junction Temperature	$T_j$	150	
Storage Temperature Range	$T_{stg}$	-55 150	

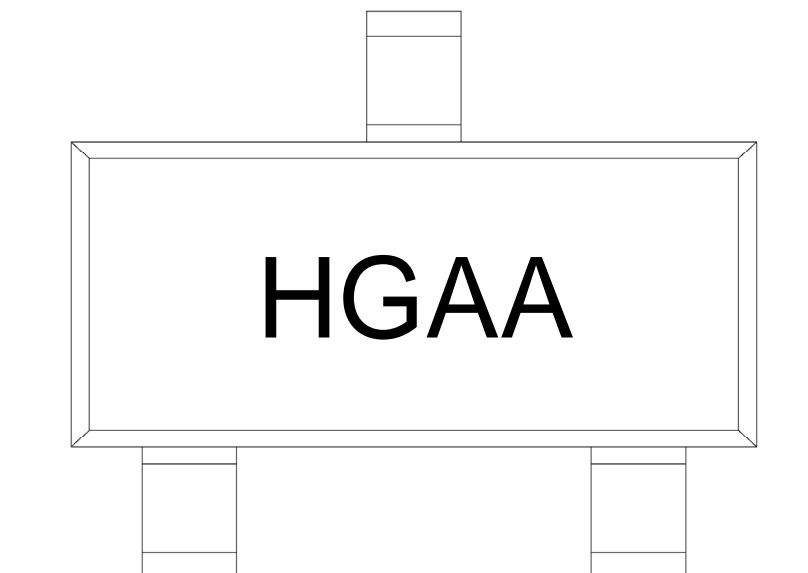
Parameter	Symbol	Test Conditions	Min	Typ	Max	Unit
Collector Cut-Off Current	$I_{CBO}$	$V_{CB}=-15V$ $I_E=0$			-0.1	$\mu A$
Emitter Base Cut-Off Current	$I_{EBO}$	$V_{EB}=-5.0V$ $I_C=0$			-0.1	$\mu A$
DC Current Gain	$h_{FE}$	$V_{CE}=-2.0V$ $I_C=-10mA$	300		1000	
Collector to Emitter Saturation Voltage	$V_{CE(sat)(1)}$	$I_C=-10mA$ $I_B=-0.5mA$		-0.015	-0.03	V
	$V_{CE(sat)(2)}$	$I_C=-200mA$ $I_B=-10mA$		-0.11	-0.25	V
Base to Emitter Saturation Voltage	$V_{BE(sat)}$	$I_C=-200mA$ $I_B=-10mA$		-0.87	-1.2	V
Transition Frequency	$f_T$	$V_{CE}=-2.0V$ $I_E=-10mA$	80	130		MHz
Collector Output Capacitance	$C_{ob}$	$V_{CB}=-10V$ $I_E=0$ $f=1.0MHz$		4.2		pF
Collector-Emitter On Resistance	$R_{on}$	$I_B=-1.0mA$ $V_{in}=-1.0V$ $V_{rms}f=1KHz$		0.9		$\Omega$
Switching time	Turn-On Time	$t_{on}$	$I_{B1}=-I_{B2}=5.0mA$	40		ns
	Storage Time	$T_{stg}$		280		
	Fall Time	$t_f$		45		



SOT-23

单位: mm





H

GA

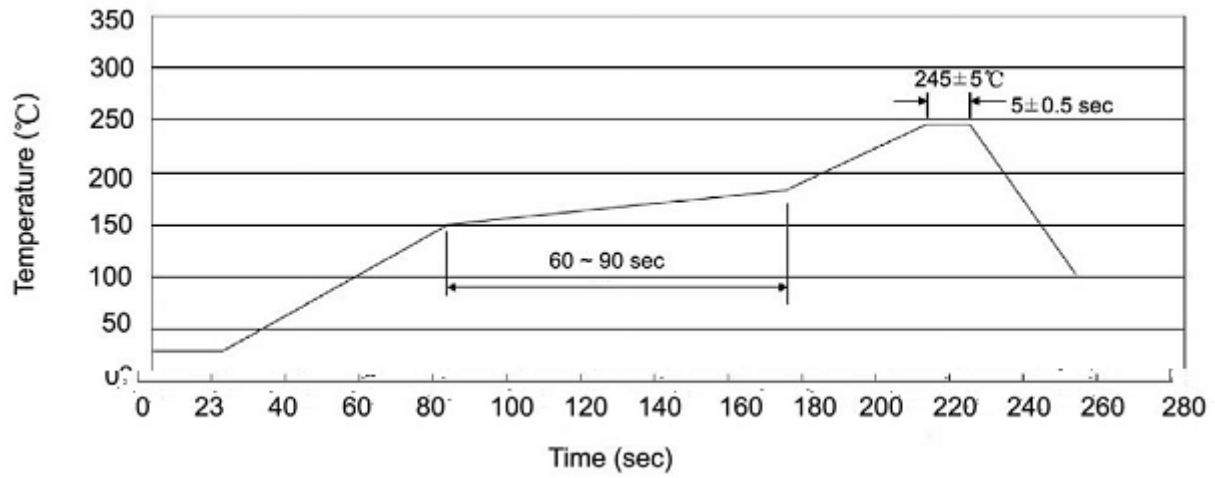
A:  $h_{FE}$

Note:

H: Company Code.

GA: Product Type Code

A:  $h_{FE}$  Classifications Symbol Code



Note:

- |   |       |     |       |        |   |
|---|-------|-----|-------|--------|---|
| 1 | 25    | 150 | 60    | 90sec; | 1.Preheating:25~150 , Time:60~90sec.    |
| 2 | 245±5 |     | 5±0.5 | sec;   | 2.Peak Temp.:245±5 , Duration:5±0.5sec. |
| 3 |       | 2   | 10    | /sec.  | 3. Cooling Speed: 2~10 /sec.            |

260±5

10±1 sec.

Temp.:260±5

Time:10±1 sec

/ REEL

Package Type 封装形式	Units 包装数量					Dimension 包装尺寸 (unit: mm <sup>3</sup> )		
	只卷盘	卷盘盒	只盒	盒箱	只箱	盒		箱