

描述 / Descriptions

SOT-23: ; ; < N = > MOS ? @ A B C N-CHANNEL MOSFET in a SOT-23 Plastic Package.

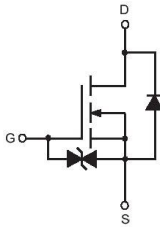
特征 / Features

DEIF! GHI JKLMNI OPJKCQJ RST C O 1 6 7 C
Sensitive gate trigger current and Low Holding current.ESD protected up to 1KV. HF product.

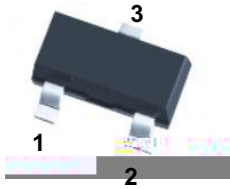
用途 / Applications

UVWXIYZL [\ F ! C
Intended for use in general purpose switching and phase control applications.

内部等效电路 / Equivalent Circuit



引脚排列 / Pinning



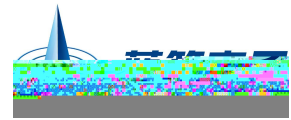
PIN 1] G PIN 2] S PIN 3] D

印章代码 / Marking

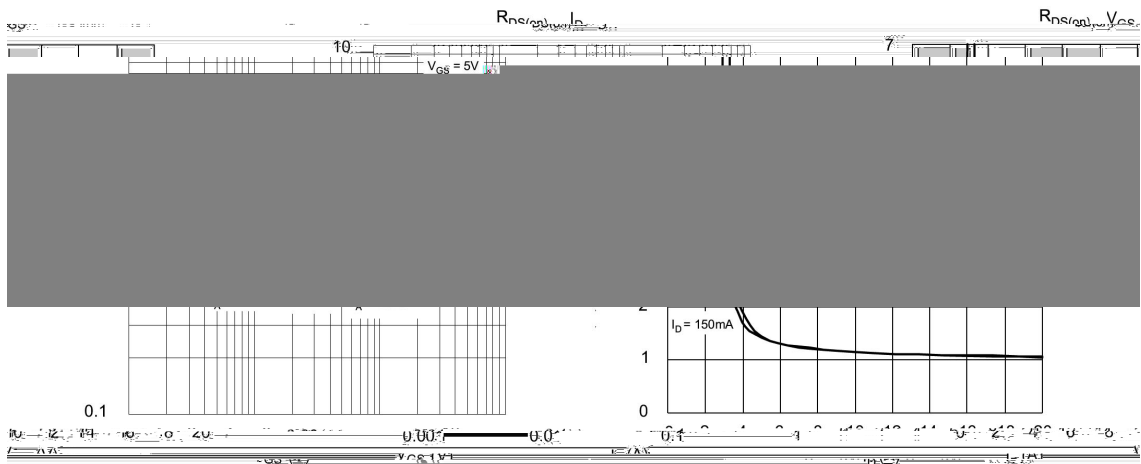
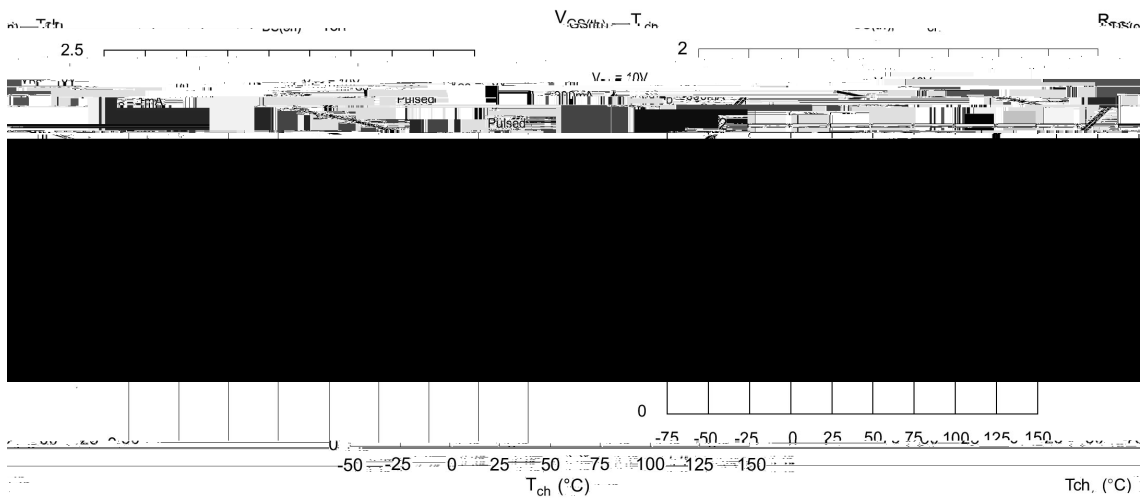
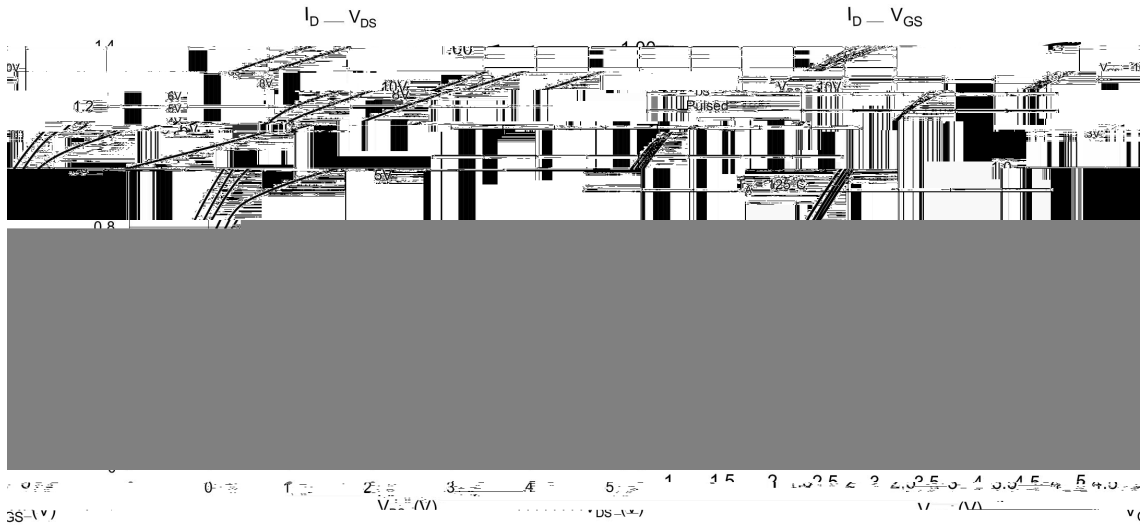
| | |
|---------|------|
| Marking | H702 |
|---------|------|

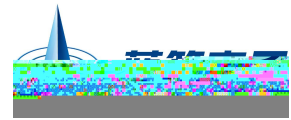
2N7002K1
Rev.I May.-2022

DATA SHEET



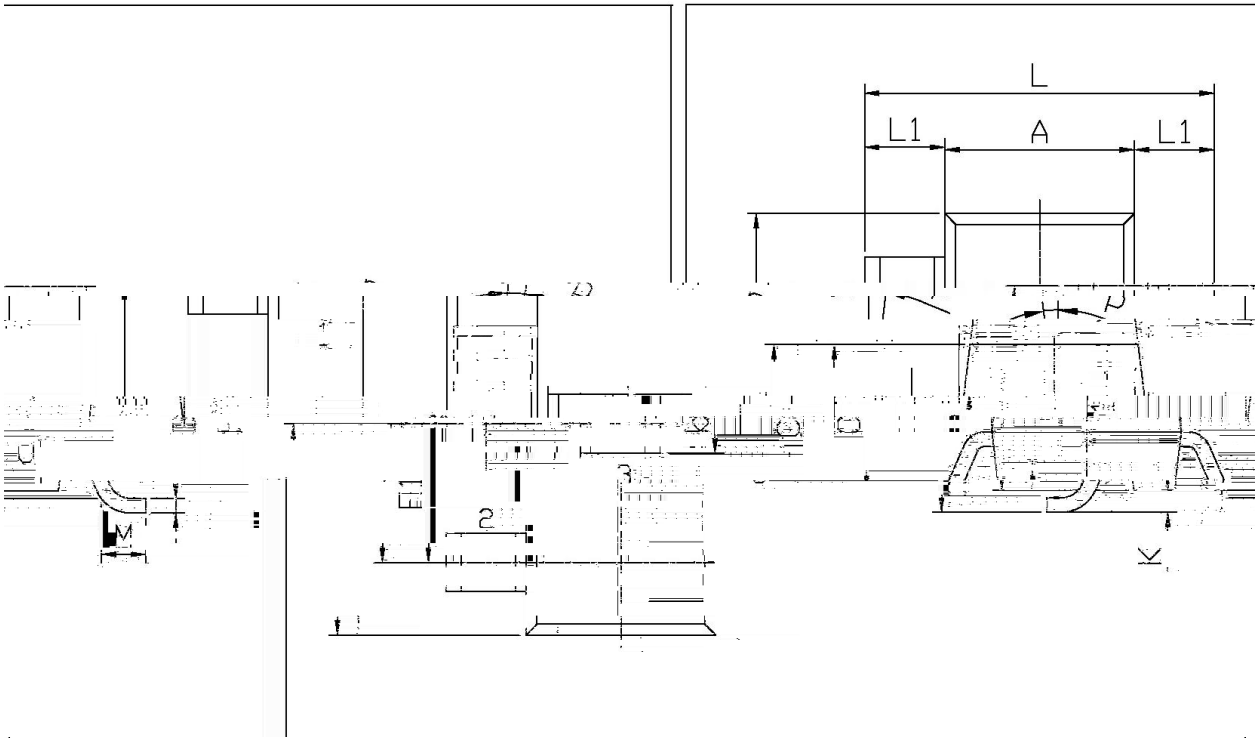
电参数曲线图 / Electrical Characteristic Curve





外形尺寸图 / Package Dimensions

单位: 毫米 (Unit: mm)

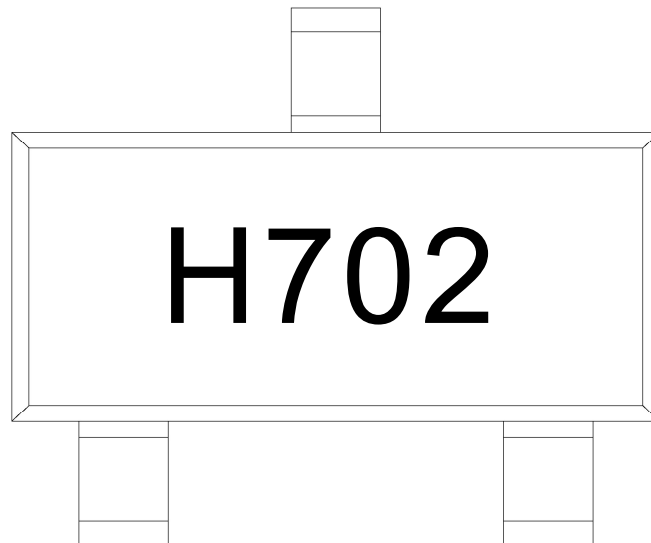


| Symbol | Dimensions In Millimeters | | Symbol | Dimensions In Millimeters | |
|--------|---------------------------|-----|--------|---------------------------|-----|
| | Min | Max | | Min | Max |
| L | 2.2 | 2.7 | C | 1.30Max | |

| | | | | | |
|----|------|------|----|------|------|
| L1 | 0.45 | 0.65 | Cf | 0.90 | 1.20 |
| A | 1.15 | 1.50 | c | 0.05 | 0.20 |
| B | 2.70 | 3.10 | K | 0 | 0.10 |

| | | | | | |
|---|---------|----|---|------|------|
| R | 0.20MIN | 7° | E | 0.85 | 1.05 |
| | | | b | 0.35 | 0.50 |

印章说明 / Marking Instructions



mn]

H] o p q r fi

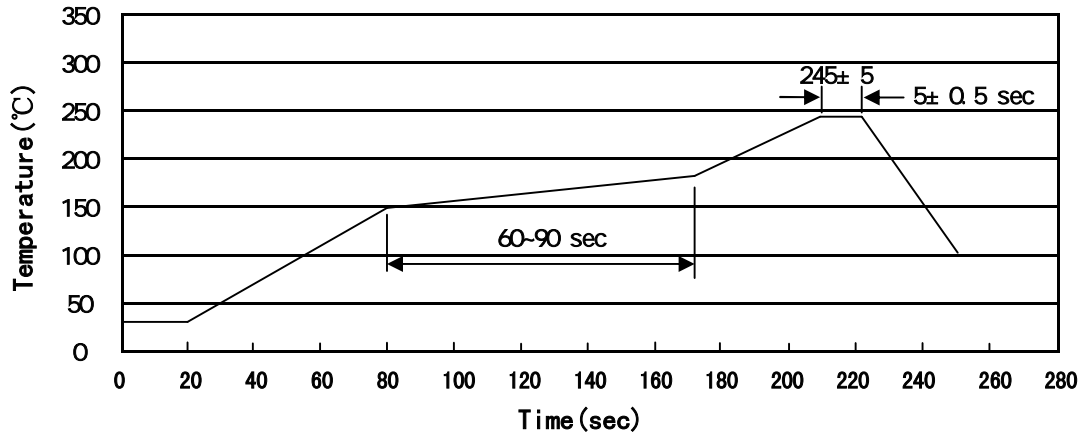
702] o k a r fi

Note:

H: Company Code

702: Product Type

回流焊温度曲线图(无铅) / Temperature Profile for IR Reflow Soldering(Pb-Free)



说明：

- 1、预热温度 150 ~ 180°C，时间 60 ~ 90sec;
- 2、峰值温度 245±5°C，时间持续为 5±0.5sec;
- 3、焊接制程冷却速度为 2 ~ 10°C/sec.

Note:

- 1.Preheating:150~180°C, Time:60~90sec.
- 2.Peak Temp.:245±5°C, Duration:5±0.5sec.
3. Cooling Speed: 2~10°C/sec.

耐焊接热试验条件 / Resistance to Soldering Heat Test Conditions

温度：260±5°C

时间：10±1 sec.

Temp.:260±5°C

Time:10±1 sec

包装规格 / Packaging SPEC.

卷盘包装 / REEL

| Package Type 封装形式 | Units 包装数量 | | | | | Dimension 包装尺寸 (unit: mm ³) | | |
|----------------------|------------|-----|----|----|----|---|---|--|
| | 只卷盘 | 卷盘盒 | 只盒 | 盒箱 | 只箱 | 盒 | 箱 | |
| | | | | | | " | | |

使用说明 / Notices